

| | | | |
|---------------------------|------------------------|--------------------------------|-----------------------|
| LOC I-EPD 111.1 | APP CRS 354° | Rwy Ldg TDZE 9001 28 | Apt Elev 33 |
|---------------------------|------------------------|--------------------------------|-----------------------|

ILS Z or LOC Z RWY 35L

ELLINGTON (EFD)

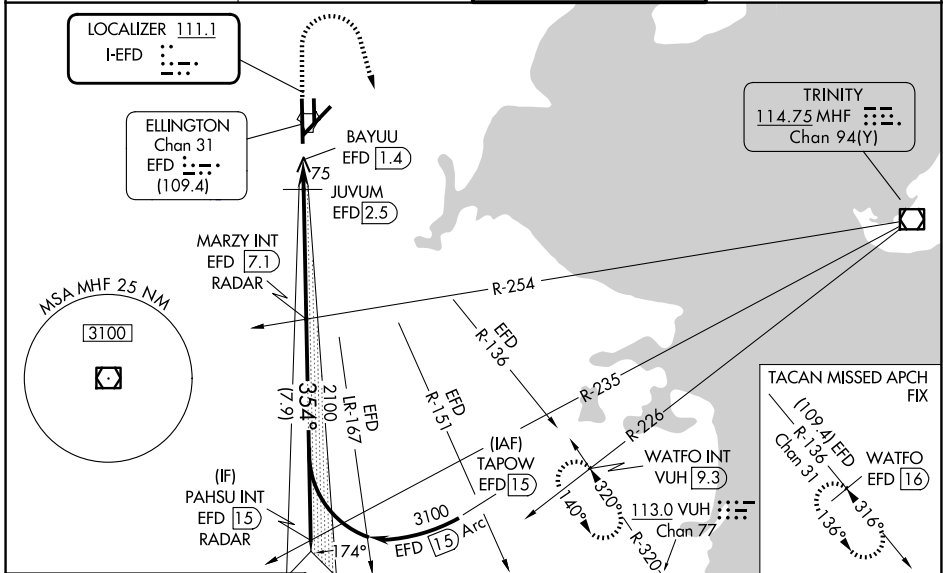
RADAR required for procedure entry.

⚠ Circling NA west of Rwy 17R-35L. DME from EFD TACAN. Simultaneous reception of I-EPD and EFD DME required. Inop table does not apply to S-ILS 35L. For inop ALS, increase S-LOC 35L Cat C/D/E visibility to 1 3/4 SM. For inop ALS when using JUVUM fix minimums, increase S-LOC 35L Cat C/D/E visibility to RVR 6000.

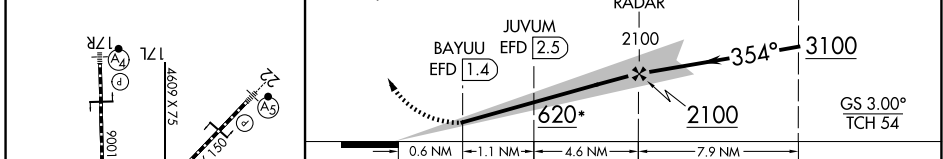
MALSF

MISSED APPROACH: Climb to 700 then dimbing right turn to 3100 on VUH VOR/DME R-320 to WATFO INT/VUH 9.3 DME and hold. (TACAN aircraft climb to 700 then dimbing right turn to 3100 on EFD TACAN R-136 to WATFO/EFD 1.6 DME and hold southeast, left turn, 316° inbound).

| | | | |
|------------------------------|--|--|-------------------------------|
| ATIS 135.575 269.9 | HOUSTON APP CON 134.45 284.0 | ELLINGTON TOWER 126.05 253.5 | GND CON 121.6 275.8 |
|------------------------------|--|--|-------------------------------|



| | | | | | |
|--|------------------|------------|---|-------------------|------------------|
| ELEV 33 | D TDZE 28 | 700 3100 | VGSI and ILS glidepath not coincident (VGSI Angle 3.00/TCH 32). | WATFO INT | PAHSU INT EFD 15 |
| HIRL Rwy 4-22 and 17R-35L TDZ/CL Rwy 17R, 22 and 35L | | *LOC only. | | MARZY INT EFD 7.1 | |



| CATEGORY | A | B | C | D | E |
|-----------------------------------|----------------------|---------------|-----------------|-------------|-----------------|
| S-ILS 35L | 228/40 200 (200-3/4) | | | | |
| S-LOC 35L | 620/40 | 592 (600-3/4) | 620-1 3/8 | | 592 (600-1 3/8) |
| CIRCLING | 620-1 | 587 (600-1) | 620-1 3/4 | 640-2 | 700-2 1/4 |
| | | | 587 (600-1 3/4) | 607 (700-2) | 667 (700-2 1/4) |
| JUVUM FIX MINIMUMS (DME REQUIRED) | | | | | |
| S-LOC 35L | 440/40 | 412 (500-3/4) | 440/50 | | 412 (500-1) |
| CIRCLING | 500-1 | 467 (500-1) | 580-1 1/2 | 640-2 | 700-2 1/4 |
| | | | 547 (600-1 1/2) | 607 (700-2) | 667 (700-2 1/4) |

FAF to MAP 5.7 NM

| | | | | | |
|---------|------|------|------|------|------|
| Knots | 60 | 90 | 120 | 150 | 180 |
| Min:Sec | 5:42 | 3:48 | 2:51 | 2:17 | 1:54 |

SC-5, 16 APR 2026 to 14 MAY 2026

SC-5, 16 APR 2026 to 14 MAY 2026