

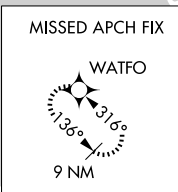
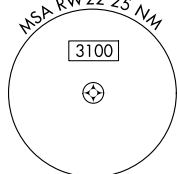
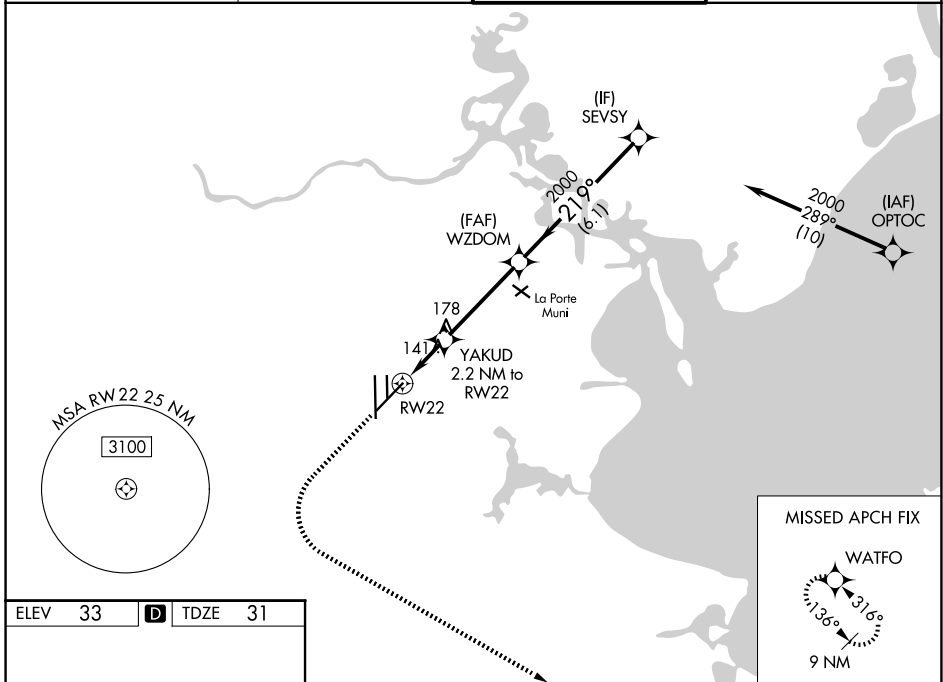
WAAS CH <b>61111</b> <b>W22A</b>	APP CRS <b>219°</b>	Rwy Ldg <b>8001</b> TDZE <b>31</b> Apt Elev <b>33</b>
--	------------------------	---

# RNAV (GPS) RWY 22

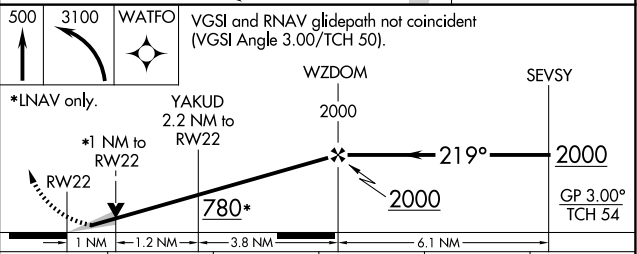
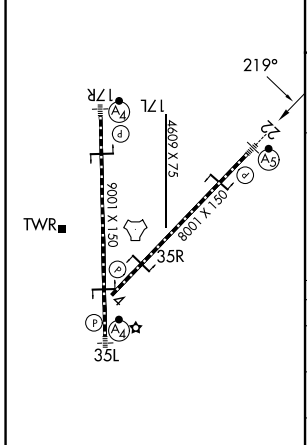
ELLINGTON (EFD)

RNP APCH.	MALSRL	MISSED APPROACH: Climb to 500 then climbing left turn to 3100 direct WATFO and hold.
<p><b>⚠</b> Circling NA west of Rwy 17R - 35L. For uncompensated Baro-VNAV systems, LNAV/VNAV NA below -1.5°C or above 54°C. For inop ALS, increase LPV Cat E visibility to RVR 4000, LNAV/VNAV all Cats visibility to RVR 4500, and LNAV Cats C/D/E visibility to RVR 5500.</p>		

ATIS <b>135.575 269.9</b>	HOUSTON APP CON <b>134.45 284.0</b>	ELLINGTON TOWER <b>126.05 253.5</b>	GND CON <b>121.6 275.8</b>
------------------------------	--	--	-------------------------------



ELEV 33	<b>D</b>	TDZE 31
---------	----------	---------



CATEGORY	A	B	C	D	E
LPV	DA	231/18		200 (200-1/2)	
LNAV/VNAV	DA	341/24		310 (400-1/2)	
LNAV MDA	400/24	369 (400-1/2)		400/35 369 (400-3/4)	
CIRCLING	500-1	467 (500-1)	580-1 1/2 547 (600-1 1/2)	640-2 607 (700-2)	700-2 1/4 667 (700-2 1/4)

HIRL Rwy 4-22 and 17R-35L  
TDZ/CL Rwy 17R, 22 and 35L

SC-5, 16 APR 2026 to 14 MAY 2026

SC-5, 16 APR 2026 to 14 MAY 2026