

(STYCK8.STYCK) 21280

AL-197 (FAA)

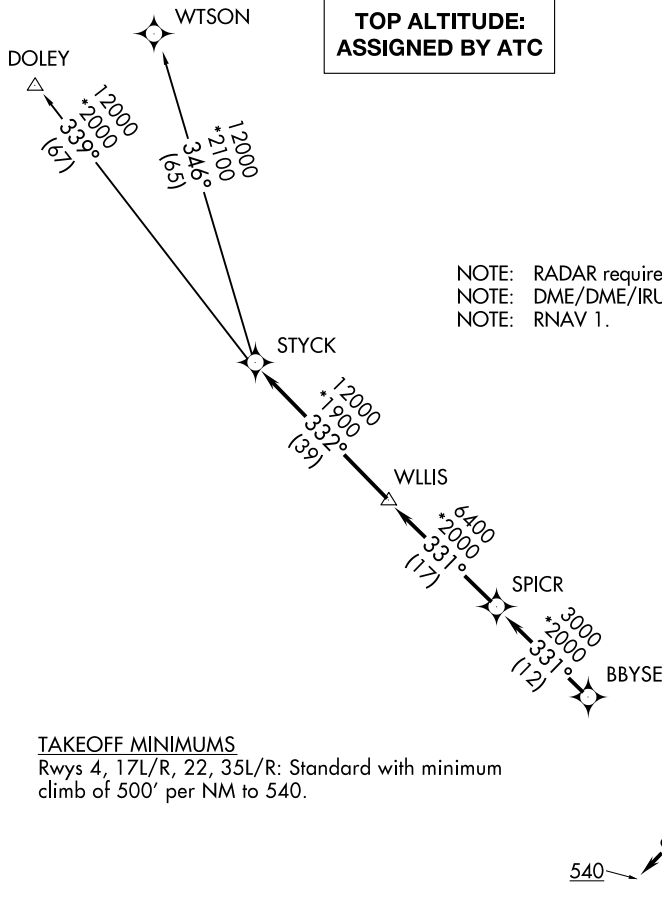
ELLINGTON (EFD)

STYCK EIGHT DEPARTURE (RNAV)

HOUSTON, TEXAS

**TOP ALTITUDE:
ASSIGNED BY ATC**

ATIS
135.575 269.9
GND CON
121.6 275.8
ELLINGTON TOWER
126.05 253.5
HOUSTON DEP CON
134.45 284.0



NOTE: RADAR required.
NOTE: DME/DME/IRU or GPS required.
NOTE: RNAV 1.

TAKEOFF MINIMUMS

Rwys 4, 17L/R, 22, 35L/R: Standard with minimum climb of 500' per NM to 540.

NOTE: Chart not to scale.



DEPARTURE ROUTE DESCRIPTION

TAKEOFF RUNWAY 4: Climb on heading 039° to 540 for RADAR vectors to BBYSE, thence. . .

TAKEOFF RUNWAYS 17L/R: Climb on heading 174° to 540 for RADAR vectors to BBYSE, thence. . .

TAKEOFF RUNWAY 22: Climb on heading 219° to 540 for RADAR vectors to BBYSE, thence. . .

TAKEOFF RUNWAYS 35L/R: Climb on heading 354° to 540 for RADAR vectors to BBYSE, thence. . .

. . . on track 331° to SPICR, then on track 331° to WLLIS, then on track 332° to STYCK, then on (transition). Maintain ATC assigned altitude. Expect filed altitude 10 minutes after departure.

DOLEY TRANSITION (STYCK8.DOLEY)

WTSON TRANSITION (STYCK8.WTSON)

STYCK EIGHT DEPARTURE (RNAV)

(STYCK8.STYCK) 07OCT21

HOUSTON, TEXAS
ELLINGTON (EFD)

SC-5, 16 APR 2026 to 14 MAY 2026

SC-5, 16 APR 2026 to 14 MAY 2026