

(CESAN, CESAN4) 22JUN17

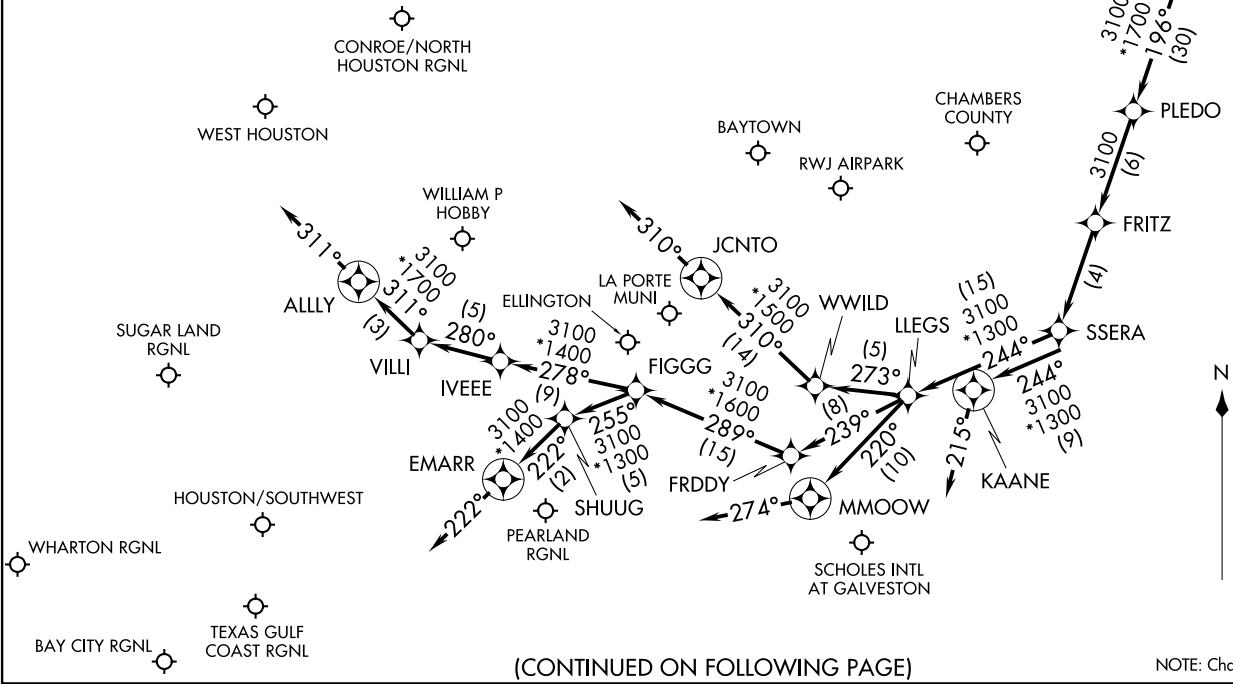
CESAN FOUR ARRIVAL (RNAV)

HOUSTON, TEXAS

HOUSTON APP CON
121.3 377.1
CXO ATIS
118.325
EFD ATIS
135.575 269.9
HOU D-ATIS
124.6
SGR ATIS
118.125

NOTE: RADAR required.
NOTE: RNAV 1.
NOTE: DME/DME/IRU or GPS required.
NOTE: DME/DME/IRU or GPS equipped Turbojet and Turboprop aircraft capable of 280K or greater must file the WAAPL (RNAV) STAR.

CESAN
VERTICAL NAVIGATION
PLANNING INFORMATION
Expect 11000



(CONTINUED ON FOLLOWING PAGE)

(CESAN, CESAN4) 25051

CESAN FOUR ARRIVAL (RNAV)

HOUSTON, TEXAS

AI-198 (FAA)

CESAN FOUR ARRIVAL (RNAV)

ARRIVAL ROUTE DESCRIPTION

From CESAN on track 185° to CREPO, then on track 196° to PLEDO.

LANDING HOU RWYS 13L/R: From PLEDO on track 196° to FRITZ, then on track 196° to SSERA, then on track 244° to LLEGS, then on track 239° to FRDDY, then on track 289° to FIGGG, then on track 278° to IVEEE, then on track 280° to VILLI, then on track 311° to ALLY, then on track 311°. Expect vectors to final approach course.

LANDING HOU RWY 4: From PLEDO on track 196° to FRITZ, then on track 196° to SSERA, then on track 244° to LLEGS, then on track 239° to FRDDY, then on track 289° to FIGGG, then on track 255° to SHUUG, then on track 222° to EMARR, then on track 222°. Expect vectors to approach course.

LANDING HOU RWY 22: From PLEDO on track 196° to FRITZ, then on track 196° to SSERA, then on track 244° to LLEGS, then on track 273° to WWILD, then on track 310° to JCNT0, then on track 310°. Expect vectors to final approach course.

LANDING HOU RWYS 31L/R: From PLEDO on track 196° to FRITZ, then on track 196° to SSERA, then on track 244° to LLEGS, then on track 220° to MMOOW, then on track 274°. Expect vectors to final approach course.

ALL OTHER AIRPORTS: From CESAN on track 185° to CREPO, then on track 196° to PLEDO, then on track 196° to FRITZ, then on track 196° to SSERA, then on track 244° to KAANE, then on track 215°. Expect vectors to final approach course.

SC-5, 16 APR 2026 to 14 MAY 2026

SC-5, 16 APR 2026 to 14 MAY 2026