

# CRIED ONE DEPARTURE

AL-198 (FAA)

WILLIAM P HOBBY (HOU)  
HOUSTON, TEXAS

D-ATIS  
124.6  
CLNC DEL  
125.45  
CPDLC  
GND CON  
121.9  
HOBBY TOWER  
118.7 256.9  
HOUSTON DEP CON  
132.25 285.425

**TOP ALTITUDE:  
16000**

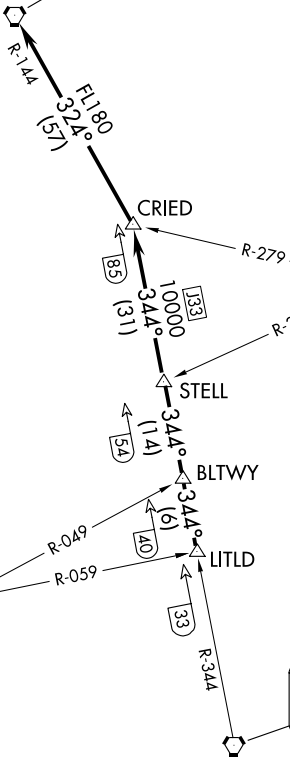
CEDAR CREEK  
114.8 CQY   
Chan 95

LUFKIN  
112.1 LFK   
Chan 58

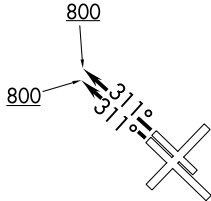
NAVASOTA  
115.9 TNV   
Chan 106

HUMBLE  
116.6 IAH   
Chan 113

NOTE: RADAR required.



**TAKEOFF MINIMUMS**  
Rwys 4, 13L/R, 31L/R: Standard.  
Rwy 22: Standard with minimum climb of 290' per NM to 1500.



SC-5, 16 APR 2026 to 14 MAY 2026

SC-5, 16 APR 2026 to 14 MAY 2026

(CONTINUED ON FOLLOWING PAGE)

NOTE: Chart not to scale.

# CRIED ONE DEPARTURE

# CRIED ONE DEPARTURE

AL-198 (FAA)



## DEPARTURE ROUTE DESCRIPTION

TAKEOFF RUNWAYS 4, 13L/R, 22: Climb on assigned heading for RADAR vectors to LITLD INT, maintain 16000. Expect filed altitude 10 minutes after departure, thence . . . .

TAKEOFF RUNWAYS 31L/R: Climb on heading 311° to 800 before turning, then climb on assigned heading for RADAR vectors to LITLD INT, maintain 16000. Expect filed altitude 10 minutes after departure, thence . . . .

. . . . on IAH R-344 to STELL INT, then on IAH R-344 to CRIED INT, then left turn on CQY R-144 to CQY VORTAC.

SC-5, 16 APR 2026 to 14 MAY 2026

SC-5, 16 APR 2026 to 14 MAY 2026