

EL DORADO ONE DEPARTURE

D-ATIS
124.6
CLNC DEL
125.45
CPDLC
GND CON
121.9
HOBBY TOWER
118.7 256.9
HOUSTON DEP CON
132.25 285.425

**TOP ALTITUDE:
16000**

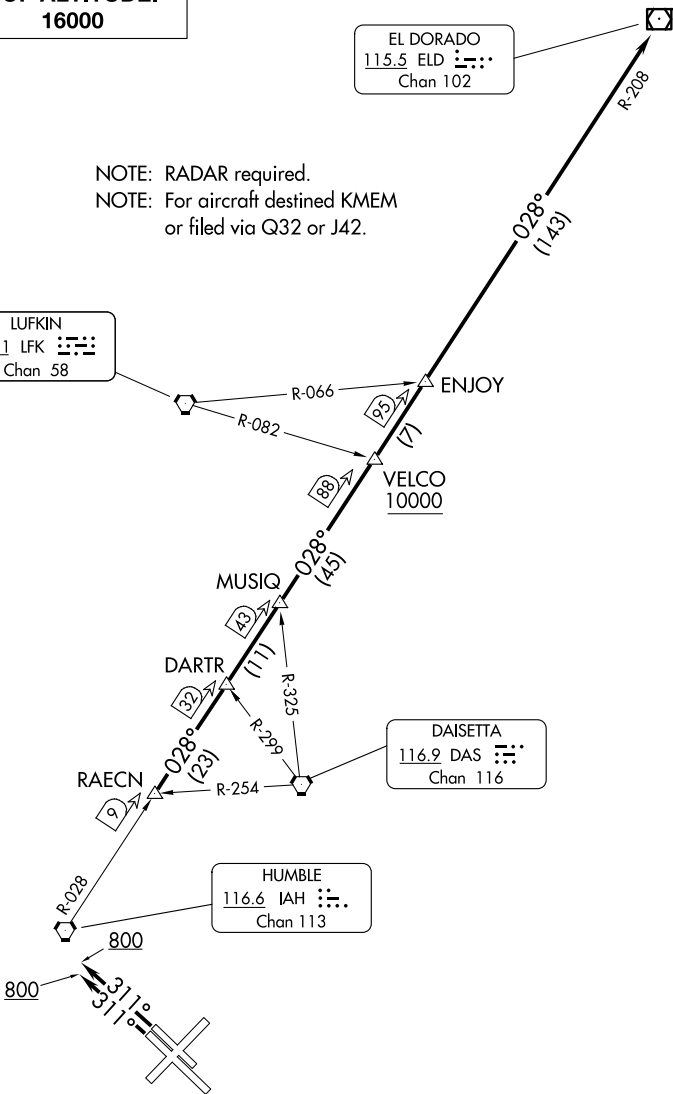
EL DORADO
115.5 ELD :
Chan 102

NOTE: RADAR required.
NOTE: For aircraft destined KMEM
or filed via Q32 or J42.

LUFKIN
112.1 LFK :
Chan 58

DAISETTA
116.9 DAS :
Chan 116

HUMBLE
116.6 IAH :
Chan 113



TAKEOFF MINIMUMS

Rwys 4, 13L/R, 31L/R: Standard.
Rwy 22: Standard with minimum climb of 290' per NM to 1500.

NOTE: Chart not to scale.

(CONTINUED ON FOLLOWING PAGE)

SC-5, 16 APR 2026 to 14 MAY 2026

SC-5, 16 APR 2026 to 14 MAY 2026

EL DORADO ONE DEPARTURE



DEPARTURE ROUTE DESCRIPTION

TAKEOFF RUNWAYS 4, 13L/R, 22: Climb on assigned heading for RADAR vectors to RAECN INT, maintain 16000, expect filed altitude 10 minutes after departure, thence. . . .

TAKEOFF RUNWAYS 31L/R: Climb on heading 311° to 800 before turning, then climb on assigned heading for RADAR vectors to RAECN INT, maintain 16000, expect filed altitude 10 minutes after departure, thence. . . .

. . . .on IAH R-028 and the ELD R-208 to ELD VOR/DME, cross VELCO INT at or above 10000.

SC-5, 16 APR 2026 to 14 MAY 2026

SC-5, 16 APR 2026 to 14 MAY 2026