

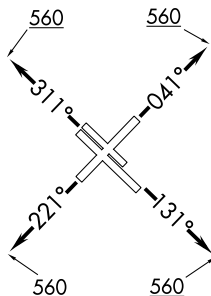
PTRON NINE DEPARTURE (RNAV)

HOUSTON, TEXAS

D-ATIS
124.6
CLNC DEL
125.45
CPDLC
GND CON
121.9
HOBBY TOWER
118.7 256.9
HOUSTON DEP CON
127.125 269.075

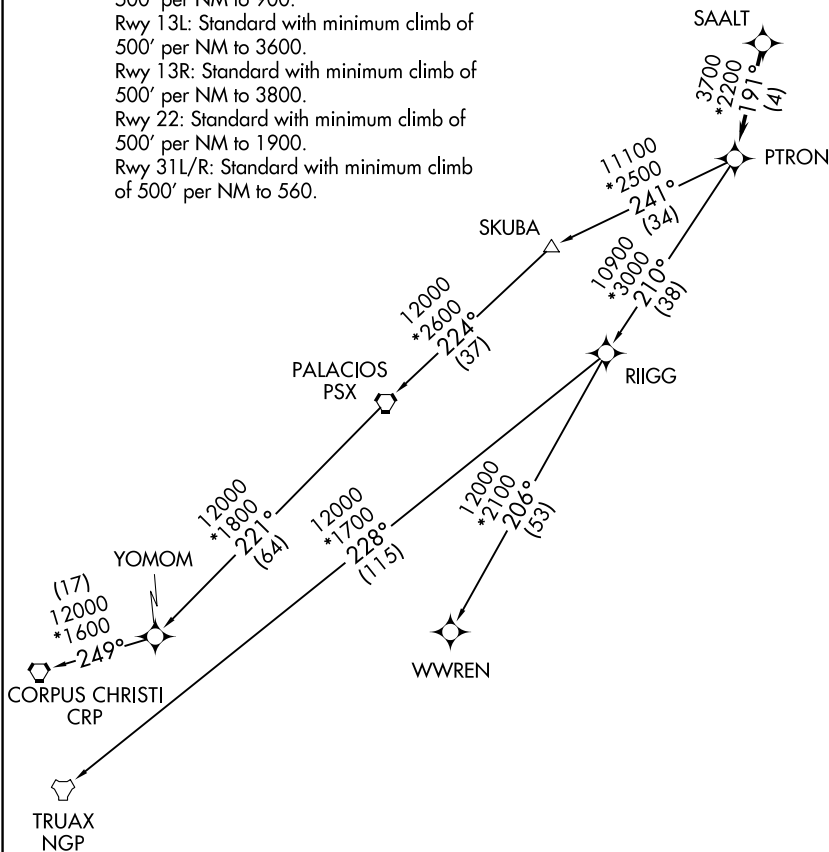
RNAV 1 - DME/DME/IRU or GPS.
RADAR required.

TOP ALTITUDE: 16000



TAKEOFF MINIMUMS

- Rwy 4: Standard with minimum climb of 500' per NM to 900.
- Rwy 13L: Standard with minimum climb of 500' per NM to 3600.
- Rwy 13R: Standard with minimum climb of 500' per NM to 3800.
- Rwy 22: Standard with minimum climb of 500' per NM to 1900.
- Rwy 31L/R: Standard with minimum climb of 500' per NM to 560.



SC-5, 16 APR 2026 to 14 MAY 2026

SC-5, 16 APR 2026 to 14 MAY 2026

NOTE: Chart not to scale.

(NARRATIVE ON FOLLOWING PAGE)

PTRON NINE DEPARTURE (RNAV)

HOUSTON, TEXAS



DEPARTURE ROUTE DESCRIPTION

TAKEOFF RUNWAY 4: Climb on heading 041° to 560, expect RADAR vectors to SAALT, thence. . . .

TAKEOFF RUNWAYS 13L/R: Climb on heading 131° to 560, expect RADAR vectors to SAALT, thence. . . .

TAKEOFF RUNWAY 22: Climb on heading 221° to 560, expect RADAR vectors to SAALT, thence. . . .

TAKEOFF RUNWAYS 31L/R: Climb on heading 311° to 560, expect RADAR vectors to SAALT, thence. . . .

. . . .on track 191° to PTRON, then on (transition). Maintain 16000, expect filed altitude 10 minutes after departure.

CORPUS CHRISTI TRANSITION (PTRON9.CRP)

PALACIOS TRANSITION (PTRON9.PSX)

TRUAX TRANSITION (PTRON9.NGP)

WWREN TRANSITION (PTRON9.WWREN)

YOMOM TRANSITION (PTRON9.YOMOM)

SC-5, 16 APR 2026 to 14 MAY 2026

SC-5, 16 APR 2026 to 14 MAY 2026