

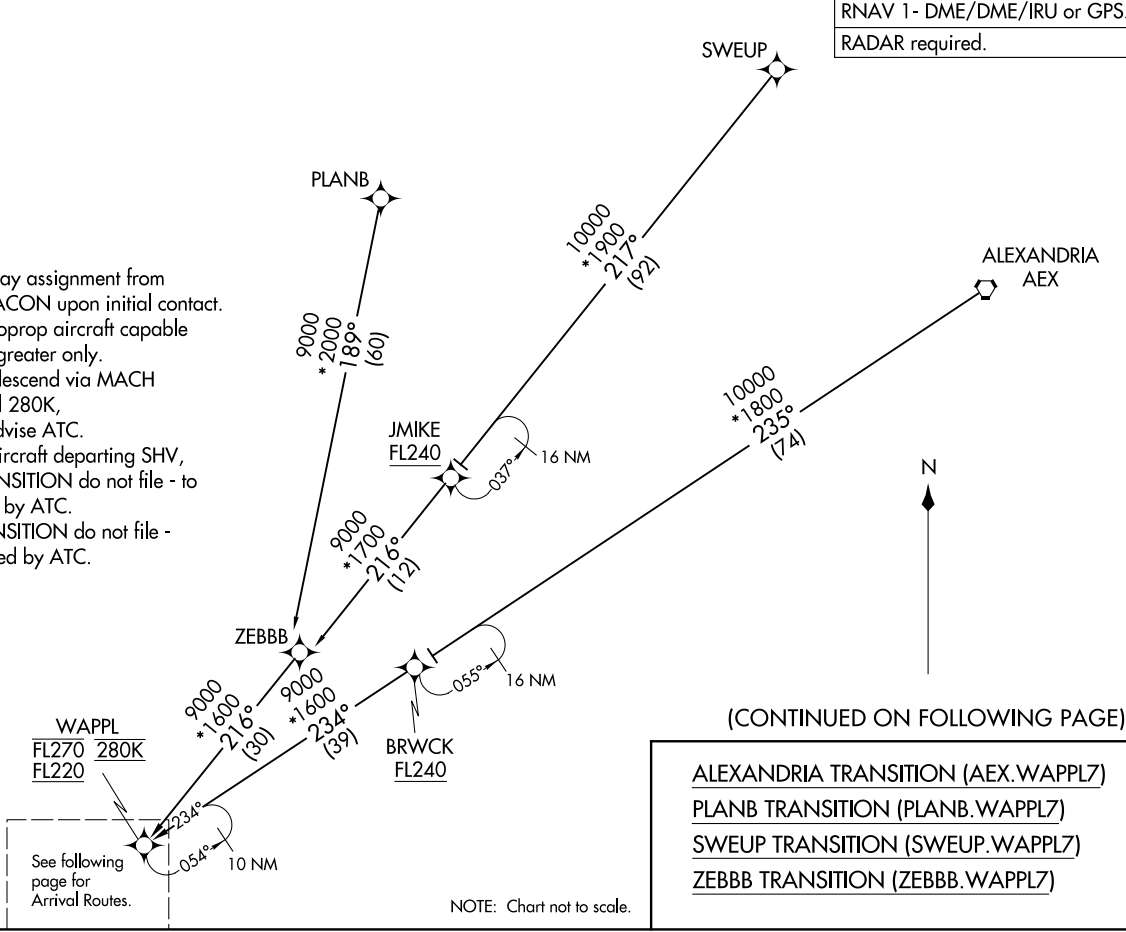
RNAV 1 - DME/DME/IRU or GPS.
RADAR required.

(WAPPL.WAPPL7) 25163
WAPPL SEVEN ARRIVAL (RNAV) Transition Routes
AL-198 (FAA)

HOUSTON, TEXAS

HOUSTON APP CON
120.05 379.1
EFD ATIS
135.575 269.9
HOU D-ATIS
124.6
SGR ATIS
118.125
TME ATIS
119.525

- NOTE: Expect runway assignment from Houston TRACON upon initial contact.
- NOTE: Jet and turboprop aircraft capable of 280K or greater only.
- NOTE: Jet aircraft descend via MACH number until 280K, if unable, advise ATC.
- NOTE: Except for aircraft departing SHV, PLANB TRANSITION do not file - to be assigned by ATC.
- NOTE: ZEBBB TRANSITION do not file - to be assigned by ATC.



(WAPPL.WAPPL7) 12JUN25

WAPPL SEVEN ARRIVAL (RNAV) Transition Routes

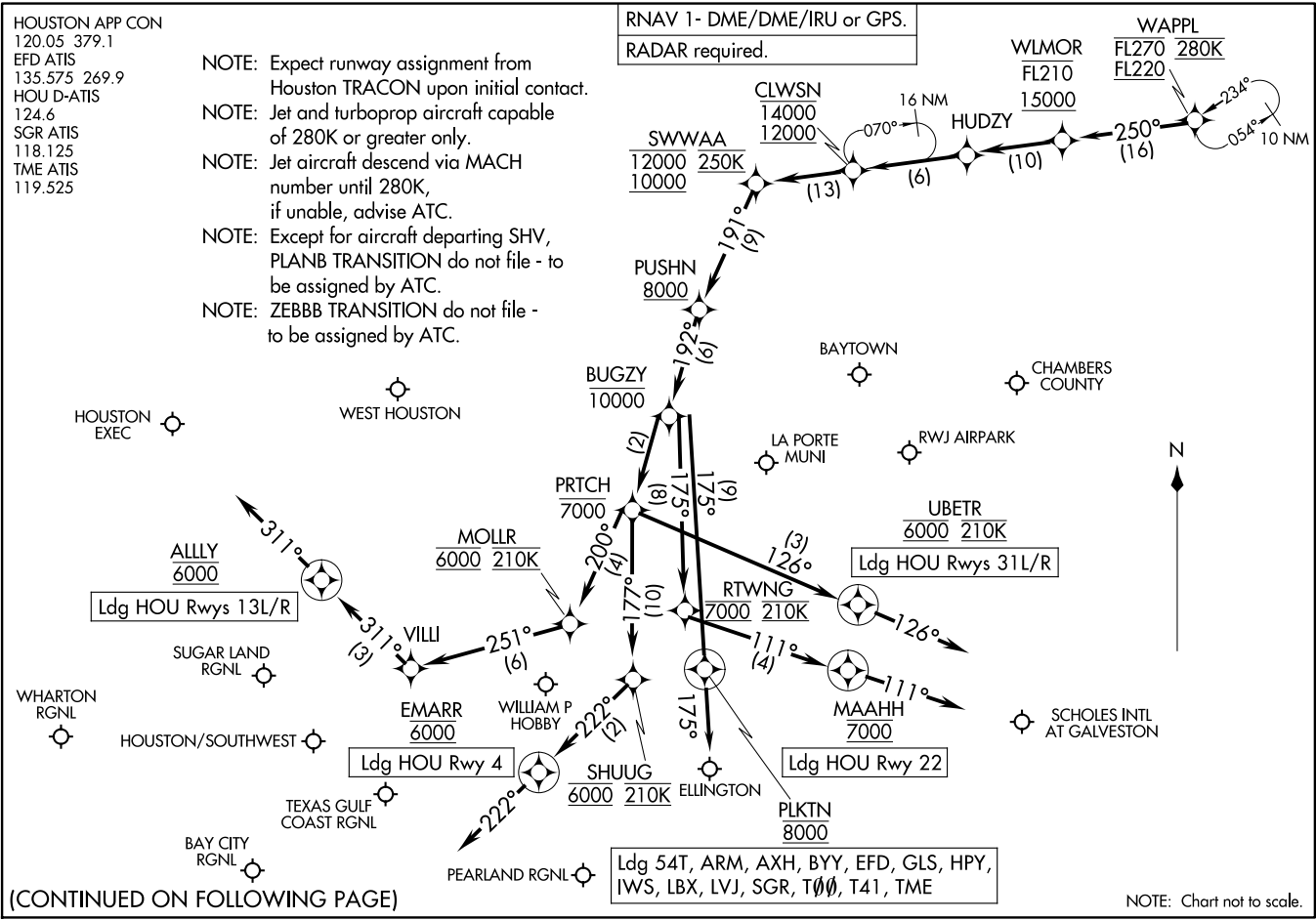
HOUSTON, TEXAS

WAPPL SEVEN ARRIVAL (RNAV) Arrival Routes
(WAPPL, WAPPL7) 12JUN25

WAPPL SEVEN ARRIVAL (RNAV) Arrival Routes
(WAPPL, WAPPL7) 25163

AL-198 (FAA)

HOUSTON, TEXAS



HOUSTON APP CON
120.05 379.1
EFD ATIS
135.575 269.9
HOU D-ATIS
124.6
SGR ATIS
118.125
TME ATIS
119.525

- NOTE: Expect runway assignment from Houston TRACON upon initial contact.
- NOTE: Jet and turboprop aircraft capable of 280K or greater only.
- NOTE: Jet aircraft descend via MACH number until 280K, if unable, advise ATC.
- NOTE: Except for aircraft departing SHV, PLANB TRANSITION do not file - to be assigned by ATC.
- NOTE: ZEBBB TRANSITION do not file - to be assigned by ATC.

RNAV 1- DME/DME/IRU or GPS.
RADAR required.

(CONTINUED ON FOLLOWING PAGE)

NOTE: Chart not to scale.

ARRIVAL ROUTE DESCRIPTION

From WAPPL on track 250° to cross WLMOR between 15000 and FL210, then on track 250° to HUDZY, then on track 250° to cross CLWSN between 12000 and 14000, then on track 250° to cross SWWAA between 10000 and 12000 and at 250K, then on track 191° to cross PUSHN at or above 8000.

LANDING HOU RUNWAY 4: From PUSHN on track 192° to cross BUGZY at or below 10000, then on track 192° to cross PRITCH at or below 7000, then on track 177° to cross SHUUG at 6000 and at 210K, then on track 222° to cross EMARR at 6000, then on track 222°. Expect RADAR vectors to final approach course.

LANDING HOU RUNWAYS 13L/R: From PUSHN on track 192° to cross BUGZY at or below 10000, then on track 192° to cross PRITCH at or below 7000, then on track 200° to cross MOLLR at 6000 and at 210K, then on track 251° to VILLI, then on track 311° to cross ALLY at 6000, then on track 311°. Expect RADAR vectors to final approach course.

LANDING HOU RUNWAY 22: From PUSHN on track 192° to cross BUGZY at or below 10000, then on track 175° to cross RTWNG at 7000 and at 210K, then on track 111° to cross MAAHH at 7000, then on track 111°. Expect RADAR vectors to final approach course.

LANDING HOU RUNWAYS 31L/R: From PUSHN on track 192° to cross BUGZY at or below 10000, then on track 192° to cross PRITCH at or below 7000, then on track 126° to cross UBETR at 6000 and at 210K, then on track 126°. Expect RADAR vectors to final approach course.

LANDING GLS/TME/AXH/HPY/T41/54T/T00/SGR/ARM/BYY/LBX/LVJ/IWS/EFD:
From WAPPL on track 250° to cross WLMOR between 15000 and FL210, then on track 250° to HUDZY, then on track 250° to cross CLWSN between 12000 and 14000, then on track 250° to cross SWWAA between 10000 and 12000 and at 250K, then on track 191° to cross PUSHN at or above 8000, then on track 192° to cross BUGZY at or below 10000, then on track 175° to cross PLKTN at 8000, then on track 175°. Expect RADAR vectors to final approach course.