

HOOSIER FIVE DEPARTURE

AL-203 (FAA)

INDIANAPOLIS INTL (IND)
INDIANAPOLIS, INDIANA

D-ATIS 134.25
 CLNC DEL
 128.75 251.1
 CPDLC
 GND CON
 121.9
 INDY TOWER
 120.9 251.1
 INDIANAPOLIS DEP CON
 124.95 317.8 (EAST)
 119.05 317.8 (WEST)

TOP ALTITUDE:
(JETS) 5000
(PROPS) 3000

BRICKYARD
 116.3 VHP
 Chan 110

LOCALIZER
 111.75 I-UZK
 Chan 54(Y)

I-OQV
 0.3

LOCALIZER
 111.15 I-OQV
 Chan 48(Y)

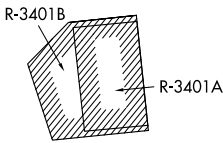
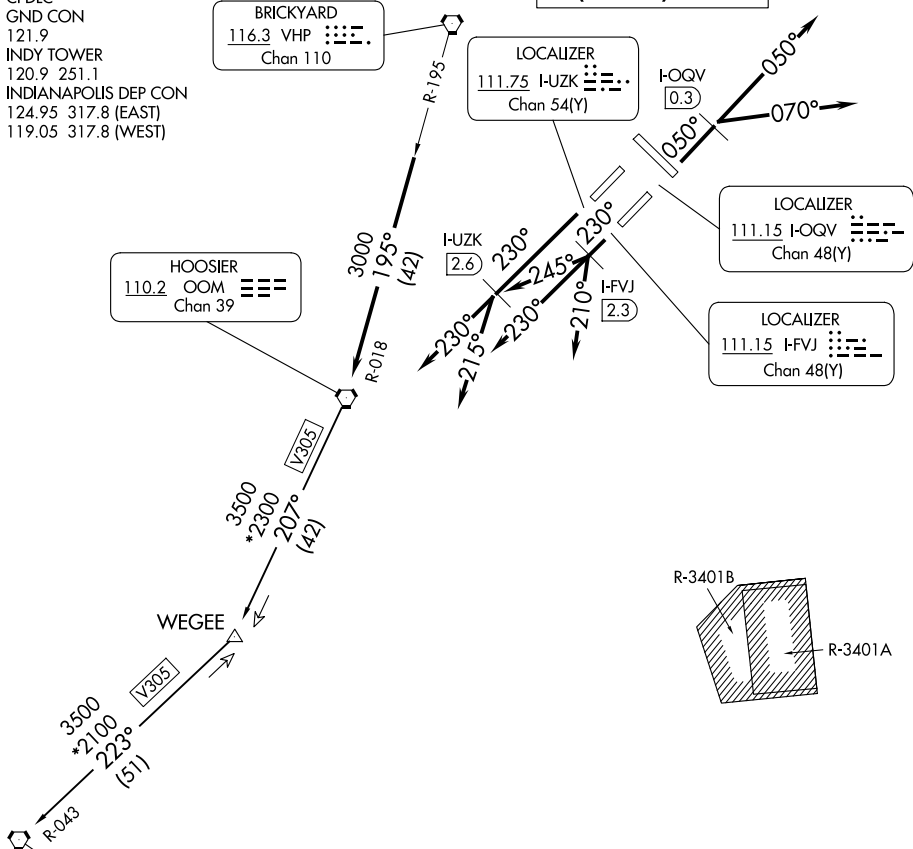
LOCALIZER
 111.15 I-FVJ
 Chan 48(Y)

HOOSIER
 110.2 OOM
 Chan 39

I-UZK
 2.6

I-FVJ
 2.3

POCKET CITY
 113.3 PXV
 Chan 80



TAKEOFF MINIMUMS:
 Rwy 5L/R, 14, 23L/R, 32: Standard.

(NARRATIVE ON FOLLOWING PAGE)

- NOTE: RADAR required.
- NOTE: Select appropriate localizer/DME frequency/channel prior to departure.
- NOTE: Turbojets accelerate to 250K until reaching 10000, if unable advise ATC.
- NOTE: Assigned to aircraft with a requested altitude of 11000 or above.

NOTE: Chart not to scale.

EC-2, 16 APR 2026 to 14 MAY 2026

EC-2, 16 APR 2026 to 14 MAY 2026



DEPARTURE ROUTE DESCRIPTION

TAKEOFF RWY 5R (TURBOJETS ONLY-DME REQUIRED): Climb on heading 050° to F-OQV 0.3 DME, then on assigned heading 050° or 070°. Maintain 5000.

Thence....

TAKEOFF RWY 23R (TURBOJETS ONLY-DME REQUIRED): Climb on heading 230° to F-UZK 2.6 DME, then on assigned heading 230° or 215°. Maintain 5000.

Thence....

TAKEOFF RWY 23L (TURBOJETS ONLY-DME REQUIRED): Climb on heading 230° to F-FVJ 2.3 DME, then on assigned heading 210°, 230°, or 245°. Maintain 5000.

Thence....

TAKEOFF ALL OTHER RWYS (TURBOJETS ONLY): Climb on assigned heading. Maintain 5000. Thence....

TAKEOFF ALL RWYS (PROPELLER ONLY): Climb on assigned heading. Maintain 3000. Thence....

DEPARTING ALL OTHER AUTHORIZED RUNWAYS: Climb on assigned heading to assigned altitude. Thence....

....expect RADAR vectors to join VHP R-195 to OOM VORTAC then via transition or assigned route. Expect clearance to requested altitude ten minutes after departure.

POCKET CITY TRANSITION (OOM5.PXV): From over OOM VORTAC via OOM R-207 to WEGEE, then via PXV R-043 to PXV VORTAC.

EC-2, 16 APR 2026 to 14 MAY 2026

EC-2, 16 APR 2026 to 14 MAY 2026