

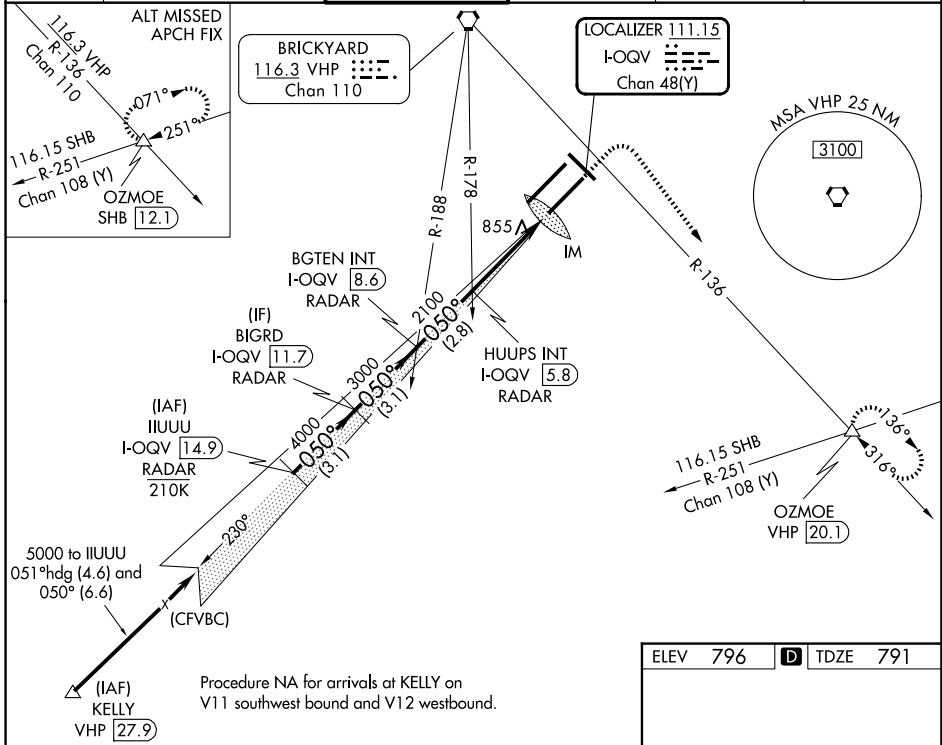
LOC/DME I-QOY <b>111.15</b> Chan 48(Y)	APP CRS <b>050°</b>	Rwy Ldg <b>10000</b>	TDZE <b>791</b>	Apt Elev <b>796</b>
--	------------------------	-------------------------	--------------------	------------------------

# ILS RWY 5R (SA CAT I)

INDIANAPOLIS INTL (IND)

<p><b>▼</b> DME or RADAR required. Simultaneous approach authorized. Requires specific OPSPEC, MSPEC, or LOA approval and use of HUD to DH.</p> <p><b>▲</b> MISSED APPROACH: Climb to 1500 then climbing right turn to 3000 on heading 148° and on VHP VORTAC R-136 to OZMOE INT/VHP 20.1 DME and hold.</p>	<p>ALSIF-2</p>
---	----------------

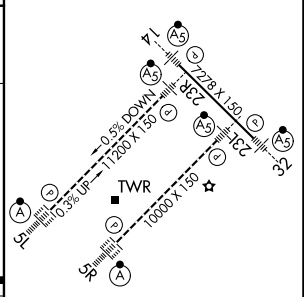
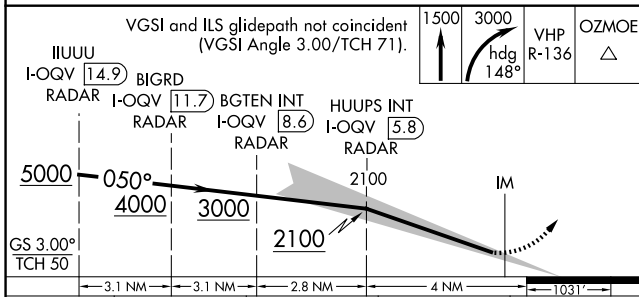
D-ATIS <b>134.25</b>	INDIANAPOLIS APP CON <b>128.175 317.8</b>	INDY TOWER <b>120.9 251.1</b>	GND CON <b>121.9</b>	CLNC DEL <b>128.75 251.1</b>	CPDLC
-------------------------	--	----------------------------------	-------------------------	---------------------------------	-------



EC-2, 16 APR 2026 to 14 MAY 2026

EC-2, 16 APR 2026 to 14 MAY 2026

ELEV 796	<b>D</b> TDZE 791
----------	-------------------



CATEGORY	A	B	C	D
S-ILS 5R	RA 163/14 150 DA 941			

## SA CATEGORY I ILS SPECIAL AIRCREW & AIRCRAFT CERTIFICATION REQUIRED

HIRL all Rwys  
TDZ/CL Rwys 5L and 5R