

LOC/DME I-IND <b>111.75</b> Chan 54 (Y)	APP CRS <b>050°</b>	Rwy Ldg <b>11200</b> TDZE <b>747</b> Apt Elev <b>796</b>
---	------------------------	--

# ILS or LOC RWY 5L

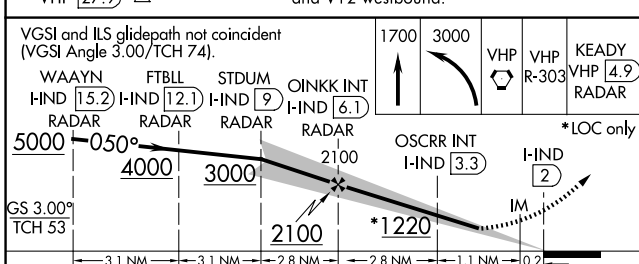
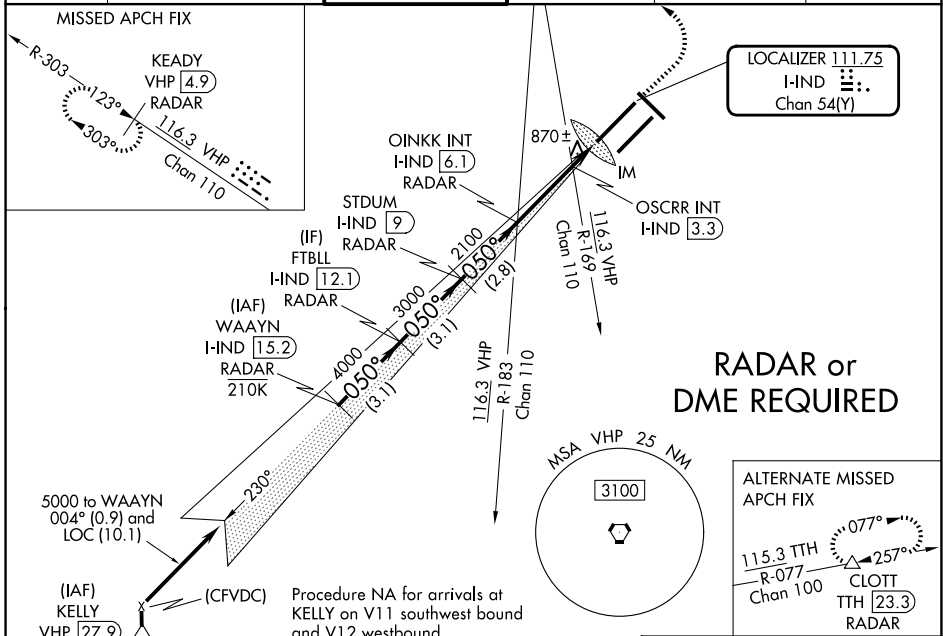
INDIANAPOLIS INTL (IND)

**⚠** Simultaneous approach authorized. DME or RADAR required. For inop ALS, increase S-LOC 5L Cat C/D visibility to 1 1/2 SM. OSCRR fix minimums: For inop ALS, increase S-LOC 5L Cat C/D visibility to RVR 5500.

**ALS-F-2**  
**A**

**MISSED APPROACH:** Climb to 1700 then climbing left turn to 3000 direct VHP VORTAC then on VHP VORTAC R-303 to KEADY/VHP 4.9 DME/RADAR and hold.

D-ATIS <b>134.25</b>	INDIANAPOLIS APP CON <b>128.175 317.8</b>	INDY TOWER <b>120.9 251.1</b>	GND CON <b>121.9</b>	CLNC DEL <b>128.75 251.1</b>	CPDLC
-------------------------	--	----------------------------------	-------------------------	---------------------------------	-------



ELEV 796	<b>D</b> TDZE 747
<b>HRL all Rwws</b> TDZ/CL Rwws 5L and 5R FAF to MAP 4.1 NM	
Knots	60 90 120 150 180
Min:Sec	4:06 2:44 2:03 1:38 1:22

CATEGORY	A	B	C	D
S-ILS 5L	947/18		200 (200-1/2)	
S-LOC 5L	1220/24	473 (500-1/2)	1220/50	473 (500-1)
CIRCLING	1420-1	624 (700-1)	1420-1 3/4 624 (700-1 3/4)	1560-2 1/2 764 (800-2 1/2)
<b>OSCRR FIX MINIMUMS (DUAL VOR RECEIVERS or DME REQUIRED)</b>				
S-LOC 5L	1120/24	373 (400-1/2)	1120/35	373 (400-5/8)
CIRCLING	1420-1	624 (700-1)	1420-1 3/4 624 (700-1 3/4)	1560-2 1/2 764 (800-2 1/2)

EC-2, 16 APR 2026 to 14 MAY 2026

EC-2, 16 APR 2026 to 14 MAY 2026