

(INDY3.VHP) 25163

INDY THREE DEPARTURE

AL-203 (FAA)

INDIANAPOLIS INTL (IND)
INDIANAPOLIS, INDIANA

INDIANAPOLIS DEP CON
124.95 317.8 (EAST)
119.05 317.8 (WEST)
D-ATIS 134.25
CLNC DEL
128.75 251.1
CPDLC
GND CON
121.9
INDY TOWER
120.9 251.1

RADAR required. DME required.

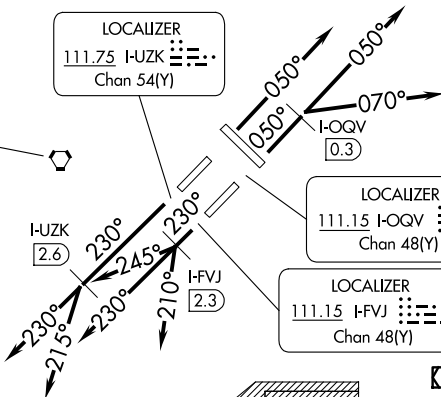
**TOP ALTITUDE:
AS ASSIGNED
BY ATC**

FORT WAYNE
117.8 FWA
Chan 125

CHAMPAIGN
115.75 CMI
Chan 104(Y)

LOCALIZER
111.75 I-UZK
Chan 54(Y)

BRICKYARD
116.3 VHP
Chan 110

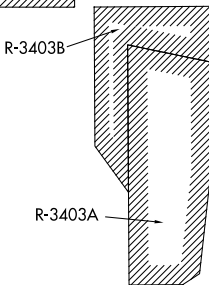
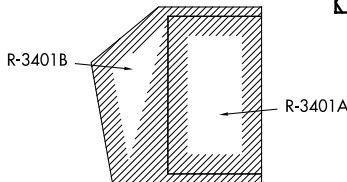


DAYTON
114.5 DGN
Chan 92

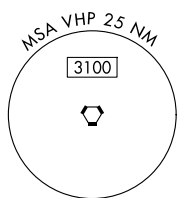
LOCALIZER
111.15 I-OQV
Chan 48(Y)

LOCALIZER
111.15 I-FVJ
Chan 48(Y)

SHELBYVILLE
116.15 SHB
Chan 108 (Y)



POCKET CITY
113.3 PXV
Chan 80



TAKEOFF MINIMUMS:

Rwy 5L/R, 14, 23L/R, 32: Standard.

NOTE: Select appropriate localizer/DME frequency/channel prior to departure.

NOTE: Accelerate to 250K until reaching 10000. If unable advise ATC.

NOTE: Jet aircraft only.

(CONTINUED ON FOLLOWING PAGE)

NOTE: Chart not to scale.

EC-2, 16 APR 2026 to 14 MAY 2026

EC-2, 16 APR 2026 to 14 MAY 2026

INDY THREE DEPARTURE
(INDY3.VHP) 12JUN25

INDIANAPOLIS, INDIANA
INDIANAPOLIS INTL (IND)



DEPARTURE ROUTE DESCRIPTION

TAKEOFF RUNWAY 5R: Climb on heading 050° to I-OQV 0.3 DME, then on assigned heading 050° or 070°. Thence

TAKEOFF RUNWAY 5L: Climb on heading 050°. Thence

TAKEOFF RUNWAY 23R: Climb on heading 230° to I-UZK 2.6 DME, then on assigned heading 230° or 215°. Thence....

TAKEOFF RUNWAY 23L: Climb on heading 230° to I-FVJ 2.3 DME, then on assigned heading 210°, 230°, or 245°. Thence....

TAKEOFF ALL OTHER RUNWAYS: Climb on assigned heading. Thence....

...RADAR vectors to assigned route/fix. Maintain ATC assigned altitude, expect clearance to filed altitude 10 minutes after departure.

EC-2, 16 APR 2026 to 14 MAY 2026

EC-2, 16 APR 2026 to 14 MAY 2026