

INDIANAPOLIS APP CON  
128.175 317.8  
D-ATIS  
134.25

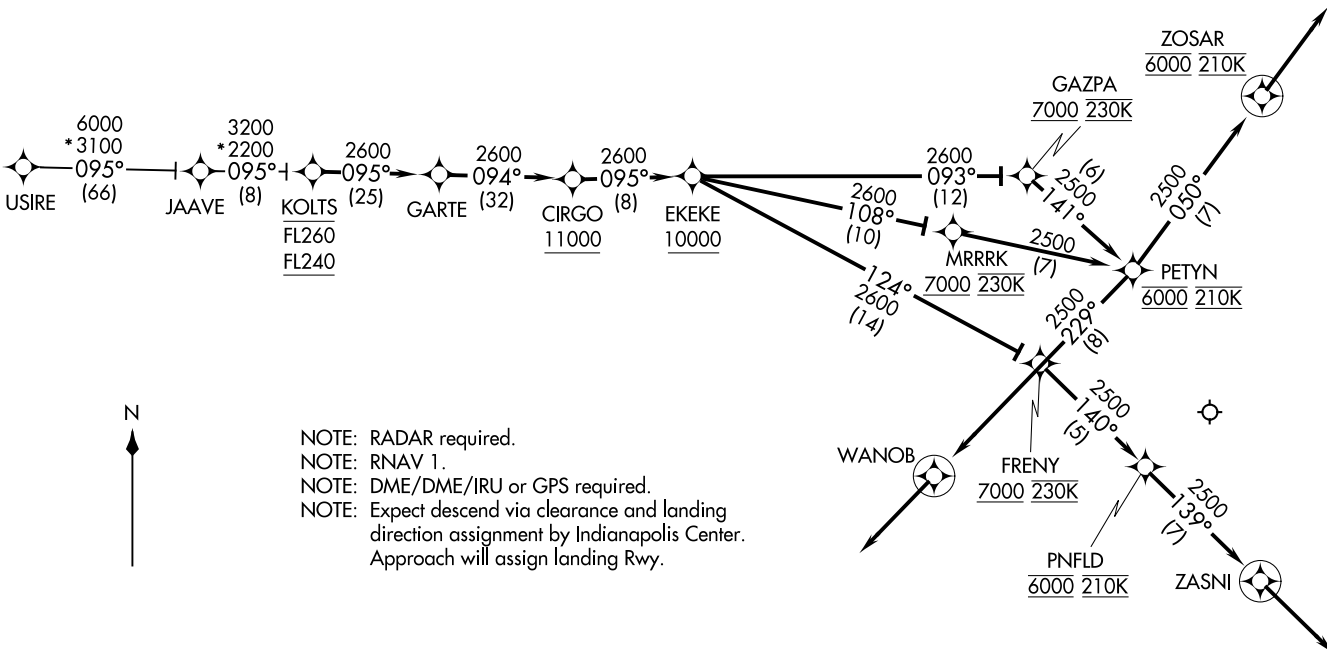
KOLTS TWO ARRIVAL (RNAV)  
(KOLTS, KOLTS2) 10 NOV 16

INDIANAPOLIS, INDIANA  
INDIANAPOLIS INTL (IND)

(KOLTS, KOLTS2) 17173  
KOLTS TWO ARRIVAL (RNAV)

AL-203 (FAA)

INDIANAPOLIS INTL (IND)  
INDIANAPOLIS, INDIANA



NOTE: RADAR required.  
NOTE: RNAV 1.  
NOTE: DME/DME/IRU or GPS required.  
NOTE: Expect descend via clearance and landing direction assignment by Indianapolis Center.  
Approach will assign landing Rwy.

(NARRATIVE ON FOLLOWING PAGE)

NOTE: Chart not to scale.

ARRIVAL ROUTE DESCRIPTION

JAAVE TRANSITION (JAAVE.KOLTS2):

USIRE TRANSITION (USIRE.KOLTS2):

From KOLTS on track 095° to GARTE, then on track 094° to cross CIRGO at or above 11000, then on track 095° to cross EKEKE at or above 10000.

LANDING RWYS 5L/R: From EKEKE on track 093° to cross GAZPA at or above 7000 and at 230K, then on track 141° to cross PETYN at 6000 and at 210K, then on track 229° to WANOB, then on track 229°. Expect RADAR vectors to final approach course.

LANDING RWYS 23L/R: From EKEKE on track 108° to cross MRRRK at or above 7000 and at 230K, then on track 108° to cross PETYN at 6000 and at 210K, then on track 050° to cross ZOSAR at 6000 and at 210K, then on track 050°. Expect RADAR vectors to final approach course.

LANDING RWY 32: From EKEKE on track 124° to cross FRENY at or above 7000 and at 230K, then on track 140° to cross PNFLD at 6000 and at 210K, then on track 139° to ZASNI, then on track 139°. Expect RADAR vectors to final approach course.

LOST COMMUNICATIONS: In the event of lost communication prior to runway assignment, execute ILS or LOC Rwy 23R approach.

EC-2, 16 APR 2026 to 14 MAY 2026

EC-2, 16 APR 2026 to 14 MAY 2026