

D-ATIS  
134.25  
CLNC DEL  
128.75 251.1  
CPDLC  
GND CON  
121.9  
INDY TOWER  
120.9 251.1  
INDIANAPOLIS DEP CON  
124.95 317.8 (EAST)  
119.05 317.8 (WEST)

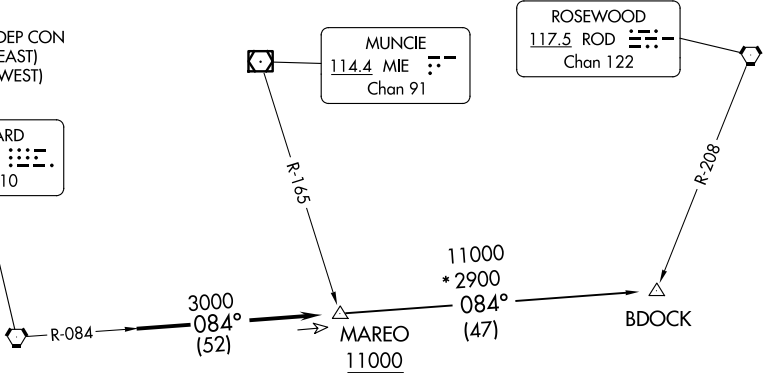
**TAKEOFF MINIMUMS**  
Rwys 5L/R, 14, 23L/R, 32: Standard.

**TOP ALTITUDE:**  
**(JETS) 5000**  
**(PROPS) 3000**

BRICKYARD  
116.3 VHP  
Chan 110

MUNCIE  
114.4 MIE  
Chan 91

ROSEWOOD  
117.5 ROD  
Chan 122



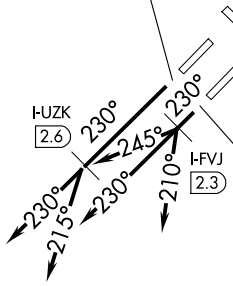
LOCALIZER  
111.75 HUZK  
Chan 54(Y)

I-OQV  
0.3

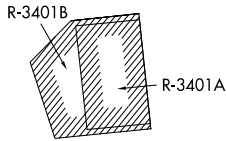


LOCALIZER  
111.15 I-OQV  
Chan 48(Y)

LOCALIZER  
111.15 I-FVJ  
Chan 48(Y)



- NOTE: RADAR required.
- NOTE: Select appropriate localizer/DME frequency/channel prior to departure.
- NOTE: Turbojets accelerate to 250K until reaching 10000, if unable advise ATC.
- NOTE: Assigned to aircraft with a requested altitude of 11000 or above.



(NARRATIVE ON FOLLOWING PAGE)

NOTE: Chart not to scale.

EC-2, 16 APR 2026 to 14 MAY 2026

EC-2, 16 APR 2026 to 14 MAY 2026



DEPARTURE ROUTE DESCRIPTION

TAKEOFF RWY 5R (TURBOJETS ONLY-DME REQUIRED): Climb on heading 050° to I-OQV 0.3 DME, then on assigned heading 050° or 070°. Maintain 5000.

Thence . . . .

TAKEOFF RWY 23R (TURBOJETS ONLY-DME REQUIRED): Climb on heading 230° to I-UZK 2.6 DME, then on assigned heading 230° or 215°. Maintain 5000.

Thence . . . .

TAKEOFF RWY 23L (TURBOJETS ONLY-DME REQUIRED): Climb on heading 230° to I-FVJ 2.3 DME, then on assigned heading 210°, 230°, or 245°. Maintain 5000.

Thence . . . .

TAKEOFF ALL OTHER RWYS (TURBOJETS ONLY): Climb on assigned heading. Maintain 5000. Thence . . . .

TAKEOFF ALL RWYS (PROPELLER ONLY): Climb on assigned heading. Maintain 3000. Thence . . . .

DEPARTING ALL OTHER AUTHORIZED RUNWAYS: Climb on assigned heading to assigned altitude. Thence . . . .

. . . . expect RADAR vectors to join VHP R-084 to MAREO INT then via transition or assigned route. Expect clearance to requested altitude ten minutes after departure.

BDOCK TRANSITION (MAREO5.BDOCK): From over MAREO INT via VHP R-084 to BDOCK INT.

EC-2, 16 APR 2026 to 14 MAY 2026

EC-2, 16 APR 2026 to 14 MAY 2026