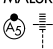


APP CRS	Rwy Ldg	7278
320°	TDZE	793
	Apt Elev	796

RNAV (RNP) Z RWY 32

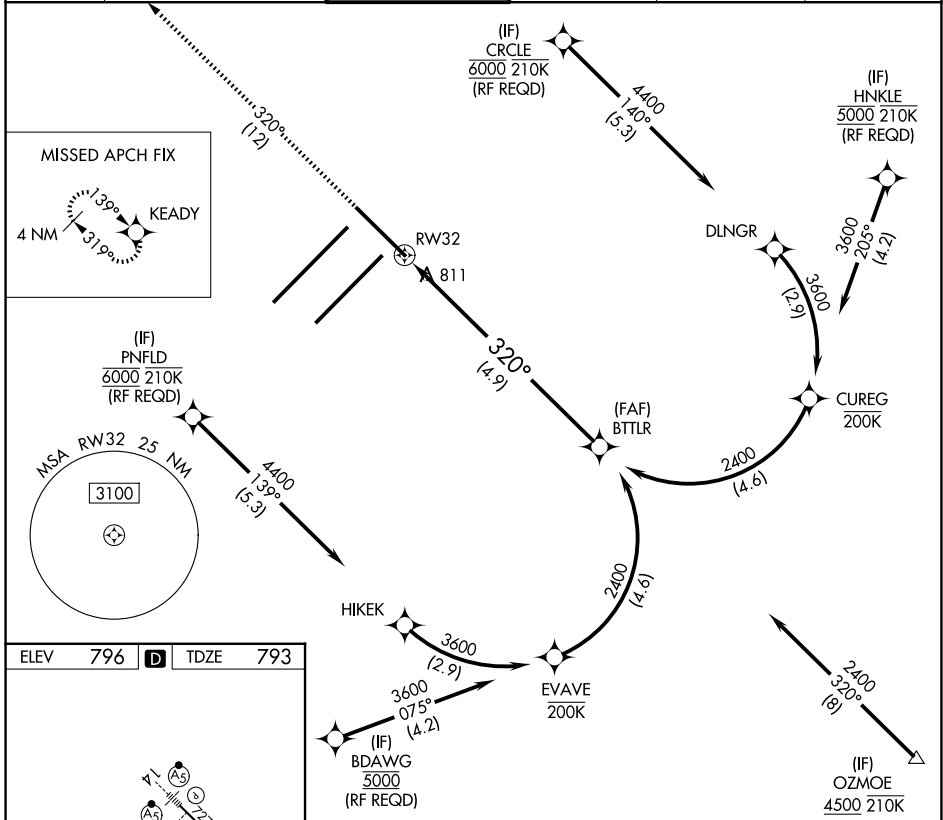
INDIANAPOLIS INTL (IND)

▽ For uncompensated Baro-VNAV systems, procedure NA below -18°C (2°F) or above 54°C (130°F). GPS required.

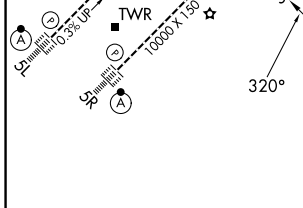
MALSR 

MISSED APPROACH: Climb to 3000 on track 320° to KEADY and hold.

D-ATIS	INDIANAPOLIS APP CON	INDY TOWER	GND CON	CLNC DEL	CPDLC
134.25	128.175 317.8	120.9 251.1	121.9	128.75 251.1	



ELEV	796	D	TDZE	793
------	------------	----------	------	------------



CATEGORY	A	B	C	D
RNP 0.19 DA		1134/30	341 (400-%)	
RNP 0.30 DA		1196/45	403 (400-%)	

HIRL all Rwys
TDZ/CL Rwys 5L and 5R

AUTHORIZATION REQUIRED

EC-2, 16 APR 2026 to 14 MAY 2026

EC-2, 16 APR 2026 to 14 MAY 2026