

APP CRS	Rwy Ldg	11200
050°	TDZE	747
	Apt Elev	796

RNAV (RNP) Z RWY 5L

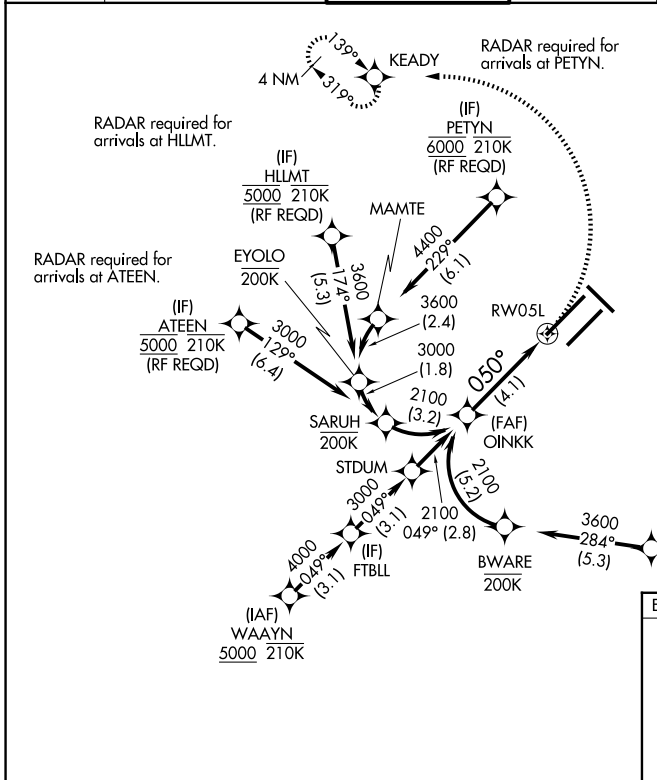
INDIANAPOLIS INTL (IND)

▼ For uncompensated Baro-VNAV systems, procedure NA below -18°C (0°F) or above 54°C (130°F). GPS required. For inop ALS, increase RNP 0.30 all Cats visibility to 1½ SM. Simultaneous approach authorized.

ALSF-2

MISSED APPROACH:
Climbing left turn to 3000 direct KEADY and hold.

D-ATIS	INDIANAPOLIS APP CON	INDY TOWER	GND CON	CLNC DEL	CPDLC
134.25	128.175 317.8	120.9 251.1	121.9	128.75 251.1	



ELEV 796 **D** TDZE 747

CATEGORY	A	B	C	D
RNP 0.30 DA		1197/60	450 (500-1½)	
AUTHORIZATION REQUIRED				

HIRL all Rwys
TDZ/CL Rwys 5L and 5R

EC-2, 16 APR 2026 to 14 MAY 2026

EC-2, 16 APR 2026 to 14 MAY 2026