

APP CRS	Rwy Ldg	10000
050°	TDZE	791
	Apt Elev	796

RNAV (RNP) Z RWY 5R

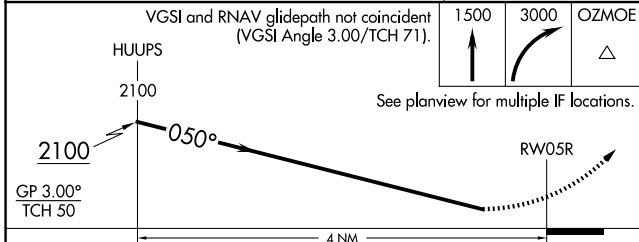
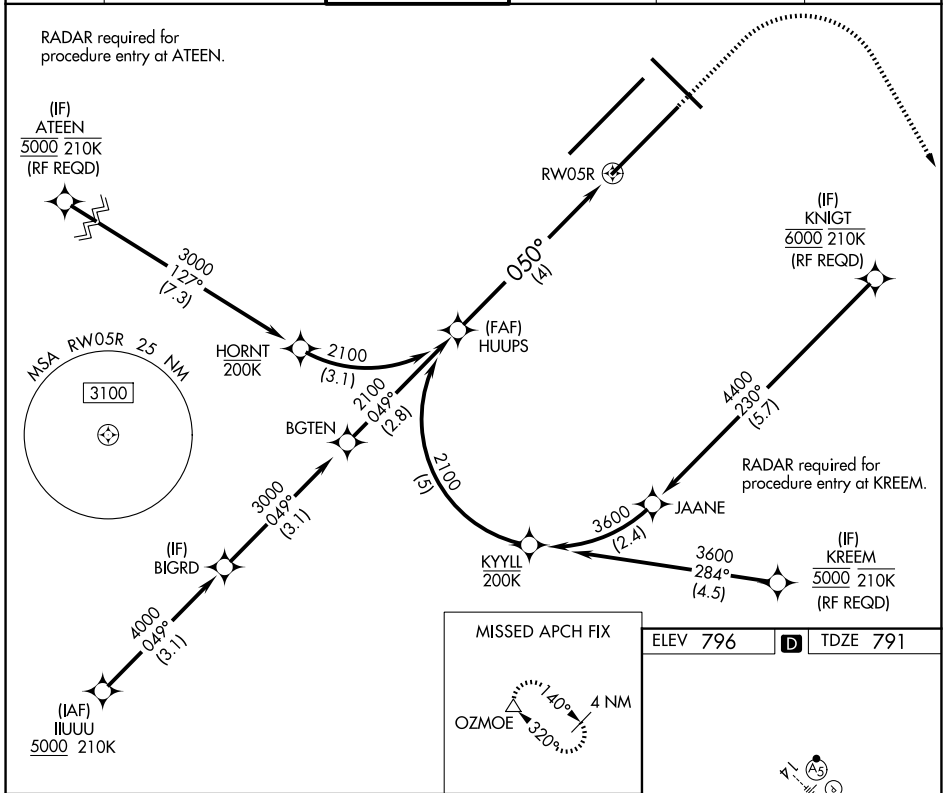
INDIANAPOLIS INTL (IND)

▼ For uncompensated Baro-VNAV systems, procedure NA below -18°C (0°F) or above 54°C (130°F). GPS required. Simultaneous approach authorized, for arrivals from IUUU only.

ALSF-2

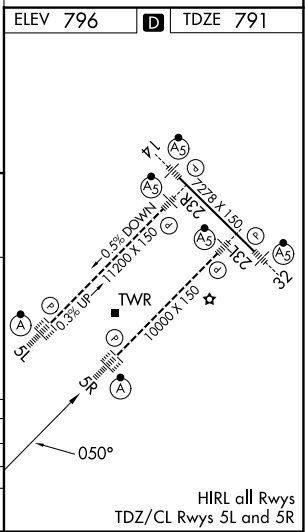
MISSED APPROACH:
Climb to 1500, then climbing right turn to 3000 direct OZMOE and hold.

D-ATIS	INDIANAPOLIS APP CON	INDY TOWER	GND CON	CLNC DEL	CPDLC
134.25	128.175 317.8	120.9 251.1	121.9	128.75 251.1	



CATEGORY	A	B	C	D
RNP 0.11 DA		1174/45	383 (400-7/8)	
RNP 0.30 DA		1271/60	480 (500-1¼)	

AUTHORIZATION REQUIRED



EC-2, 16 APR 2026 to 14 MAY 2026

EC-2, 16 APR 2026 to 14 MAY 2026