

WAAS CH 45706 W05A	APP CRS 050°	Rwy Ldg 11200 TDZE 747 Apt Elev 796
--	------------------------	--

RNAV (GPS) Y RWY 5L

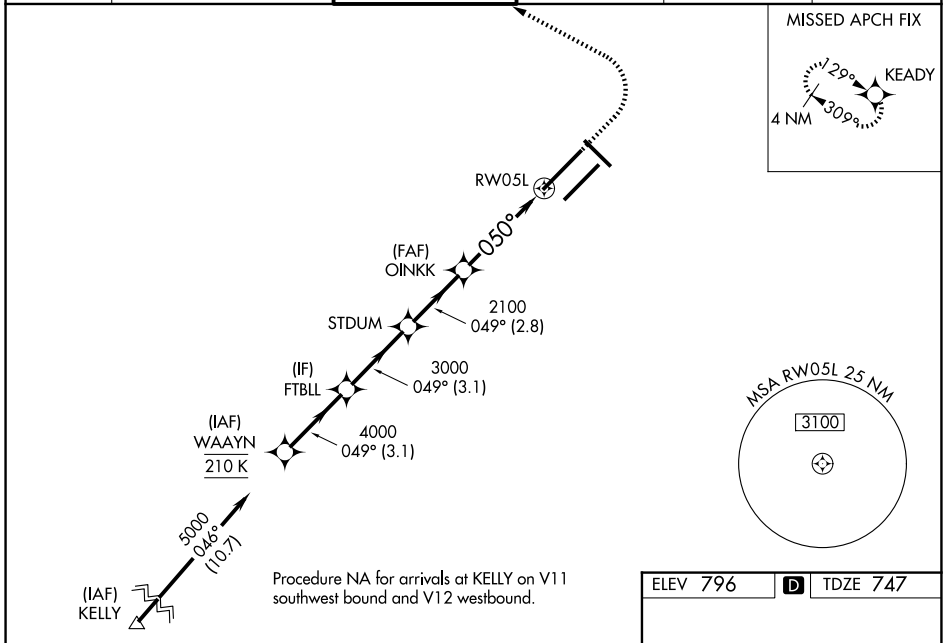
INDIANAPOLIS INTL (IND)

T **A** For uncompensated Baro-VNAV systems, LNAV/VNAV NA below -18°C (0°F) or above 54°C (130°F). DME/DME RNP-0.3 NA. Simultaneous approach authorized. LNAV procedure NA during simultaneous operations. Use of FD or AP providing RNAV track guidance required during simultaneous operations. For inoperative ALS, increase LNAV/VNAV all Cats visibility to 1¼ SM and increase LNAV Cat C/D visibility to 1¾ SM.

ALSF-2

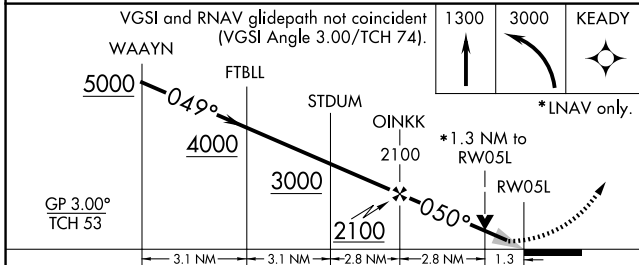
MISSED APPROACH: Climb to 1300 then climbing left turn to 3000 direct KEADY and hold.

D-ATIS 134.25	INDIANAPOLIS APP CON 128.175 317.8	INDY TOWER 120.9 251.1	GND CON 121.9	CLNC DEL 128.75 251.1	CPDLC
-------------------------	--	---	-------------------------	---------------------------------	-------



EC-2, 16 APR 2026 to 14 MAY 2026

EC-2, 16 APR 2026 to 14 MAY 2026



CATEGORY	A	B	C	D
LPV DA	947/18 200 (200-½)			
LNAV/VNAV DA	1136/45 389 (400-¾)			
LNAV MDA	1220/24 473 (500-½)	1220/50 473 (500-1)		
CIRCLING	1420-1 624 (700-1)	1420-1¾ 624 (700-¾)	1560-2½ 764 (800-2½)	

ELEV 796 **D** TDZE 747

HIRL all Rwws
TDZ/CL Rwws 5L and 5R