

WAAS CH <b>50306</b> <b>W05B</b>	APP CRS <b>050°</b>	Rwy Ldg <b>10000</b> TDZE <b>791</b> Apt Elev <b>796</b>
--	------------------------	--

# RNAV (GPS) Y RWY 5R

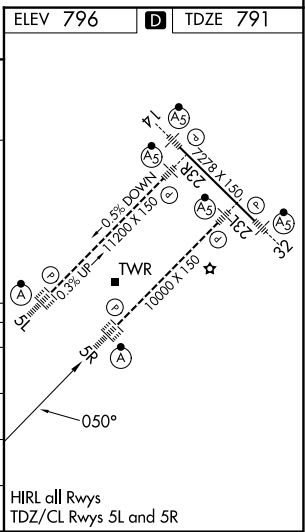
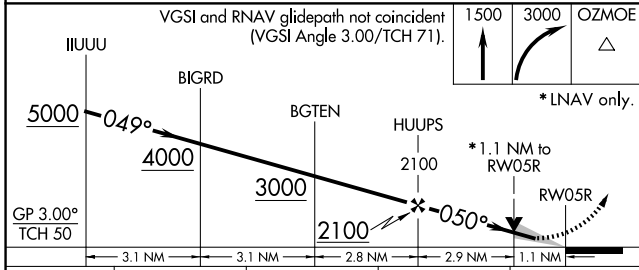
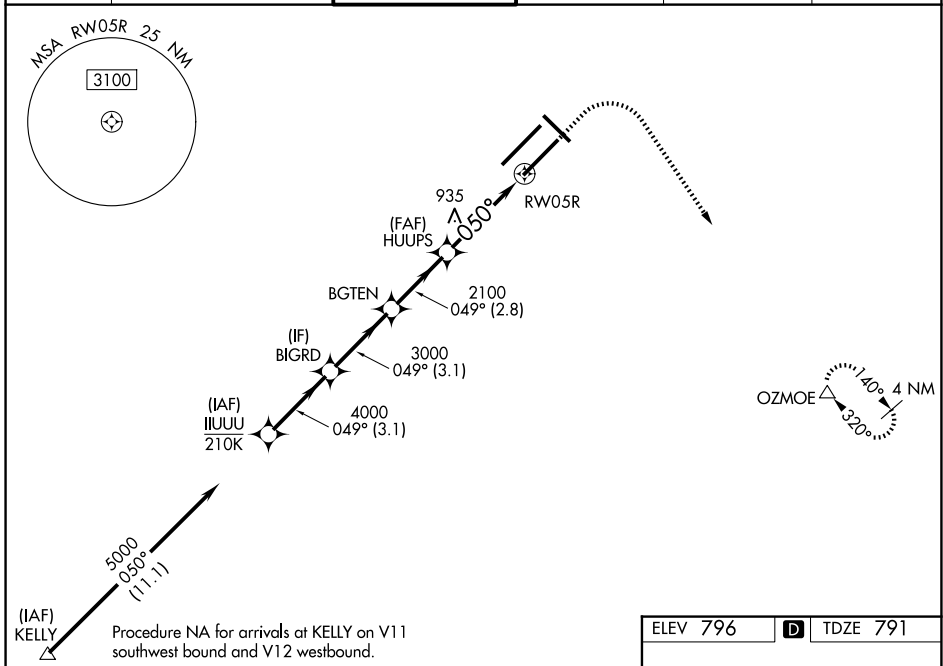
INDIANAPOLIS INTL (IND)

▼ For uncompensated Baro-VNAV systems, LNAV/VNAV NA below -18°C (0°F) or above 54°C (130°F). DME/DME RNP-0.3 NA. Simultaneous approach authorized. LNAV procedure NA during simultaneous operations. Use of FD or AP providing RNAV track guidance required during simultaneous operations.

ALSF-2

MISSED APPROACH: Climb to 1500 then climbing right turn to 3000 direct OZMOE and hold.

D-ATIS <b>134.25</b>	INDIANAPOLIS APP CON <b>128.175 317.8</b>	INDY TOWER <b>120.9 251.1</b>	GND CON <b>121.9</b>	CLNC DEL <b>128.75 251.1</b>	CPDLC
-------------------------	--	----------------------------------	-------------------------	---------------------------------	-------



CATEGORY	A	B	C	D
LPV DA		991/18	200 (200-½)	
LNAV/VNAV DA		1172/40	381 (400-¾)	
LNAV MDA	1220/24	429 (500-½)	1220/40	429 (500-¾)
CIRCLING	1420-1	624 (700-1)	1420-1¾ 624 (700-1¾)	1560-2½ 764 (800-2½)

EC-2, 16 APR 2026 to 14 MAY 2026

EC-2, 16 APR 2026 to 14 MAY 2026