

LOC I-JHF 111.7	APP CRS 159°	Rwy Ldg TDZE Apt Elev	5387 341 341
---------------------------	------------------------	-----------------------------	-----------------------------------------

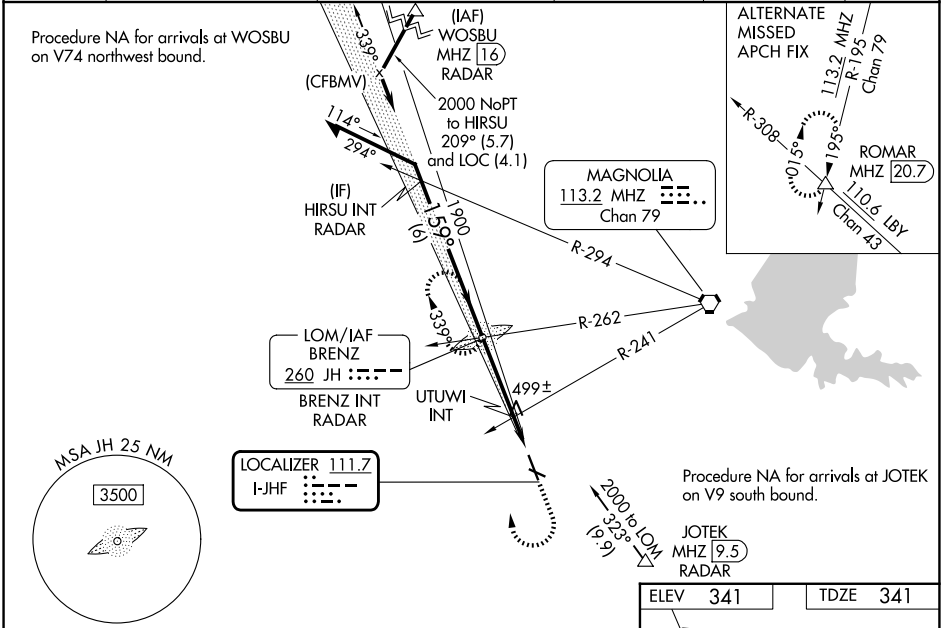
ILS or LOC RWY 16

HAWKINS FLD (HKS)

⚠ When local altimeter setting not received, use Jackson-Medgar Wiley Evers Intl altimeter setting, increase all DA 19 feet and all MDA 20 feet, increase Circling Cat C visibility ¼ mile and UTUWI fix Circling Cat C visibility ¼ mile. For inop MALS, increase S-LOC 16 Cats C/D visibility ¾, increase UTUWI fix S-LOC 16 Cats C/D visibility ¾. For inop MALS when using Jackson-Medgar Wiley Evers Intl altimeter setting increase S-LOC Cats C/D visibility ¾. Glideslope unusable when control tower closed, only localizer minimums authorized during this period. ADF required.

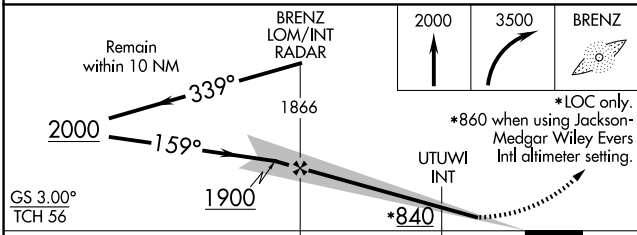
MALS
⚠ MISSED APPROACH:
Climb to 2000 then climbing right turn to 3500 direct BRENZ LOM and hold.

ASOS 120.625	JACKSON APP CON * 123.9 319.2	HAWKINS TOWER * 119.65 (CTAF) 0 257.8	GND CON 121.9 239.0	CLNC DEL 121.9 (When twr closed)	UNICOM 122.95
------------------------	-----------------------------------------	-------------------------------------------------	-------------------------------	-----------------------------------------------	-------------------------



SC-4, 16 APR 2026 to 14 MAY 2026

SC-4, 16 APR 2026 to 14 MAY 2026



ELEV	341	TDZE	341
TWR	■		
REIL Rwy 34	①		
HIRL Rwy 16-34	①		
MIRL Rwy 11-29			
FAF to MAP 4.6 NM			
Knots	60	90	120 150 180
Min:Sec	4:36	3:04	2:18 1:50 1:32

CATEGORY	A	B	C	D
S-ILS 16		541-½	200 (200-½)	
S-LOC 16	840-½	499 (500-½)	840-1	499 (500-1)
CIRCLING	860-1	880-1	1140-2¼	1320-3
	519 (600-1)	539 (600-1)	799 (800-2¼)	979 (1000-3)
UTUWI FIX MINIMUMS (DUAL VOR RECEIVERS REQUIRED)				
S-LOC 16	760-½	419 (500-½)	760-¾	419 (500-¾)
CIRCLING	860-1	880-1	1140-2¼	1320-3
	519 (600-1)	539 (600-1)	799 (800-2¼)	979 (1000-3)