


WAAS CH 50316 W16A	APP CRS 159°	Rwy Ldg TDZE Apt Elev	5387 341 341
--	------------------------	-----------------------------	---

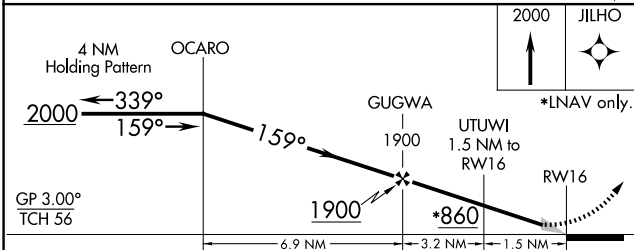
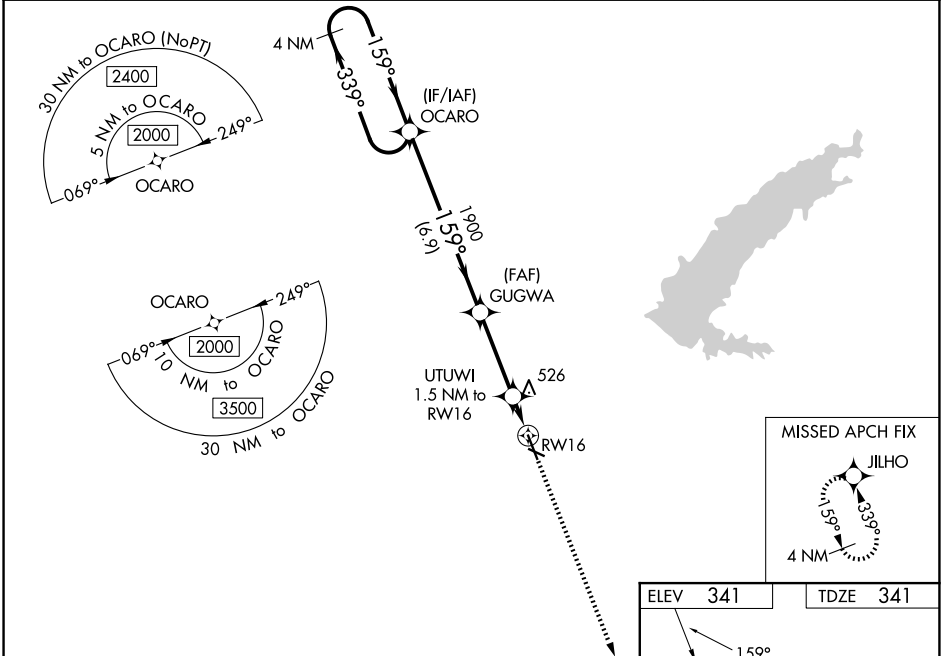
RNAV (GPS) RWY 16

HAWKINS FLD (HKS)

⚠ Baro-VNAV NA when using Jackson-Medgar Wiley Evers Intl altimeter setting. For uncompensated Baro-VNAV systems, LNAV/VNAV NA below -6°C (22°F) or above 54°C (130°F). DME/DME RNP-0.3 NA. When local altimeter setting not received, use Jackson-Medgar Wiley Evers Intl altimeter setting and increase all DA 19 feet and all MDA 20 feet. Increase LNAV/VNAV all Cats and LNAV Cats C/D visibilities 1/8 mile and Circling Cat C 1/4 mile. For inop MALS when using Jackson-Medgar Wiley Evers Intl altimeter setting increase LNAV/VNAV all Cats to 1 1/8.

MALS
 = MISSED APPROACH:
 Climb to 2000 direct JILHO and hold.

ASOS 120.625	JACKSON APP CON * 123.9 319.2	HAWKINS TOWER * 119.65 (CTAF) 0 257.8	GND CON 121.9 239.0	CLNC DEL 121.9 (When twr closed)	UNICOM 122.95
------------------------	---	---	-------------------------------	---	-------------------------



ELEV	341	TDZE	341
------	-----	------	-----

This diagram shows the final approach to RWY 16. It features a 159° descent from 2000 feet to 341 feet. The slope is 0.3% UP and -0.7% UP. Key altitudes and distances are marked: 9L, 5387 x 1.50, 3431 x 1.50, and 27. A TWR symbol is also present.

CATEGORY	A	B	C	D
LPV DA		542-1/2	201 (300-1/2)	
LNAV/VNAV DA		677-5/8	336 (400-5/8)	
LNAV MDA	780-1/2	439 (500-1/2)	780-3/4	439 (500-3/4)
CIRCLING	860-1 519 (600-1)	880-1 539 (600-1)	1140-2 1/4 799 (800-2 1/4)	1320-3 979 (1000-3)