

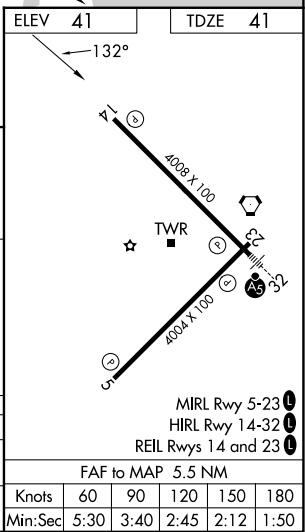
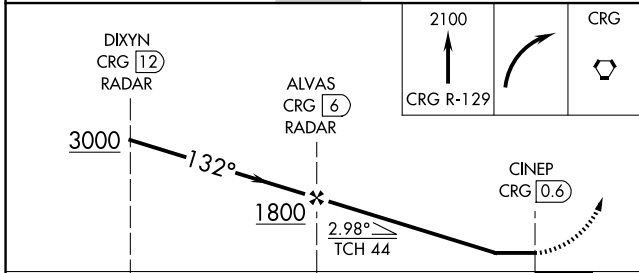
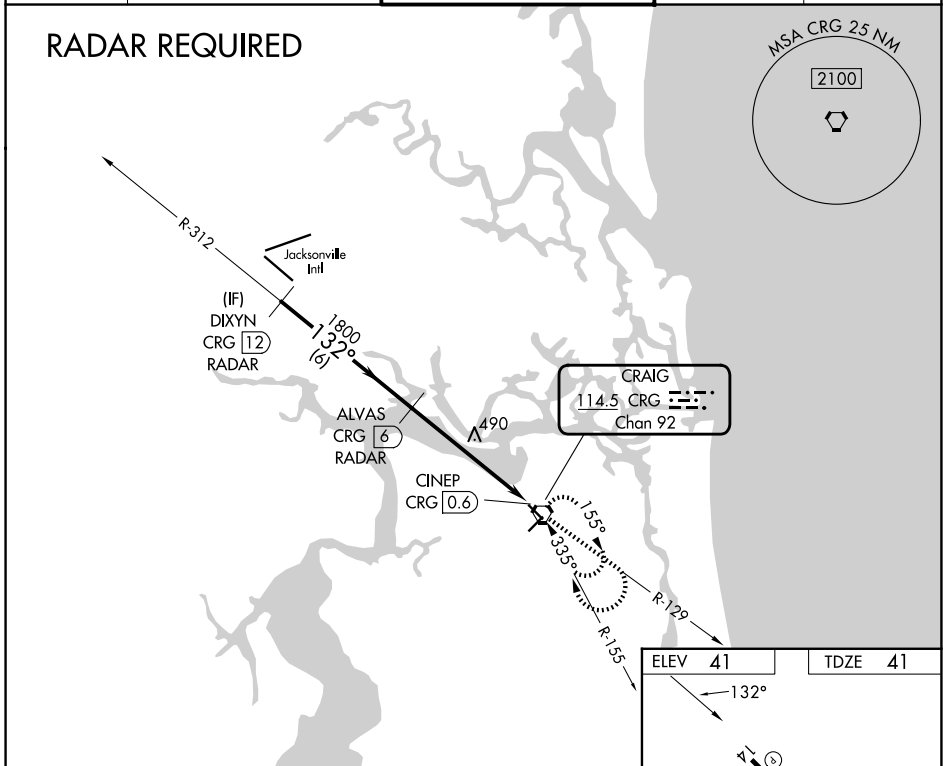
VORTAC CRG 114.5 Chan 92	APP CRS 132°	Rwy Ldg TDZE 41 Apt Elev 41	4008 41 41
--	------------------------	---	---------------------------------------

VOR RWY 14
JACKSONVILLE EXEC AT CRAIG (CRG)

▼ Procedure NA at night.
▲ DME or RADAR required.
▲ Helicopter visibility reduction below 1 SM NA.

MISSED APPROACH: Climb to 2100 via CRG VORTAC R-129 then right turn direct CRG VORTAC and hold.

ATIS 125.4	JACKSONVILLE APP CON 124.9 308.4	CRAIG TOWER ★ 132.1 (CTAF) 0 269.525	GND CON 121.8	UNICOM 122.95
----------------------	--	--	-------------------------	-------------------------



CATEGORY	A	B	C	D
S-14	800-1 759 (800-1)	800-1¼ 759 (800-1¼)	800-2½	759 (800-2½)
CIRCLING	800-1 759 (800-1)	800-1¼ 759 (800-1¼)	800-2½	759 (800-2½)

FAF to MAP 5.5 NM					
Knots	60	90	120	150	180
Min:Sec	5:30	3:40	2:45	2:12	1:50

SE-3, 16 APR 2026 to 14 MAY 2026

SE-3, 16 APR 2026 to 14 MAY 2026