

HI-TACAN Z RWY 28

TACAN Chan 19	NIP 286°	APCH CRS 286°	Rwy Idg TDZE Arprt Elev 9003 13 23	[USN]	JACKSONVILLE NAS (TOWERS FLD) (KNIP)
-------------------------	--------------------	-------------------------	--	-------	--------------------------------------

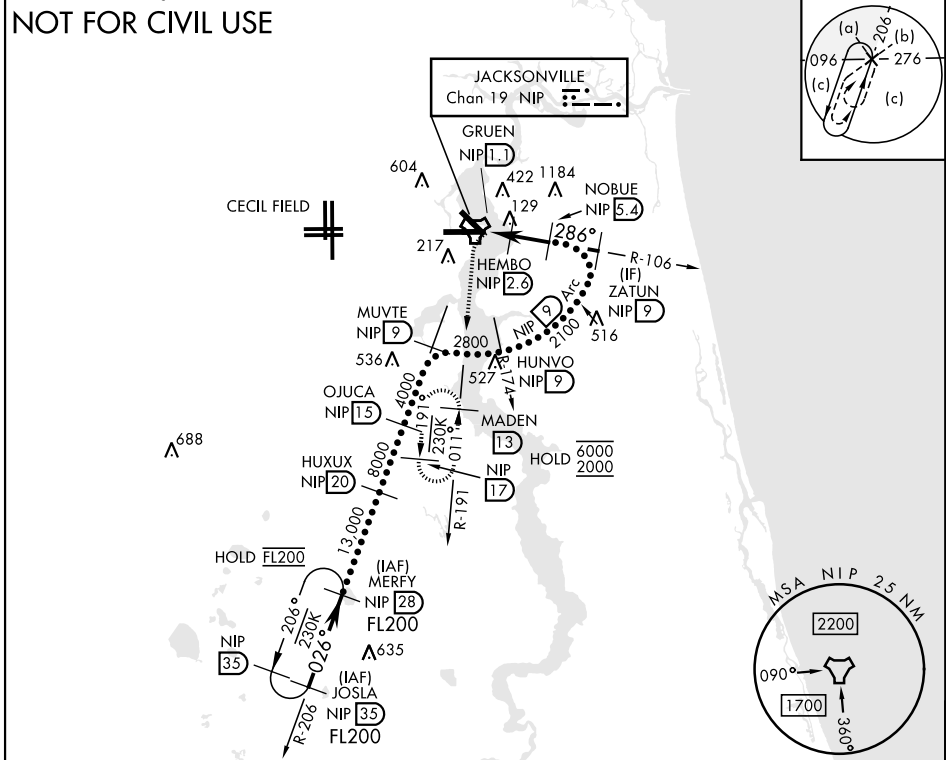
▼ * When ALS inop, increase CAT CDE vis to 1½ miles.

SALSF **A2**

MISSED APPROACH: Climb to 2000 direct NIP TACAN and turn left outbound R-191 to MADEN and hold.

ATIS 124.35 290.425	APP CON 127.775 377.075	NAVY JACKSONVILLE TOWER 125.15 (CTAF) 340.2	GND CON 128.6 336.4	CLNC DEL 134.775 0353.675	ASR/ PAR
-------------------------------	-----------------------------------	---	-------------------------------	-------------------------------------	-------------

CAUTION: Inmed seg len 3.6 NM.



EMERG SAFE ALT 100 NM 2800

ELEV	23	TDZE	13
------	----	------	----

2000	NIP	MADEN NIP 13	
NIP R-191			
NIP TACAN	HEMBO NIP 2.6	ZATUN NIP 9	
GRUEN NIP 1.1	NOBUE NIP 5.4		
700	1600	2100	
0.5	1.5 NM	2.8 NM	
CATEGORY	C	D	E
S-28*		400-7/8 387 (400-7/8)	
CIRCLING	520-1½ 497 (500-1½)	760-2¼ 737 (800-2¼)	920-3 897 (900-3)

HIRL Rwy 10-28

HI-TACAN Z RWY 28

SE-3, 16 APR 2026 to 14 MAY 2026

SE-3, 16 APR 2026 to 14 MAY 2026