

JACKSONVILLE, FLORIDA

# RNAV (RNP) Y RWY 28

|          |            |      |
|----------|------------|------|
| APCH CRS | Rwy Idg    | 9003 |
| 276°     | TDZE       | 13   |
|          | Arprt Elev | 23   |

(USN)

JACKSONVILLE NAS (TOWERS FLD) (KNIP)

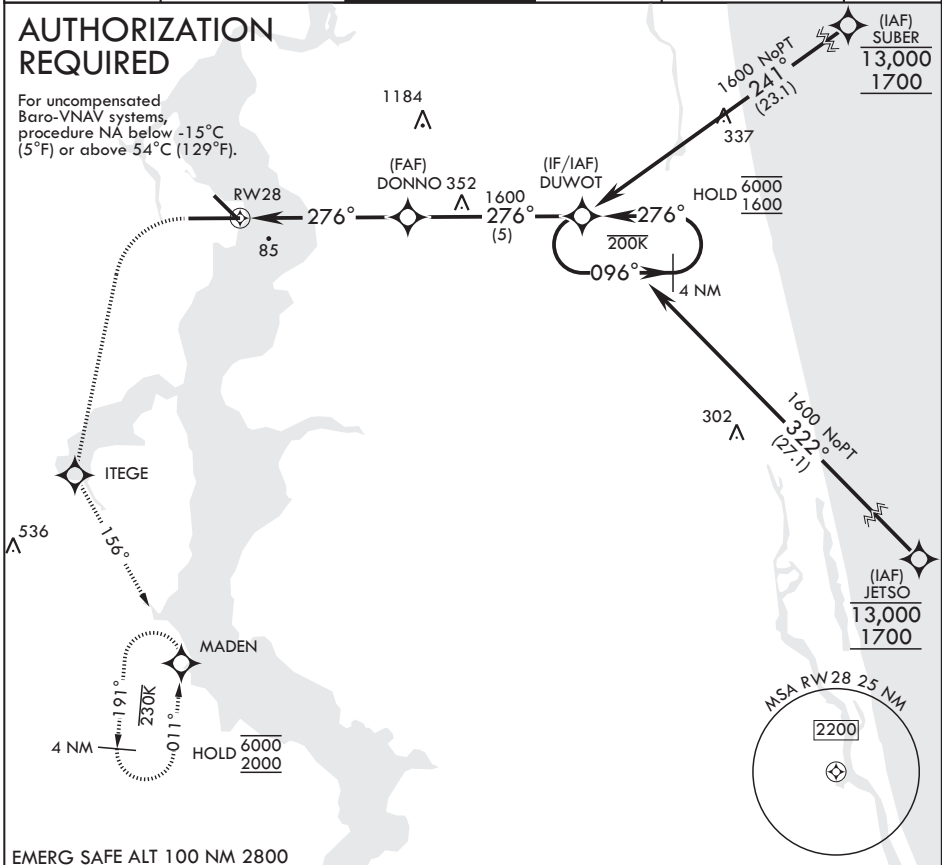
|  |       |
|--|-------|
| RNP AR APCH-GPS                            | SALSF |
| ▼ * When ALS inop, increase vis to 1 mile. |       |

MISSED APPROACH: Climb to 600 then climbing left turn to 2000 direct ITEGE, track 156° to MADEN and hold.

|                |                 |                     |             |                   |         |
|----------------|-----------------|---------------------|-------------|-------------------|---------|
| ATIS           | APP CON/DEP CON | TOWER               | GND CON     | CLNC DEL          | ASR/PAR |
| 124.35 290.425 | 127.775 377.075 | 125.15 (CTAF) 340.2 | 128.6 336.4 | 134.775 0 353.675 |         |

## AUTHORIZATION REQUIRED

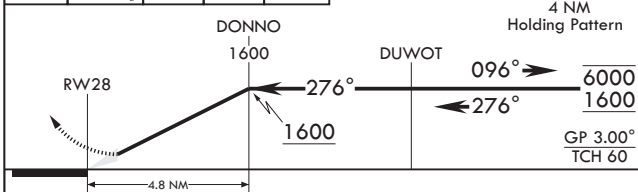
For uncompensated Baro-VNAV systems, procedure NA below -15°C (5°F) or above 54°C (129°F).



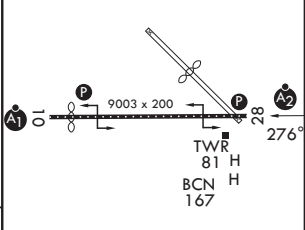
SE-3, 16 APR 2026 to 14 MAY 2026

SE-3, 16 APR 2026 to 14 MAY 2026

EMERG SAFE ALT 100 NM 2800



|         |                             |         |
|---------|-----------------------------|---------|
| ELEV 23 | See Supp for declared dist. | TDZE 13 |
|---------|-----------------------------|---------|



|              |         |     |           |   |                |
|--------------|---------|-----|-----------|---|----------------|
| CATEGORY     | A       | B   | C         | D | HIRL Rwy 10-28 |
| RNP 0.30 DA* | 356-3/4 | 343 | (400-3/4) |   |                |

JACKSONVILLE, FLORIDA

30°14'N - 81°41'W

JACKSONVILLE NAS (TOWERS FLD) (KNIP)

Amdt 2 02OCT25

# RNAV (RNP) Y RWY 28