

JACKSONVILLE, FLORIDA

# RNAV (GPS) Z RWY 10

WAAS CH 42020 W10A	APCH CRS 096°	Rwy ldg TDZE Arpt Elev	8006 21 23
--------------------------	------------------	---------------------------	------------------

(USN)

JACKSONVILLE NAS (TOWERS FLD) (KNIP)

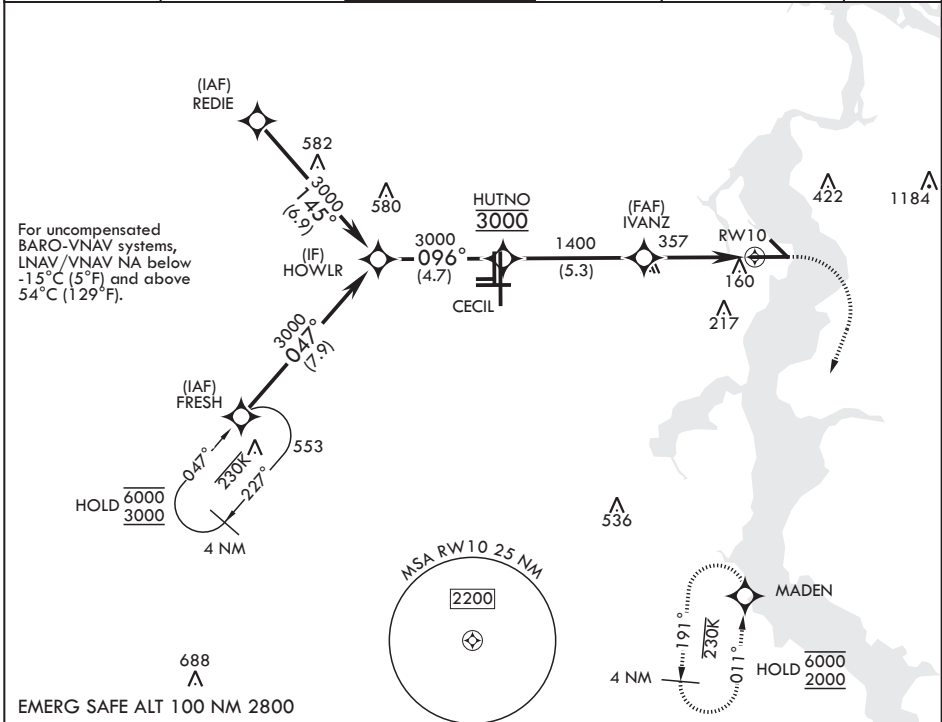
RNP APCH - GPS



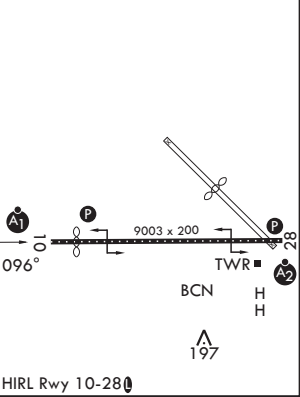
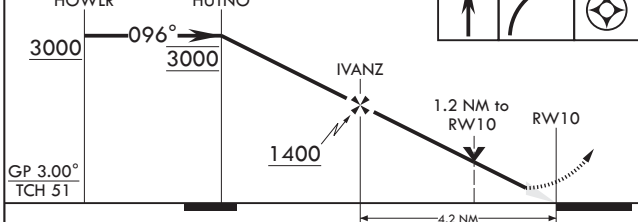
MISSED APPROACH: Climb to 600 then climbing right turn to 2000 direct MADEN and hold.

- \* When ALS inop increase CAT ABCD vis to 3/4 mile.
- \*\* When ALS inop, increase vis to 7/8 mile.
- \*\*\* When ALS inop increase CAT AB vis to 1 mile; CAT CD vis to 1 1/8 miles.

ATIS 124.35 290.425	APP CON/DEP CON 127.775 377.075	TOWER 125.15 (CTAF) 340.2	GND CON 128.6 336.4	CLNC DEL 134.775 353.675	ASR/PAR
------------------------	------------------------------------	------------------------------	------------------------	-----------------------------	---------



HOWLR	HUTNO	600	2000	MADEN	ELEV 23	See Supp for declared dist.	TDZE 21
-------	-------	-----	------	-------	---------	-----------------------------	---------



CATEGORY	A	B	C	D
LPV DA*	221-1/2		200	(200-1/2)
LNAV/VNAV DA**	291-1/2 270 (300-1/2)	302-1/2 281 (300-1/2)	310-1/2 289 (300-1/2)	321-1/2 300 (300-1/2)
LNAV MDA***	440-1/2	419 (500-1/2)	440-3/4	419 (500-3/4)
CIRCLING	500-1	477 (500-1)	520-1 1/2 497 (500-1 1/2)	760-2 1/4 737 (800-2 1/4)

JACKSONVILLE, FLORIDA  
Amdt 2 02OCT25

30°14'N - 81°41'W

JACKSONVILLE NAS (TOWERS FLD) (KNIP)

# RNAV (GPS) Z RWY 10

SE-3, 16 APR 2026 to 14 MAY 2026

SE-3, 16 APR 2026 to 14 MAY 2026