

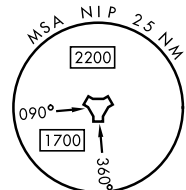
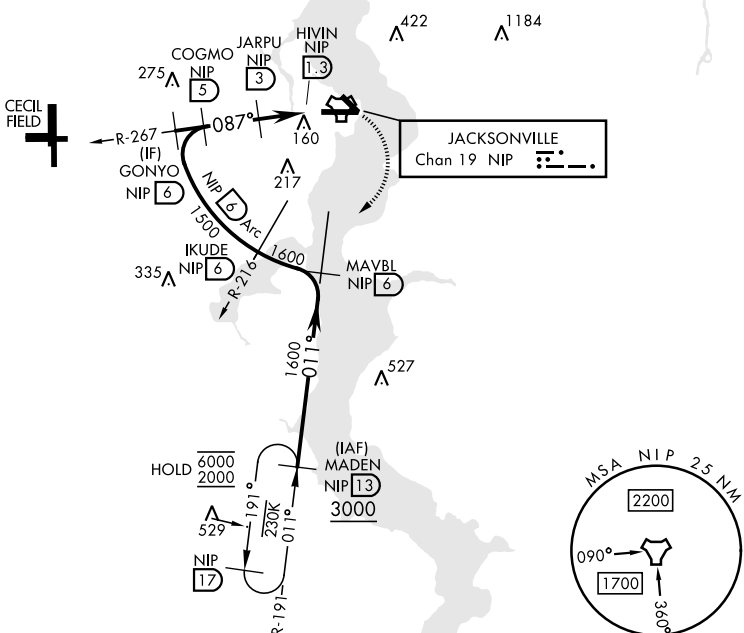
TACAN Y RWY 10

TACAN NIP Chan 19	APCH CRS 087°	Rwy Idg TDZE Arprt Elev 8006 21 23	[USN]	JACKSONVILLE NAS (TOWERS FLD) (KNIP)
--------------------------	----------------------	---	-------	--------------------------------------

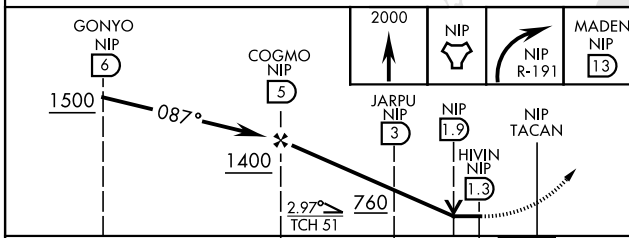
MISSED APPROACH: Climb to 2000 direct NIP TACAN and turn right outbound R-191 to MADEN and hold.

ATIS 124.35 290.425	APP CON 127.775 377.075	NAVY JACKSONVILLE TOWER 125.15 (CTAF) 340.2	GND CON 128.6 336.4	CLNC DEL 134.775 353.675	ASR/PAR
----------------------------	--------------------------------	--	----------------------------	---------------------------------	---------

- CAUTION:
1. Inmed seg len 1 NM.
 2. Initial apch arc radius 6 NM.



EMERG SAFE ALT 100 NM 2800



ELEV	23	TDZE	21
------	----	------	----

CATEGORY	A	B	C	D
S-10*	420-1/2	399 (400-1/2)	420-3/4	399 (400-3/4)
CIRCLING	500-1	477 (500-1)	520-1 1/2 497 (500-1 1/2)	760-2 1/4 737 (800-2 1/4)

HIRL Rwy 10-28

TACAN Y RWY 10

SE-3, 16 APR 2026 to 14 MAY 2026

SE-3, 16 APR 2026 to 14 MAY 2026