

# TACAN Y RWY 28

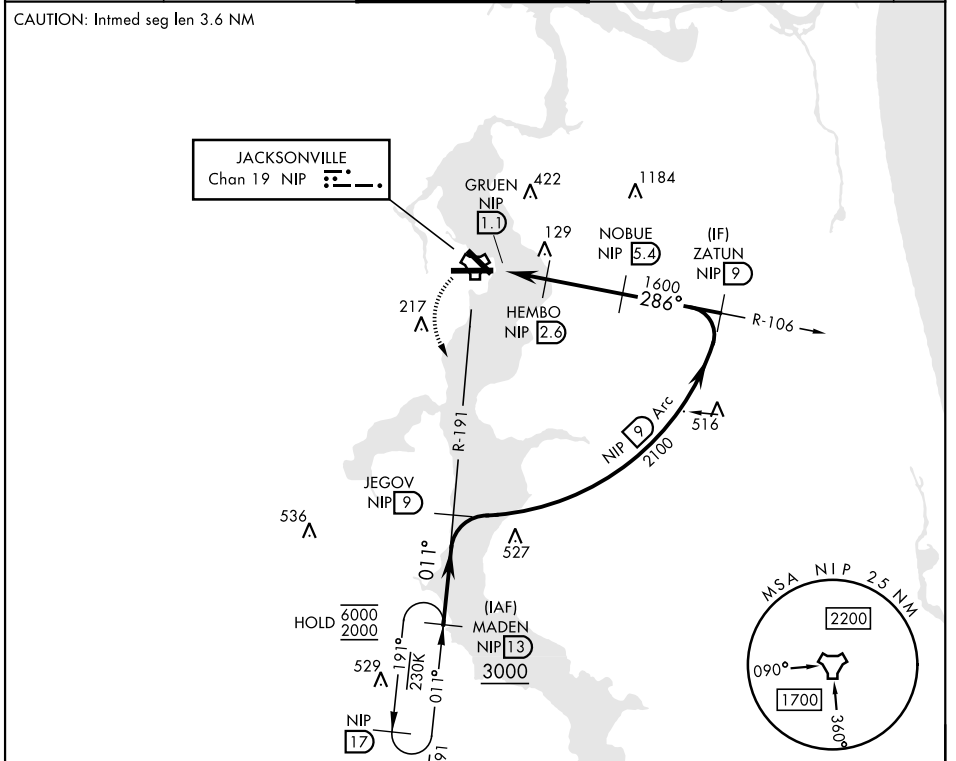
TACAN NIP Chan <b>19</b>	APCH CRS <b>286°</b>	Rwy Ildg TDZE Arpt Elev <b>9003 13 23</b>
--------------------------	----------------------	---

[USN]

JACKSONVILLE NAS (TOWERS FLD) (KNIP)

<p>▼ *When ALS inop, increase CAT AB vis to 1 mile, CAT CD vis to 1½ miles.</p>	<p>SALSF </p>	<p>MISSED APPROACH: Climb to 2000 direct NIP TACAN and turn left outbound R-191 to MADEN and hold.</p>
---	---------------	--

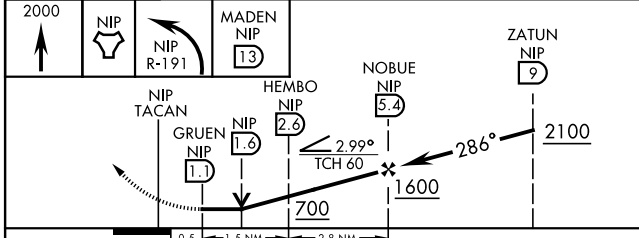
<p>ATIS <b>124.35 290.425</b></p>	<p>APP CON <b>127.775 377.075</b></p>	<p>NAVY JACKSONVILLE TOWER <b>125.15 (CTAF) 340.2</b></p>	<p>GND CON <b>128.6 336.4</b></p>	<p>CLNC DEL <b>134.775 353.675</b></p>	<p>ASR/PAR</p>
-----------------------------------	---------------------------------------	---	-----------------------------------	--	----------------



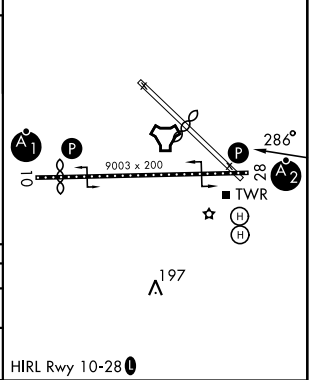
SE-3, 16 APR 2026 to 14 MAY 2026

SE-3, 16 APR 2026 to 14 MAY 2026

EMERG SAFE ALT 100 NM 2800



ELEV	23	TDZE	13
------	----	------	----



CATEGORY	A		B		C		D	
S-28*	400-¾	387 (400-¾)	400-⅞	387 (400-⅞)				
CIRCLING	500-1	477 (500-1)	520-1½	497 (500-1½)	760-2¼	737 (800-2¼)		

HIRL Rwy 10-28

# TACAN Y RWY 28