

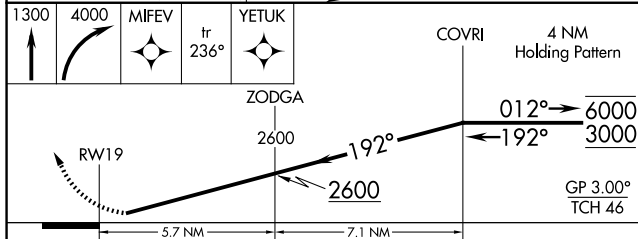
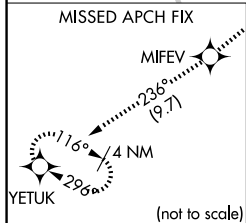
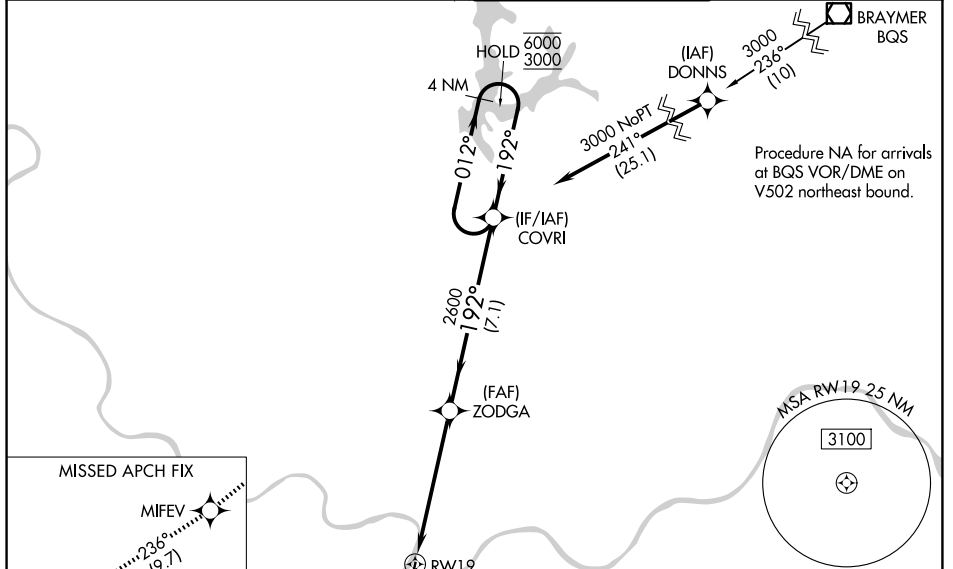
WAAS CH 90320 W19A	APP CRS 192°	Rwy Ldg TDZE Apt Elev	6526 754 757
--	------------------------	-----------------------------	---

RNAV (GPS) Z RWY 19

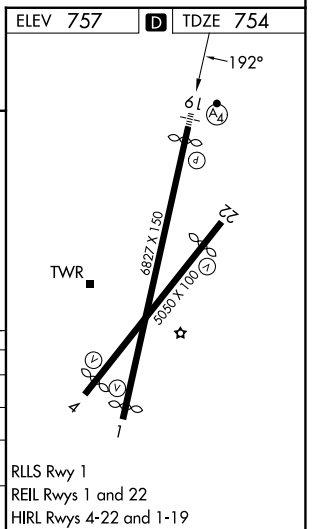
KANSAS CITY DOWNTOWN/WHEELER FLD (MKC)

RNP APCH - GPS.	MALSF ④	MISSED APPROACH: Climb to 1300 then climbing right turn to 4000 direct MIFEV and on track 236° to YETUK and hold. * Missed approach requires minimum climb of 300 feet per NM to 1500. # Missed approach requires minimum climb of 360 feet per NM to 2400.
For uncompensated Baro-VNAV systems, LNAV/VNAV NA below -19°C or above 54°C. Rwy 19 helicopter visibility reduction below RVR 4000 NA. For inop ALS, increase LPV* visibility all Cats to RVR 4500, and LPV visibility all Cats to RVR 5500.		

ATIS 120.75	KANSAS CITY APP CON 118.4 307.35	DOWNTOWN TOWER 133.3 233.7	GND CON 121.9
-----------------------	--	--------------------------------------	-------------------------



CATEGORY	A	B	C	D
LPV DA*		1021/40	267 (300-¾)	
LPV DA		1097/40	343 (400-¾)	
LNAV/VNAV DA#		1077/40	323 (400-¾)	
LNAV/VNAV DA		1468-1¾	714 (800-1¾)	



NC-3, 16 APR 2026 to 14 MAY 2026

NC-3, 16 APR 2026 to 14 MAY 2026