

# BOCA SIX DEPARTURE (OBSTACLE) (NQX6.NQX)

KEY WEST NAS (BOCA CHICA FLD) (KNQX)

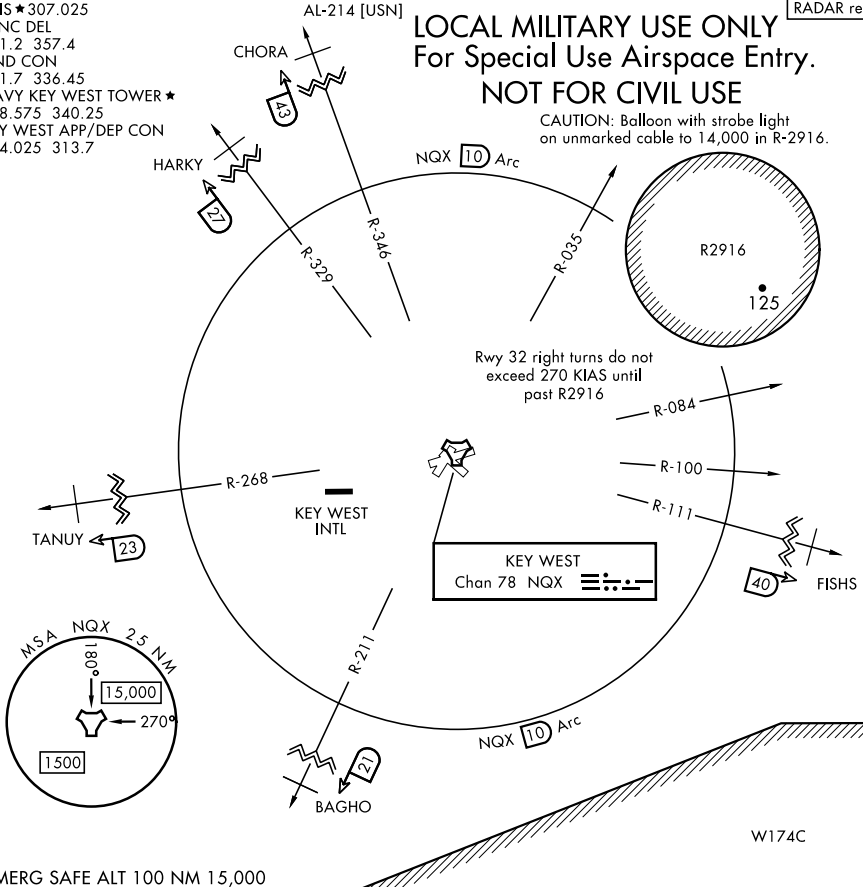
KEY WEST, FLORIDA

RADAR required

ATIS ★ 307.025  
 CLNC DEL  
 121.2 357.4  
 GND CON  
 121.7 336.45  
 NAVY KEY WEST TOWER ★  
 118.575 340.25  
 KEY WEST APP/DEP CON  
 124.025 313.7

**LOCAL MILITARY USE ONLY**  
**For Special Use Airspace Entry.**  
**NOT FOR CIVIL USE**

CAUTION: Balloon with strobe light on unmarked cable to 14,000 in R-2916.



SE-3, 16 APR 2026 to 14 MAY 2026

SE-3, 16 APR 2026 to 14 MAY 2026

EMERG SAFE ALT 100 NM 15,000



## DEPARTURE ROUTE DESCRIPTION

TAKEOFF RWY 4, 8, 14, 22, 26, 32: Climbing via assigned heading, thence radar vectors to assigned departure fix. Cross 10 DME at or above 10,000, cross departure fix as assigned by ATC.

## LOST COMMUNICATIONS/NON-RADAR

If radar vectors are not received or available by NQX TACAN 8 DME, climb to 12,000, fly assigned departure heading to intercept NQX 10 DME arc. Arc to respective departure radial, then via departure radial to assigned departure fix.  
Do not ARC northeast of NQX TACAN between R-035 clockwise to R-084.

# BOCA SIX DEPARTURE (OBSTACLE) (NQX6.NQX)

Orig 23FEB23

KEY WEST, FLORIDA

KEY WEST NAS (BOCA CHICA FLD) (KNQX)