

HI-TACAN X RWY 8

TACAN NQX Chan 78	APCH CRS 072°	Rwy ldg TDZE Arprt Elev 10,001 4 6
-----------------------------	-------------------------	--

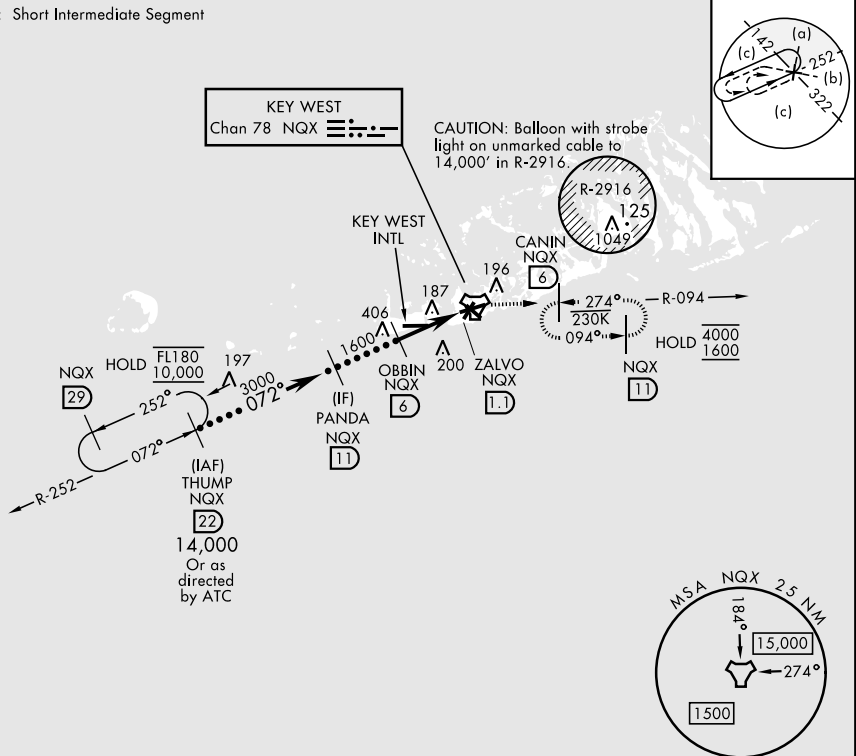
[USN]

KEY WEST NAS (BOCA CHICA FLD) (KNQX)

RADAR required		ALSF-1 	MISSED APPROACH: Climb to 1600 via R-252 to NQX TACAN then via R-094 to CANIN (NQX R-094/6 DME) and hold.
* When ALS inop, increase vis to 1 1/4 miles.			

ATIS * 307.025	NAVY KEY WEST APP CON 124.025 313.7	NAVY KEY WEST TOWER * 118.575 340.25	GND CON 121.7 336.45	CLNC DEL 121.2 357.4	ASR/PAR
--------------------------	---	--	--------------------------------	--------------------------------	---------

CAUTION: Short Intermediate Segment



EMERG SAFE ALT 100 NM 15,000

THUMP NQX 22	PANDA NQX 11	Obbin NQX 6	NQX 2.3	NQX TACAN	Zalvo NQX 1.1	ELEV 6	TDZE 4
14,000	Or as directed by ATC	3000	1600	2.97° TCH 44	4.9 NM	1600 NQX R-252	NQX R-094
CATEGORY	C		D		E		
S-8 *	440-3/4		436	(500-3/4)			
CIRCLING	500-1 1/2 494 (500-1 1/2)		560-2	554	(600-2)	HIRL all rwys	

KEY WEST, FLORIDA

24°34'N-81°41'W

KEY WEST NAS (BOCA CHICA FLD) (KNQX)

Amdt 4 23FEB23

HI-TACAN X RWY 8

SE-3, 16 APR 2026 to 14 MAY 2026

SE-3, 16 APR 2026 to 14 MAY 2026