

# HI-TACAN Z RWY 32

TACAN	NQX	APCH CRS	Rwy ldg TDZE	7000
Chan	78	335°	Arprt Elev	4
				6

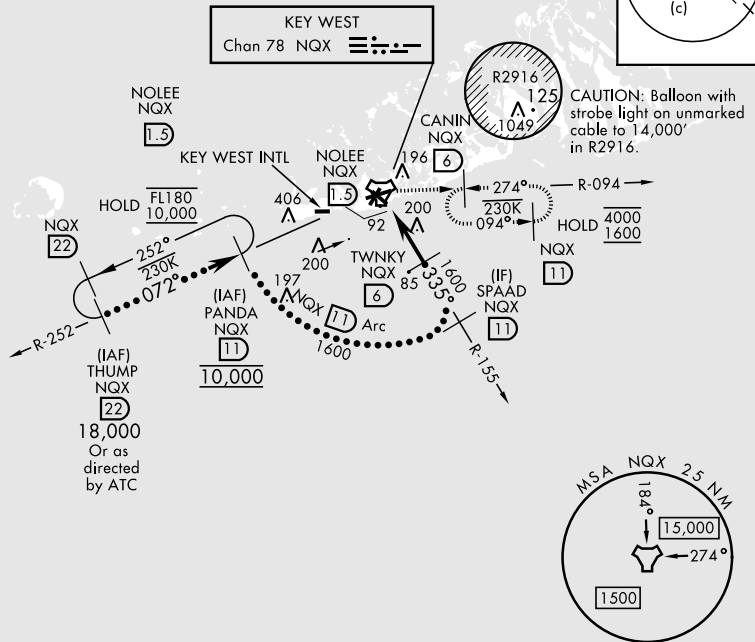
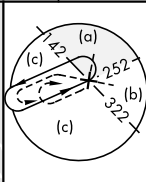
[USN]

KEY WEST NAS (BOCA CHICA FLD) (KNQX)

RADAR required	MISSED APPROACH: Climb to 1600 via NQX TACAN R-155 to NQX, then climbing right turn to CANIN and hold.
----------------	--

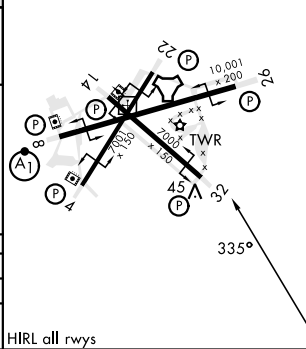
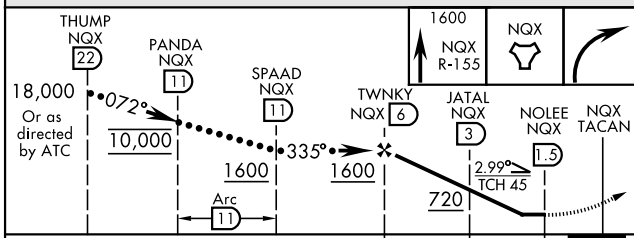
ATIS ★ 307.025	NAVY KEY WEST APP CON 124.025 313.7	NAVY KEY WEST TOWER ★ 118.575 340.25	GND CON 121.7 336.45	CLNC DEL 121.2 357.4	ASR/PAR
-------------------	--	---	-------------------------	-------------------------	---------

CAUTION: Short Intermediate Segment



EMERG SAFE ALT 100 NM 15,000

ELEV	6	TDZE	4
------	---	------	---



CATEGORY	C	D	E
S-32	360-1	356	(400-1)
CIRCLING	500-1½ 494 (500-1½)	560-2	554 (600-2)

KEY WEST, FLORIDA 24°34'N-81°41'W KEY WEST NAS (BOCA CHICA FLD) (KNQX)

Amdt 4 23FEB23

# HI-TACAN Z RWY 32

SE-3, 16 APR 2026 to 14 MAY 2026

SE-3, 16 APR 2026 to 14 MAY 2026