

KEY WEST, FLORIDA

RNAV (GPS) RWY 8

WAAS CH 65107 W08A	APCH CRS 079°	Rwy ldg TDZE 10,001 4	Arprt Elev 6
--------------------------	------------------	-----------------------------	-----------------

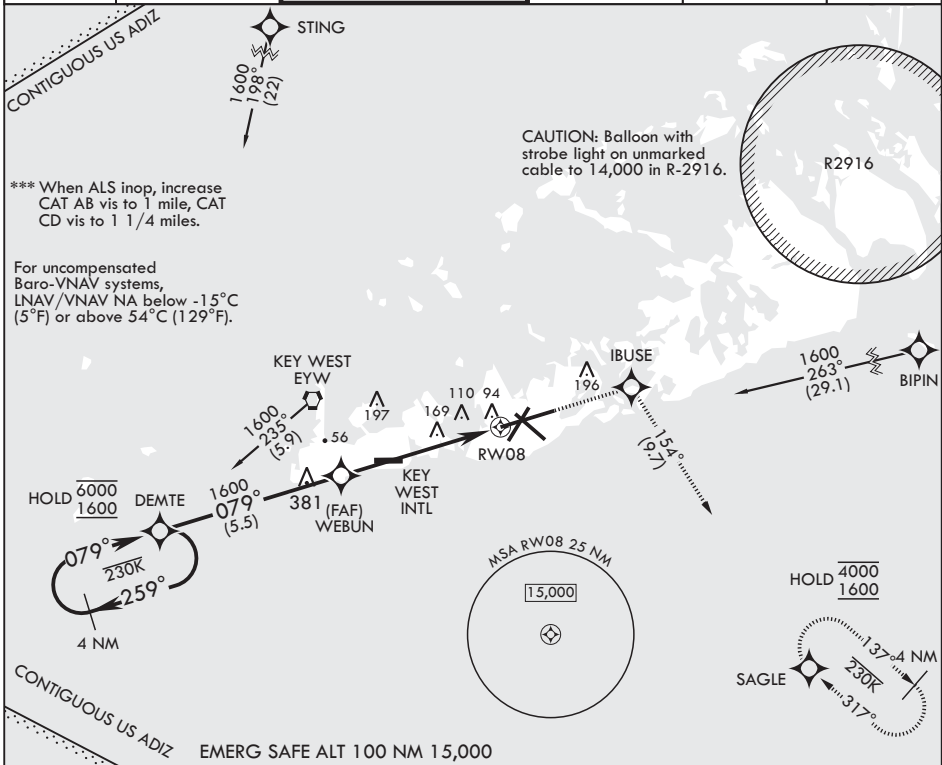
- (USN)

KEY WEST NAS (BOCA CHICA FLD) (KNQX)

RNP APCH
 * When ALS inop, increase vis to 3/4 mile.
 ** When ALS inop, increase vis to 1 1/4 miles.

ALSF-1 MISSED APPROACH: (Do not exceed 230 KIAS until IBUSE) Climb to 1600 direct IBUSE, track 154° to SAGLE and hold.

ATIS* 307.025	APP CON 124.025 313.7	NAVY KEY WEST TOWER* 118.575 340.25	GND CON 121.7 336.45	CLNC DEL 121.2 357.4	ASR/PAR
------------------	--------------------------	--	-------------------------	-------------------------	---------



SE-3, 16 APR 2026 to 14 MAY 2026

SE-3, 16 APR 2026 to 14 MAY 2026

4 NM Holding Pattern	1600	IBUSE	tr 154°	ELEV 6	TDZE 4
----------------------	------	-------	---------	--------	--------

DEMOTE Holding Pattern: 6000/1600, 259°/079°

WEBUN Holding Pattern: 1600, 1.2 NM to RW08, 4.9 NM

CATEGORY	A	B	C	D
LPV DA*	204-1/2	200	(200-1/2)	
LNAV/VNAV DA**	427-3/4	423	(500-3/4)	
LNAV MDA***	440-1/2 436 (500-1/2)	440-3/4 436 (500-3/4)		
CIRCLING	440-1	500-1	500-1 1/2	560-2
	434 (500-1)	494 (500-1)	494 (500-1 1/2)	554 (600-2)

HIRL all rwys

BCN TWR: 127, 22, 14, 10, 7, 4, 2, 1, 0.7, 0.5, 0.3, 0.2, 0.1, 0.05, 0.02, 0.01

KEY WEST, FLORIDA
Amdt 3 23FEB23

24°34'N - 81°41'W

KEY WEST NAS (BOCA CHICA FLD) (KNQX)

RNAV (GPS) RWY 8