

KEY WEST, FLORIDA

TACAN Y RWY 8

TACAN NQX Chan 78	APCH CRS 072°	Rwy ldg TDZE Arprt Elev	10,001 4 6
-----------------------------	-------------------------	-------------------------------	---------------------------------------

[USN]

KEY WEST NAS (BOCA CHICA FLD) (KNQX)

▼ * When ALS inop, increase CAT AB vis to 1 mile, CAT CD vis to 1¼ miles.

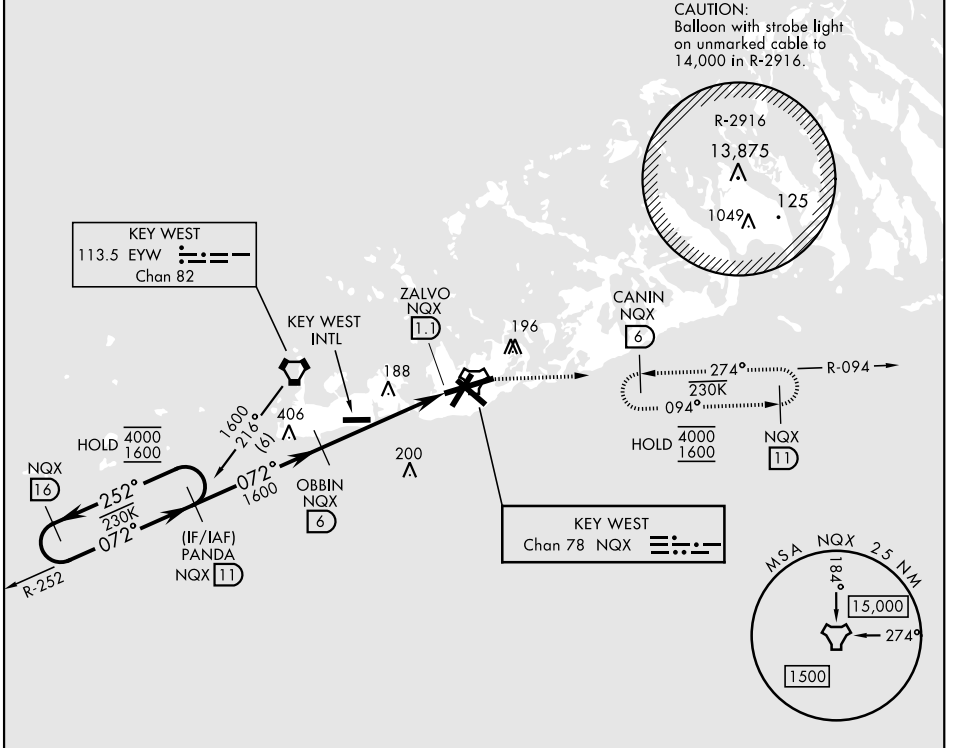
ALS-F-1 

MISSED APPROACH: Climb to 1600 via R-252 to NQX TACAN then via R-094 to CANIN (NQX R-094/6 DME) and hold.

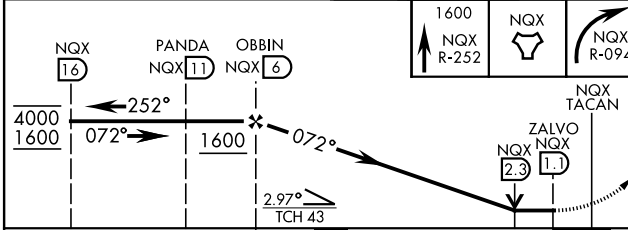
ATIS ★ 307.025	NAVY KEY WEST APP CON 124.025 313.7	NAVY KEY WEST TOWER ★ 118.575 340.25	GND CON 121.7 336.45	CLNC DEL 121.2 357.4	ASR/PAR
--------------------------	-----------------------------------------------	------------------------------------------------	--------------------------------	--------------------------------	---------

CAUTION: Short Intermediate Segment

CAUTION:
Balloon with strobe light
on unmarked cable to
14,000 in R-2916.

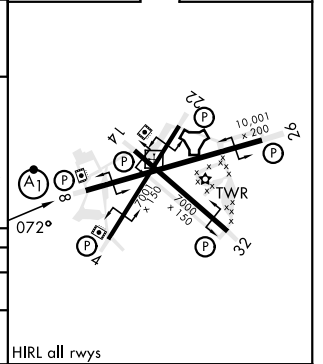


EMERG SAFE ALT 100 NM 15,000



ELEV	6	TDZE	4
------	---	------	---

CATEGORY	A	B	C	D
S-8 *	440-½ 436	(500-½)	440-¾ 436	(500-¾)
CIRCLING	440-1 434 (500-1)	500-1 494 (500-1)	500-1½ 494 (500-1½)	560-2 554 (600-2)



KEY WEST, FLORIDA 24°34'N-81°41'W KEY WEST NAS (BOCA CHICA FLD) (KNQX)

Amtd 4 23FEB23

TACAN Y RWY 8

SE-3, 16 APR 2026 to 14 MAY 2026

SE-3, 16 APR 2026 to 14 MAY 2026