

KEY WEST, FLORIDA

# VOR/DME or TACAN Z RWY 8

EYW VORTAC <b>113.5</b> Chan <b>82</b>	APCH CRS <b>098°</b>	Rwy Idg TDZE Arprt Elev	<b>10,001</b> <b>4</b> <b>6</b>
----------------------------------------------	-------------------------	-------------------------------	---------------------------------------

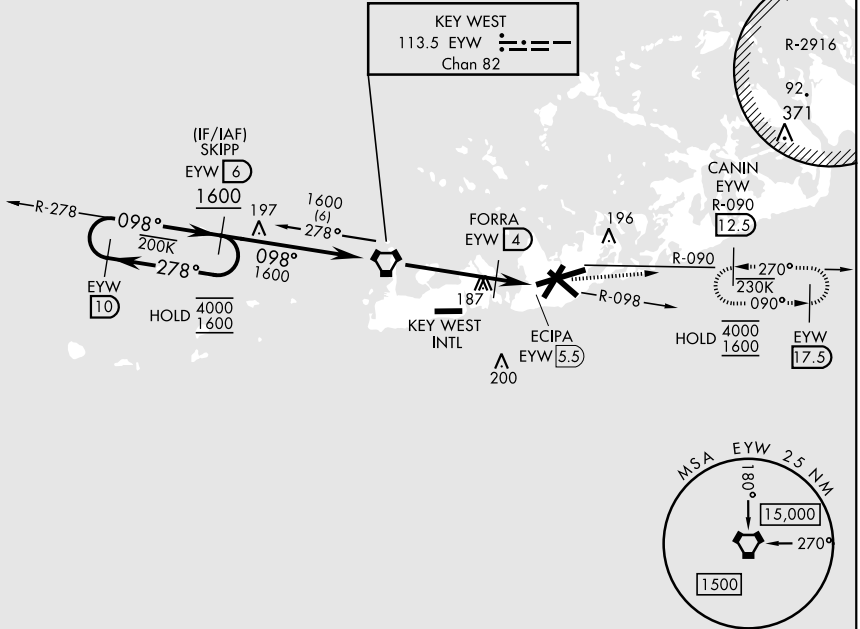
[USN]

KEY WEST NAS (BOCA CHICA FLD) (KNQX)

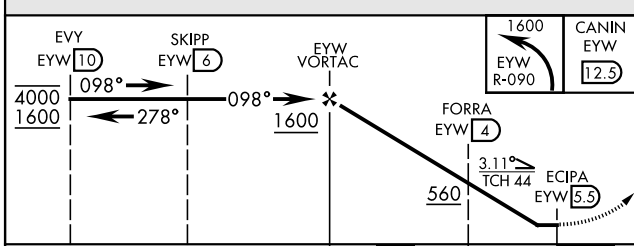
ALSF-1 MISSED APPROACH: Climbing left turn to 1600 to intercept EYW R-090 to CANIN and hold.

ATIS ★ <b>307.025</b>	NAVY KEY WEST APP CON <b>124.025 313.7</b>	NAVY KEY WEST TOWER ★ <b>118.575 340.25</b>	GND CON <b>121.7 336.45</b>	CLNC DEL <b>121.2 357.4</b>	ASR/PAR
--------------------------	-----------------------------------------------	------------------------------------------------	--------------------------------	--------------------------------	---------

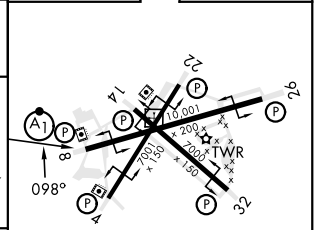
CAUTION:  
Balloon with strobe light on unmarked cable to 14,000 in R-2916.



EMERG SAFE ALT 100 NM 15,000



ELEV	6	TDZE	4
------	---	------	---



CATEGORY	A	B	C	D
S-8	440-1 436 (500-1)		440-1 ¼ 436 (500-1 ¼)	
CIRCLING	440-1 434 (500-1)	500-1 494 (500-1)	500-1 ½ 494 (500-1 ½)	560-2 554 (600-2)

HIRL all rwys

KEY WEST, FLORIDA  
Amdt 4 23FEB23

24°34'N-81°41'W KEY WEST NAS (BOCA CHICA FLD) (KNQX)

# VOR/DME or TACAN Z RWY 8

SE-3, 16 APR 2026 to 14 MAY 2026

SE-3, 16 APR 2026 to 14 MAY 2026