

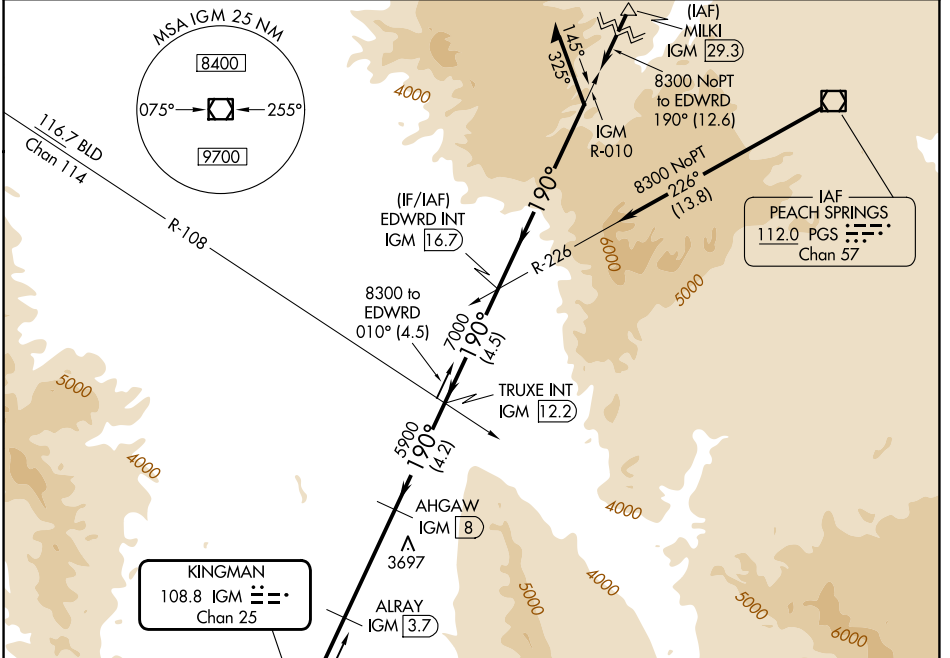
VOR/DME IGM 108.8 Chan 25	APP CRS 190°	Rwy Ldg TDZE 6827 3403 Apt Elev 3449
--	------------------------	---

VOR/DME RWY 21

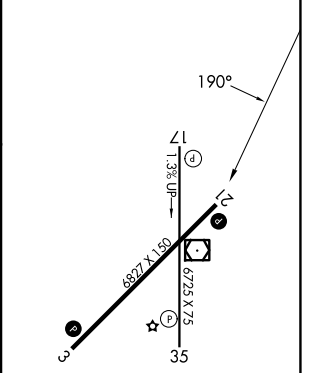
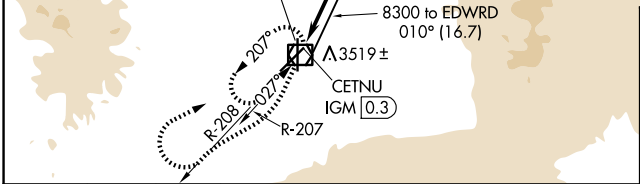
KINGMAN (IGM)

⚠ Circling Rwy 35 NA at night. **⚠** MISSED APPROACH: Climbing right turn to 6000 via IGM VOR/DME R-208 then climbing right turn to 9000 direct IGM VOR/DME and hold.

ASOS 119.275	LOS ANGELES CENTER 124.85 319.2	UNICOM 122.8 (CTAF) 📻
------------------------	---	--



ELEV 3449	D TDZE 3403
-----------	--------------------



6000 IGM R-208	9000 IGM []	IGM []	TRUXE INT IGM [12.2]	EDWRD INT IGM [16.7]	Remain within 10 NM
CETNU IGM [0.3]	ALRAY IGM [3.7]	AHGAW IGM [8]	010° 8300	190° 8300	190° 8300
4540	5900	7000	3.4 NM	4.3 NM	4.2 NM

CATEGORY	A	B	C	D
S-21	3880-1	477 (500-1)	3880-1¼ 477 (500-1¼)	3880-1½ 477 (500-1½)
CIRCLING	3980-1 531 (600-1)	4100-1 651 (700-1)	4420-3 971 (1000-3)	5340-3 1891 (2000-3)

MIRL Rwy 3-21 and 17-35 **📻**
REIL Rwy 3 and 21 **📻**

SW-4, 16 APR 2026 to 14 MAY 2026

SW-4, 16 APR 2026 to 14 MAY 2026