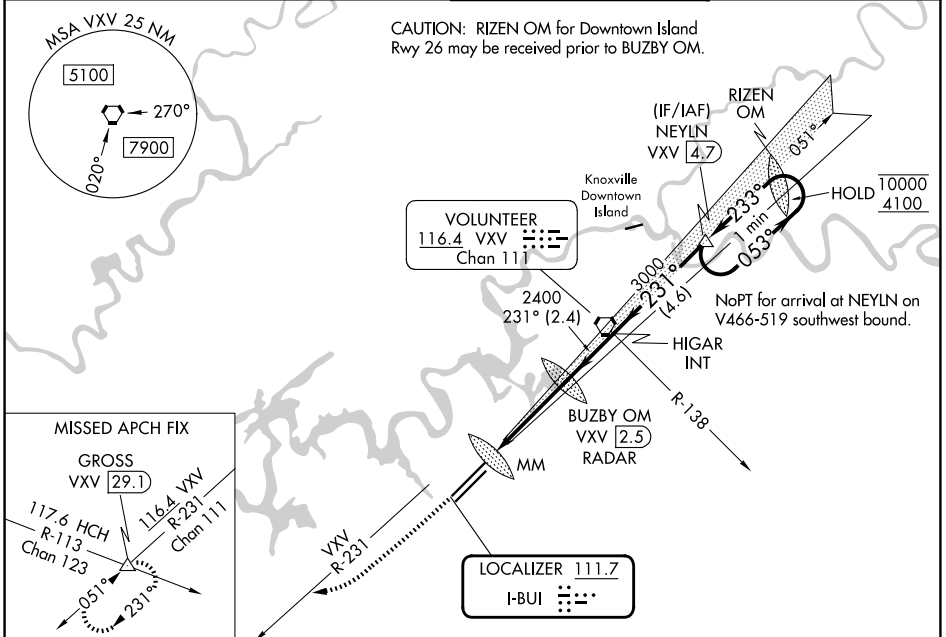


LOC I-BUI <b>111.7</b>	APP CRS <b>231°</b>	Rwy Ldg TDZE <b>984</b>	Apt Elev <b>986</b>
---------------------------	------------------------	----------------------------	------------------------

# ILS RWY 23R (CAT II)

MC GHEE TYSON (TYS)

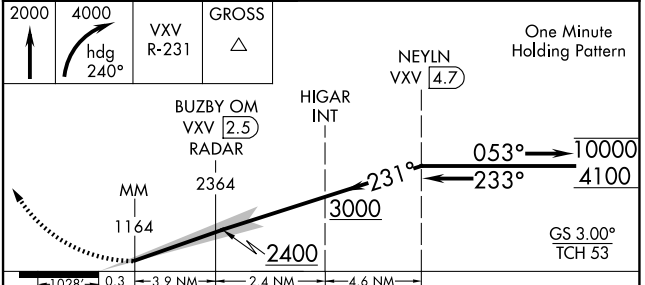
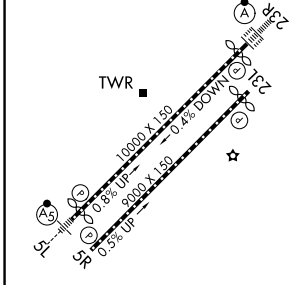
DME or RADAR required.		ALS F-2	MISSED APPROACH: Climb to 2000 then climbing right turn to 4000 on heading 240° and VXV VORTAC R-231 to GROSS INT/VXV 29.1 DME and hold.
ATIS <b>128.35</b>	KNOXVILLE APP CON <b>123.9 360.8</b>	KNOXVILLE TOWER <b>121.2 257.8</b>	GND CON <b>121.9 348.6</b>



SE-1, 16 APR 2026 to 14 MAY 2026

SE-1, 16 APR 2026 to 14 MAY 2026

ELEV 986	<b>D</b>	TDZE 984
----------	----------	----------



CATEGORY	A	B	C	D
S-ILS 23R	RA 103/12		100 DA 1084	

**CATEGORY II ILS - SPECIAL AIRCREW & AIRCRAFT CERTIFICATION REQUIRED**

REIL Rwy 5R and 23L  
TDZL/RCLS Rwy 23R  
HIRL Rwy 5L-23R and 5R-23L