

WAAS CH <b>86509</b> <b>W36A</b>	APP CRS <b>360°</b>	Rwy Ldg TDZE <b>653</b> Apt Elev <b>656</b>	<b>7433</b>
--	------------------------	---	-------------

# RNAV (GPS) RWY 36

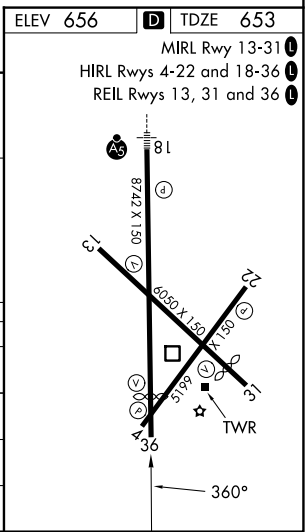
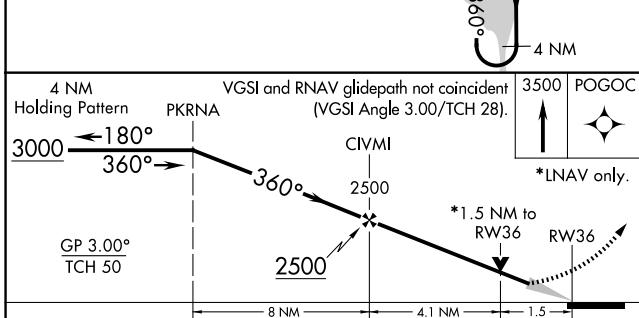
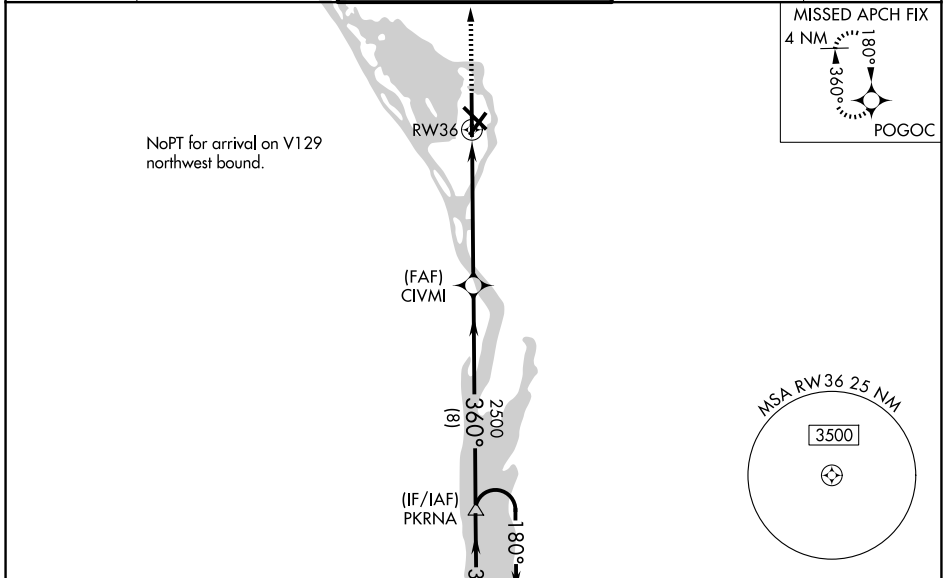
LA CROSSE RGNL (LSE)

RNP APCH.

⚠ For uncompensated Baro-VNAV systems, LNAV/VNAV NA below -27° C or above 54° C. When local altimeter setting not received, use Winona altimeter setting; increase LPV DA to 1006 feet, LNAV/VNAV DA to 1256 feet and all MDA 60 feet. Increase LPV all Cats visibility ¼ SM, LNAV/VNAV all Cats visibility ¼ SM, LNAV Cats C/D visibility ¼ SM and Circling Cat C visibility ¼ SM. Circling to Rwy 22 NA at night. Baro-VNAV and VDP NA when using Winona altimeter setting.

MISSED APPROACH:  
Climb to 3500 direct POGOC and hold.

ATIS <b>124.95</b>	MINNEAPOLIS CENTER <b>128.6 363.0</b>	LA CROSSE TOWER ★ <b>118.45 (CTAF) 251.075</b>	GND CON <b>121.8</b>	UNICOM <b>122.95</b>
-----------------------	--	---	-------------------------	-------------------------



CATEGORY	A	B	C	D
LPV DA	953-1 300 (300-1)			
LNAV/VNAV DA	1203-2 550 (600-2)			
LNAV MDA	1140-1	487 (500-1)	1140-1½ 487 (500-1¼)	1140-1½ 487 (500-1½)
CIRCLING	1140-1 484 (500-1)	1460-1 804 (900-1)	1760-3 1104 (1200-3)	1820-3 1164 (1200-3)

EC-3, 16 APR 2026 to 14 MAY 2026

EC-3, 16 APR 2026 to 14 MAY 2026