


WAAS Ch 45902 W10A	APP CRS 100°	Rwy Ldg TDZE Apt Elev 600 601 606
--	------------------------	---

RNAV (GPS) RWY 10

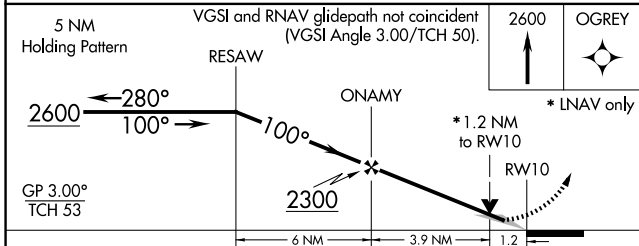
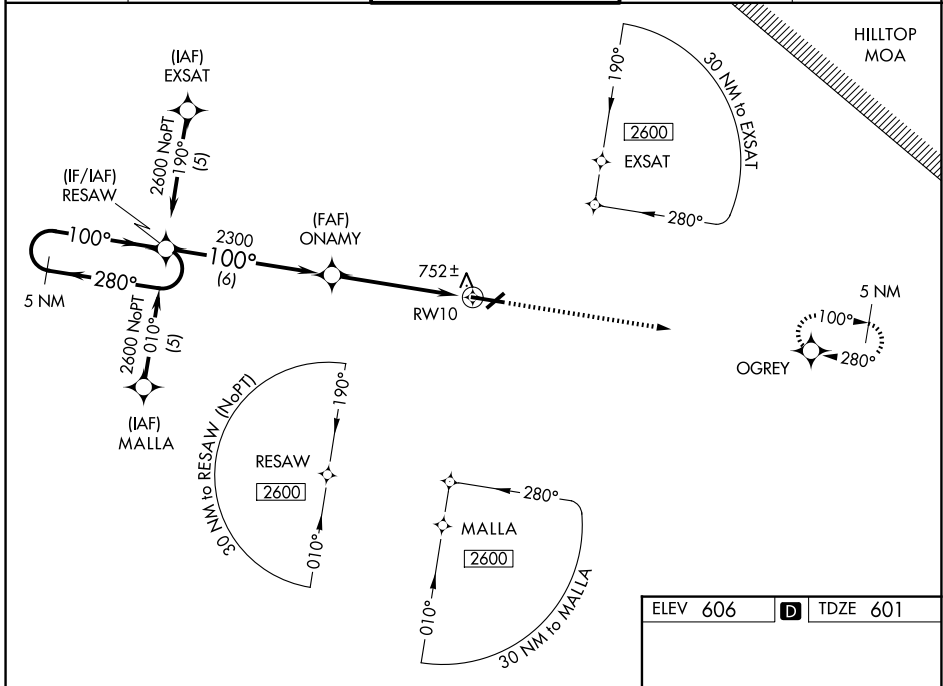
PURDUE UNIVERSITY (LAF)

When local altimeter setting not received, use Vermilion Rgnl altimeter setting and increase LPV DA to 966 feet and visibility all Cats 1/8 SM; increase LNAV/VNAV DA to 1172 feet; increase all MDAs 100 feet and LNAV Cats C/D visibility 1/4 SM, increase Circling Cat C visibility 1/2 SM and Cat D visibility 1/4 SM. Baro-VNAV NA when using Vermilion Rgnl altimeter setting. VDP NA when using Vermilion Rgnl altimeter setting. For uncompensated Baro-VNAV systems, LNAV/VNAV NA below -16°C (4°F) or above 47°C (116°F). For inoperative MALSR, increase LPV all Cats visibility to 1 mile. DME/DME RNP-0.3 NA. Circling Rwy 23 NA at night.

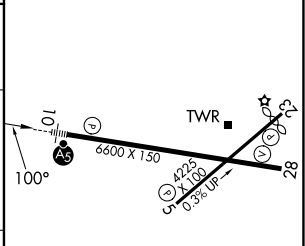
MALSR 

MISSED APPROACH:
Climb to 2600 direct OGREY and hold.




ATIS 127.75	GRISSOM APP CON* 123.85 291.675	LAFAYETTE TOWER* 119.6 (CTAF) 0 343.625	GND CON 121.9 343.625	UNICOM 122.95
-----------------------	---	---	---------------------------------	-------------------------



ELEV 606	D TDZE 601
----------	-------------------



CATEGORY	A	B	C	D
LPV DA	877-1/2 276 (300-1/2)			
LNAV/VNAV DA	1083-1 1/4 482 (500-1 1/4)			
LNAV MDA	1040-1/2 439 (500-1/2)	1040-3/4 439 (500-3/4)		1040-1 439 (500-1)
CIRCLING	1160-1 554 (600-1)	1320-2 714 (800-2)	1420-2 3/4 814 (900-2 3/4)	

HIRL Rwy 10-28 
 REIL Rwy 5, 23 and 28 
 MRL Rwy 5-23 

EC-2, 16 APR 2026 to 14 MAY 2026

EC-2, 16 APR 2026 to 14 MAY 2026