

WAAS CH 93813 W26A	APP CRS 261°	Rwy Idg 6849 TDZE 4188 Apt Elev 4229
----------------------------------------	------------------------	-----------------------------------------------------------------

RNAV (GPS) RWY 26

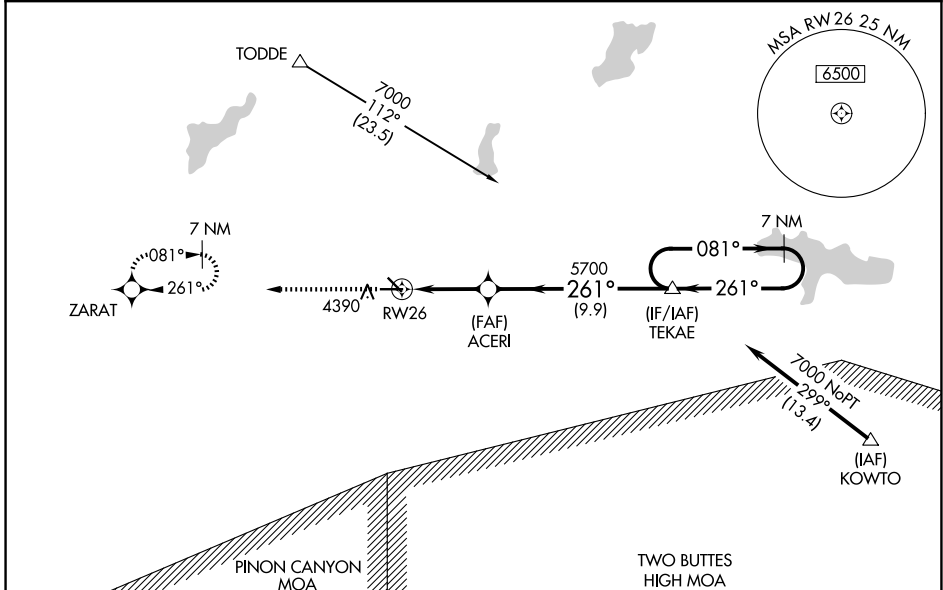
LA JUNTA MUNI (LHX)

RNP APCH - GPS.

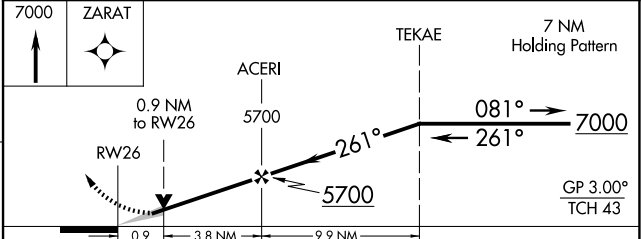
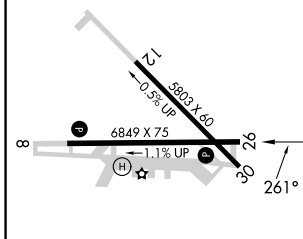
⚠ For uncompensated Baro-VNAV systems, LNAV/VNAV NA below -23°C or above 40°C. Baro-VNAV and VDP NA when using Lamar altimeter setting. When local altimeter setting not received, use Lamar altimeter setting; increase LPV and LNAV/VNAV DAs to 4604 feet and all visibilities ¾ SM; increase all MDAs 180 feet and visibility LNAV Cats C and D ½ SM and Circling Cat C ½ SM and Cat D ¾ SM. Circling Rwy 12, 30 NA at night.

MISSED APPROACH:
Climb to 7000 direct ZARAT and hold.

ASOS 135.525	DENVER CENTER 128.375 379.95	UNICOM 123.0 (CTAF) 0
------------------------	----------------------------------------	---------------------------------



ELEV 4229	TDZE 4188
------------------	------------------



CATEGORY	A	B	C	D
LPV DA		4438-¾	250 (300-¾)	
LNAV/VNAV DA		4438-¾	250 (300-¾)	
LNAV MDA	4480-1	292 (300-1)	4480-7/8	292 (300-7/8)
CIRCLING	4740-1	511 (600-1)	4740-1½ 511 (600-1½)	4860-2 631 (700-2)

REIL Rws 8 and 26 **0**
MIRL Rws 8-26 **0**

LA JUNTA, COLORADO
Amdt 1B 06OCT22

38°03'N-103°31'W

RNAV (GPS) RWY 26

SW-1, 16 APR 2026 to 14 MAY 2026