

# NDB RWY 24

LAKEHURST MAXFIELD FLD,  
(JOINT BASE MC GUIRE DIX LAKEHURST) (KNEL)

NDB NEL <b>396</b>	APCH CRS <b>241°</b>	Rwy Ldg <b>5002</b>
		TDZE <b>101</b>
		Arpt Elev <b>101</b>

[USN]

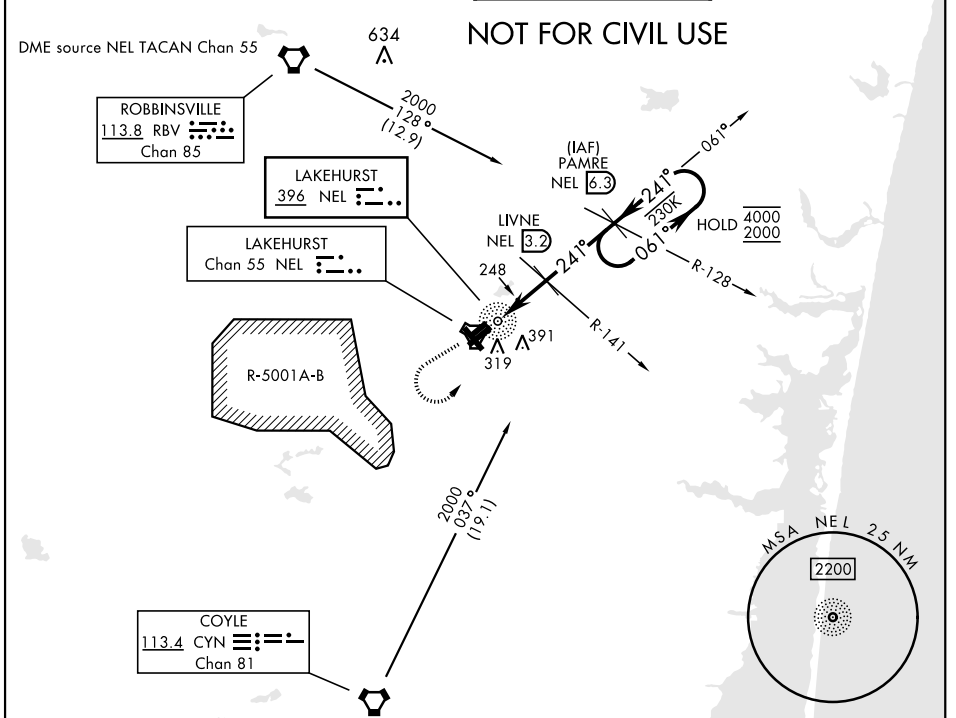
(JOINT BASE MC GUIRE DIX LAKEHURST) (KNEL)

**V** \* When ALS inop, increase, CAT AB vis to 1 mile, CAT CD vis to 1¼ miles.



MISSED APPROACH: Climb to 800, then climbing left turn to 2000 and intercept NEL NDB 061° bearing to PAMRE and hold, continue climb in hold to 2000.

ATIS ★ <b>276.525</b>	MC GUIRE APP CON <b>126.475 363.8</b>	TOWER ★ <b>127.775 360.2</b>	GND CON <b>118.375 307.375</b>
--------------------------	--	---------------------------------	-----------------------------------

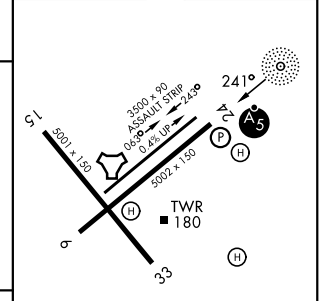
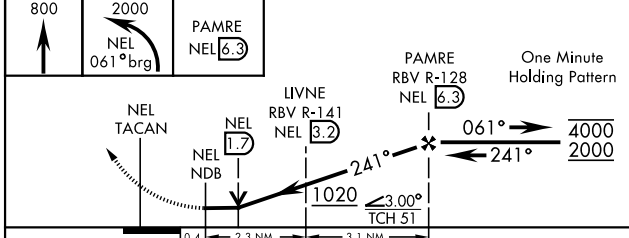


NE-2, 16 APR 2026 to 14 MAY 2026

NE-2, 16 APR 2026 to 14 MAY 2026

ELEV	101	TDZE	101
------	-----	------	-----

EMERG SAFE ALT 100 NM 4000



CATEGORY	A	B	C	D
S-24 *	540-¾	439	(500-¾)	
CIRCLING	660-1 559 (600-1)	720-1 619 (700-1)	720-1¼ 619 (700-1¼)	720-2 619 (700-2)

HIRL Rwy 6-24	
MIRL Rwy 063°-243°	
FAF to MAP 5.4 NM	
Knots	60 90 120 150 180
Min:Sec	5:24 3:36 2:42 2:10 1:48

# NDB RWY 24