

# RNAV (GPS) RWY 24

LAKEHURST MAXFIELD FLD,  
 (JOINT BASE MC GUIRE DIX LAKEHURST) (KNEL)

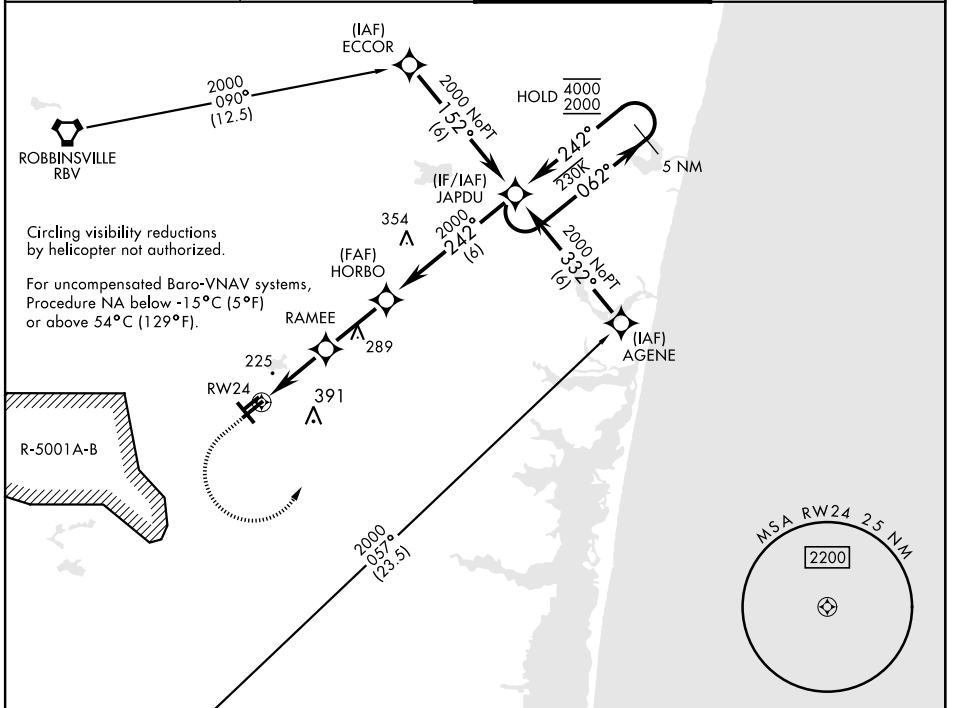
WAAS Chan <b>60342</b> <b>W24A</b>	APCH CRS <b>242°</b>	Rwy Idg <b>5002</b> TDZE <b>101</b> Arpt Elev <b>101</b>
--	-------------------------	--

AL-223 [USN]

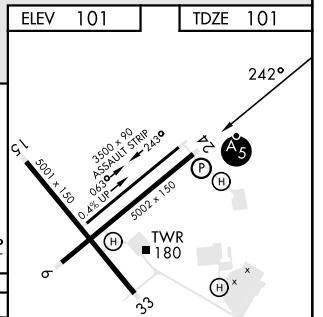
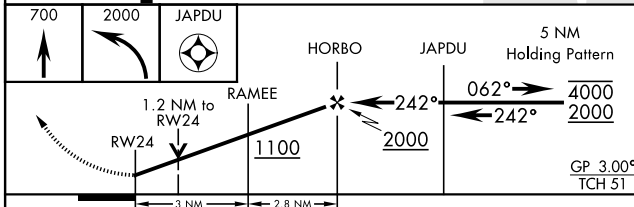
(JOINT BASE MC GUIRE DIX LAKEHURST) (KNEL)

RNP APCH * When ALS inop, increase vis to ¾ mile. ** When ALS inop, increase vis to 1½ miles. *** When ALS inop, increase CAT AB vis to 1mile; CAT CD vis to 1¼ miles.	MALSR 	MISSED APPROACH: Climb to 700 then climbing left turn to 2000 direct JAPDU and hold.
---	-----------	--

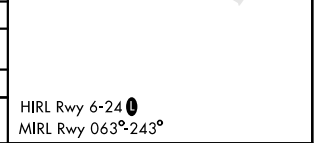
ATIS★ <b>276.525</b>	MC GUIRE APP CON <b>126.475 363.8</b>	TOWER★ <b>127.775 360.2</b>	GND CON <b>118.375 307.375</b>
-------------------------	--	--------------------------------	-----------------------------------



ELEV 101	TDZE 101
----------	----------



CATEGORY	A	B	C	D
LPV DA *		301-½	200 (200-½)	
LNAV/VNAV DA **		503-¾	402 (500-¾)	
LNAV MDA***	540 ½	439 (500-½)	540-¾	359 (400-¾)
CIRCLING	660-1	720-1	720-1¾	720-2
	559 (600-1)	619 (700-1)	619 (700-1¾)	619 (700-2)



NE-2, 16 APR 2026 to 14 MAY 2026

NE-2, 16 APR 2026 to 14 MAY 2026