

LOC I-CPQ 111.7	APP CRS 096°	Rwy Ldg 8506
		TDZE 861
		Apt Elev 861

ILS or LOC RWY 10R

CAPITAL REGION INTL (LAN)

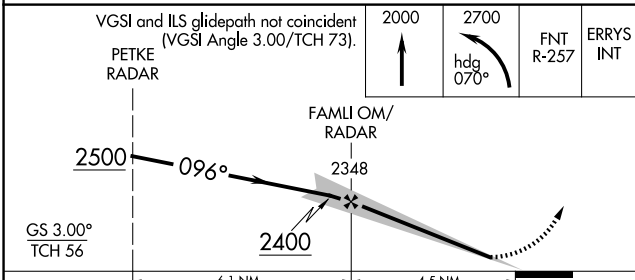
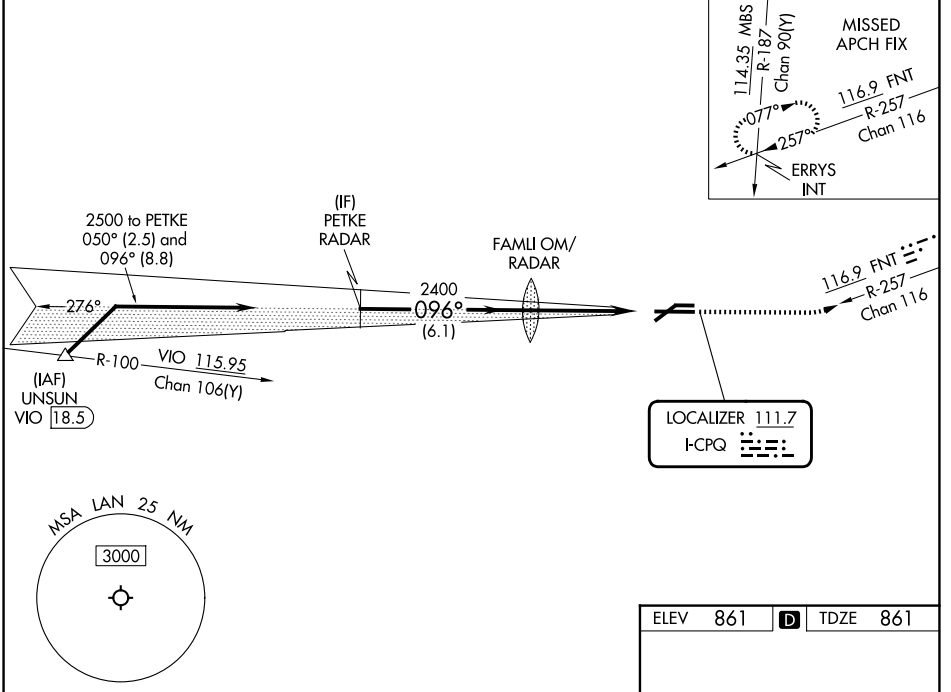
RADAR required.

▼ Rwy 10R helicopter visibility reduction below RVR 4000 NA.
 ▲ For inop ALS, increase S-ILS 10R all Cats to RVR 4500 and S-LOC 10R Cats A/B to RVR 5500 and Cats C/D to 1/2 SM.

MALSR

MISSED APPROACH: Climb to 2000 then climbing left turn to 2700 on heading 070° and on FNT VORTAC R-257 to ERRYS INT and hold.

ATIS 119.75	GREAT LAKES APP CON ★ 118.65 226.4	LANSING TOWER 119.9 240.9	GND CON 121.9
-----------------------	--	-------------------------------------	-------------------------



ELEV 861	D TDZE 861
----------	-------------------

Diagram showing the airport layout with RWY 10R, RWY 28L, RWY 6, and RWY 24. Key features include:

- RWY 10R:** 3601 X 75
- RWY 28L:** 281 X 28R
- RWY 6:** 5005 X 120
- RWY 24:** 8506 X 150
- TWR:** Tower location
- ILS/LOC:** 111.7 I-CPQ

REIL Rwy 6 and 24	HIRL Rwy 10R-28L	MIRL Rwy 6-24			
FAF to MAP 4.5 NM					
Knots	60	90	120	150	180
Min:Sec	4:30	3:00	2:15	1:48	1:30

CATEGORY	A	B	C	D
S-ILS 10R		1153/40	292 (300-3/4)	
S-LOC 10R	1340/40	479 (500-3/4)	1340/50	479 (500-1)
CIRCLING	1340-1	479 (500-1)	1600-2 739 (800-2)	1760-3 899 (900-3)

EC-1, 16 APR 2026 to 14 MAY 2026

EC-1, 16 APR 2026 to 14 MAY 2026