

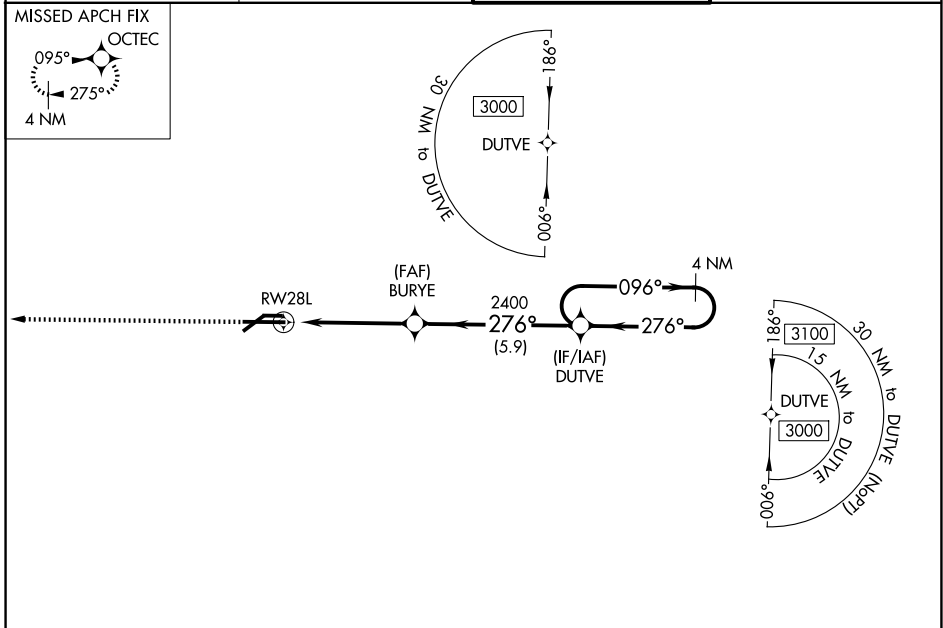
WAAS CH <b>40414</b> <b>W28A</b>	APP CRS <b>276°</b>	Rwy Ldg TDZE Apt Elev	<b>8506</b> <b>852</b> <b>861</b>
--	------------------------	-----------------------------	---

# RNAV (GPS) RWY 28L

CAPITAL REGION INTL (L.A.N)

<p>For uncompensated Baro-VNAV systems, LNAV/VNAV NA below -19°C (-2°F) or above 54°C (130°F). DME/DME RNP-0.3 NA. Circling Rwy 10L, 28R NA at night. # RVR 1800 authorized with use of FD or AP or HUD to DA.</p>	<p>MALS</p>	<p>MISSED APPROACH: Climb to 3000 direct OCTEC and hold.</p>

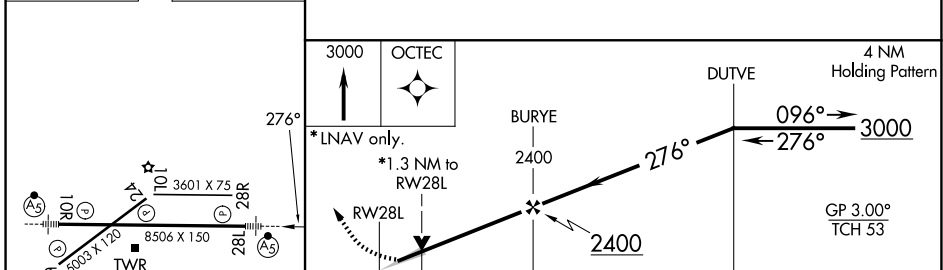
ATIS <b>119.75</b>	GREAT LAKES APP CON * <b>118.65 226.4</b>	LANSING TOWER <b>119.9 240.9</b>	GND CON <b>121.9</b>
-----------------------	--	-------------------------------------	-------------------------



EC-1, 16 APR 2026 to 14 MAY 2026

EC-1, 16 APR 2026 to 14 MAY 2026

ELEV 861	<b>D</b>	TDZE 852
----------	----------	----------



REIL Rwy 6 and 24				
HIRL Rwy 10R-28L				
MIRL Rwy 6-24				
CATEGORY	A	B	C	D
LPV DA #		1052/24	200 (200-½)	
LNAV/VNAV DA		1174/28	322 (400-⅝)	
LNAV MDA	1300/24	448 (500-½)	1300/45	448 (500-⅞)
CIRCLING	1380-1	519 (600-1)	1600-2 739 (800-2)	1760-3 899 (900-3)