

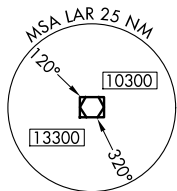
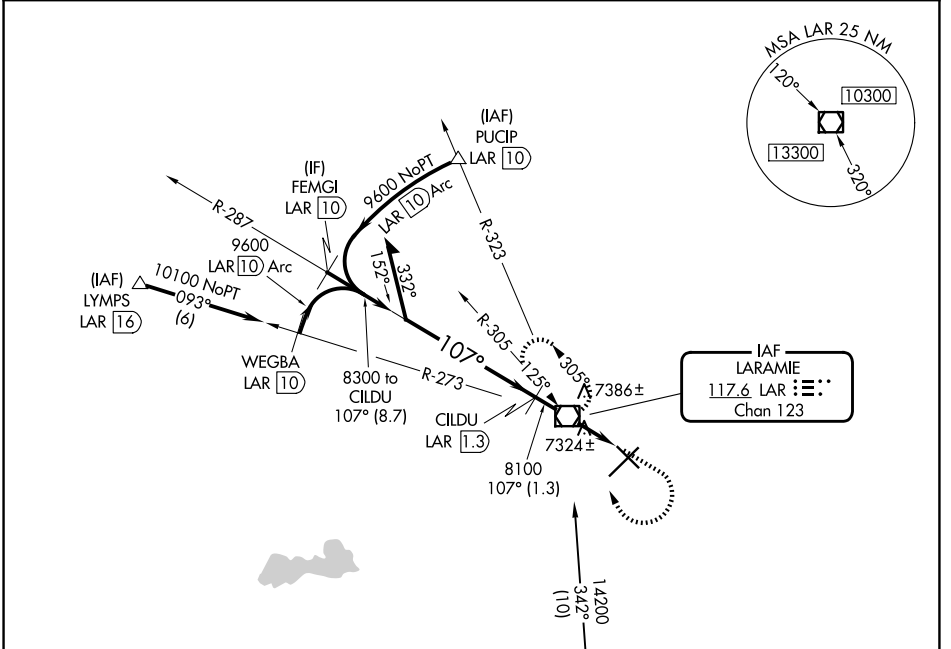
VOR/DME LAR <b>117.6</b> Chan 123	APP CRS <b>107°</b>	Rwy Ldg TDZE <b>6301</b> <b>7275</b> Apt Elev <b>7284</b>
---	------------------------	---

# VOR/DME RWY 12

LARAMIE RGNL (L.A.R.)

**MISSED APPROACH:** Climb to 7700 then climbing right turn to 9600 direct LAR VOR/DME and hold, continue climb-in-hold to 9600.

ASOS <b>135.475</b>	DENVER CENTER <b>125.9 284.7</b>	UNICOM <b>123.05 (CTAF)</b>
------------------------	-------------------------------------	--------------------------------

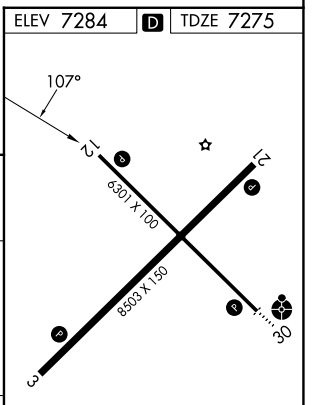
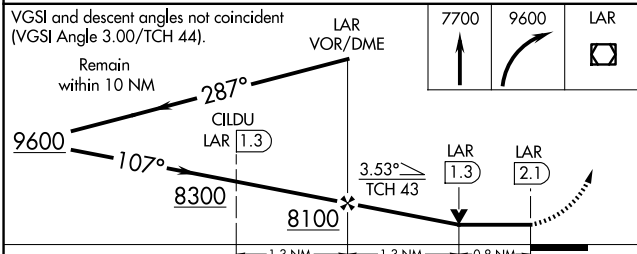


IAF  
LARAMIE  
**117.6 LAR**  
Chan 123

NW-1, 16 APR 2026 to 14 MAY 2026

NW-1, 16 APR 2026 to 14 MAY 2026

ELEV 7284	TDZE 7275
-----------	-----------



CATEGORY	A	B	C	D
S-12	7580-1 305 (300-1)			
CIRCLING	7660-1 376 (400-1)	7760-1 476 (500-1)	7880-1½ 596 (600-1½)	7920-2 636 (700-2)

REIL Rwy 3, 12 and 21  
MIRL Rwy 3-21 and 12-30