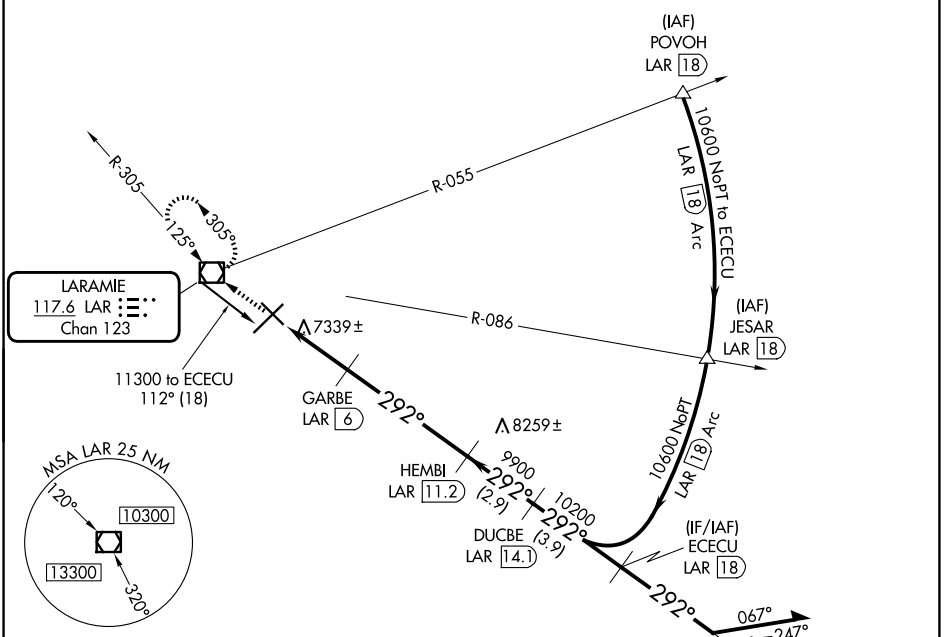


| | | |
|---|------------------------|---|
| VOR/DME LAR 117.6 Chan 123 | APP CRS 292° | Rwy Ldg TDZE 6301 7278 Apt Elev 7284 |
|---|------------------------|---|

VOR/DME RWY 30

LARAMIE RGNL (L.A.R.)

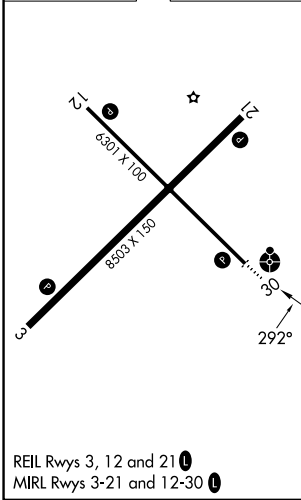
| | | |
|------------------------|-------------------------------------|---|
| ODALS | | MISSED APPROACH: Climb to 9600 direct LAR VOR/DME and hold, continue climb-in-hold to 9600. |
| ASOS 135.475 | DENVER CENTER 125.9 284.7 | UNICOM 123.05 (CTAF) 0 |



NW-1, 16 APR 2026 to 14 MAY 2026

NW-1, 16 APR 2026 to 14 MAY 2026

| | | |
|-----------|---|-----------|
| ELEV 7284 | D | TDZE 7278 |
|-----------|---|-----------|



| | | | |
|---|--------------------|--------------------------------|---|
| 9600 | LAR | ECECU LAR 18 | Remain within 10 NM |
| ↑ | ☐ | | |
| GARBE LAR 6 HEMBI LAR 11.2 DUCBE LAR 14.1 ECECU LAR 18 | LAR 4 LAR 3.1 | 10600 10200 9900 8220 | 112° 292° 292° 10600 |
| 0.9 | 2 NM | 5.2 NM | 2.9 NM |
| 3.9 NM | | | |
| CATEGORY | A | B | C |
| S-30 | 7600-¾ 322 (400-¾) | | 7600-1 322 (400-1) |
| CIRCLING | 7660-1 376 (400-1) | 7760-1 476 (500-1) | 7880-1½ 596 (600-1½) 7920-2 636 (700-2) |