


WAAS Ch 82599 W18A	APP CRS 178°	Rwy Ldg 8743 TDZE 504 Apt Elev 508
--	------------------------	---

RNAV (GPS) RWY 18R

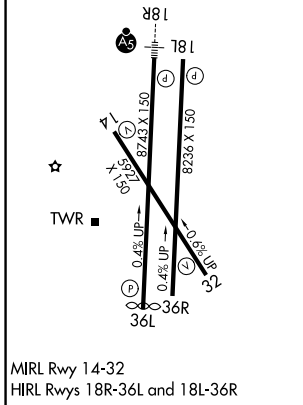
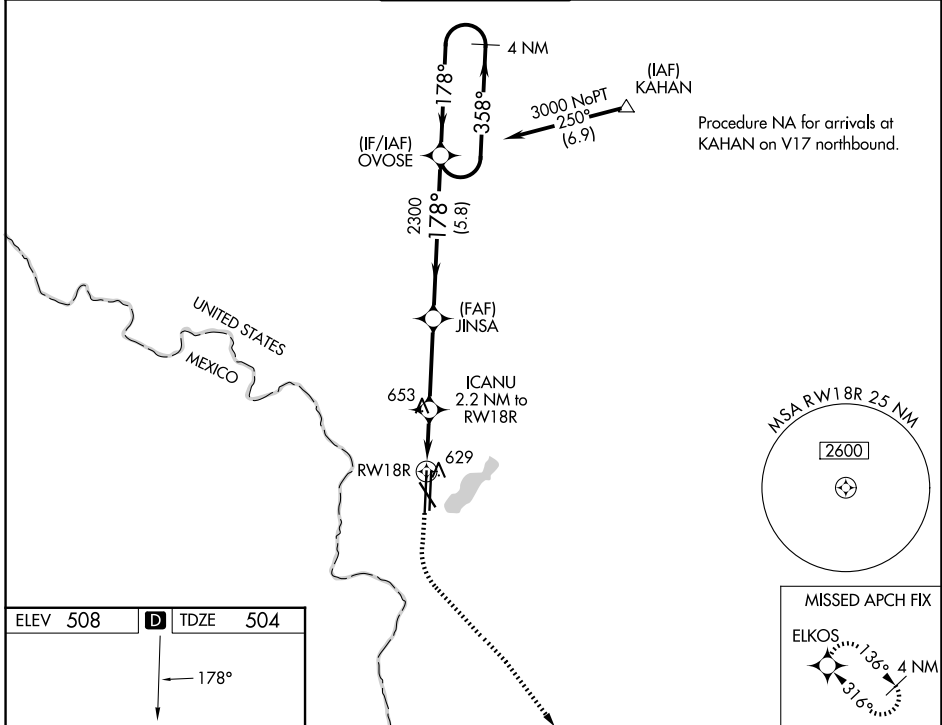
LAREDO INTL (L.R.D)

▽ For uncompensated Baro-VNAV systems, LNAV/VNAV NA below 1°C (34°F) or above 54°C (130°F). Circling NA West of Rwy 14 and 36L. DME/DME RNP-0.3 NA.
▲ For inop ALS, increase LPV Cat E visibility to ¾ SM, LNAV/VNAV all Cats visibility to 7/8 SM, and LNAV Cats C/D/E to 1 SM.

MALSR 

MISSED APPROACH:
Climb to 1000 then climbing left turn to 2500 direct ELKOS and hold.

ATIS 125.775	HOUSTON CENTER 127.8 307.2	LAREDO TOWER* 120.1(CTAF) 257.9	GND CON 121.8	UNICOM 122.95
------------------------	--------------------------------------	---	-------------------------	-------------------------



1000	2500	ELKOS	VGSI and RNAV glidepath not coincident (VGSI Angle 3.00/TCH 50).	4 NM Holding Pattern
*LNAV only		ICANU 2.2 NM to RWY 18R	JINSA 2300	358° → 3000
RWY 18R		*1 NM to RWY 18R	*1260	← 178°
1 NM		1.2	3.3 NM	5.8 NM
GP 3.00°		TCH 57		

CATEGORY	A	B	C	D	E
LPV DA	704-½ 200 (200-½)				
LNAV/VNAV DA	810-½ 306 (400-½)				
LNAV MDA	880-½ 376 (400-½)		880-5/8 376 (400-5/8)		
CIRCLING	940-1 432 (500-1)	980-1 472 (500-1)	1100-1½ 592 (600-1½)	1200-2¼ 692 (700-2¼)	1200-2½ 692 (700-2½)