

LAS VEGAS, NEVADA

# HI-ILS or LOC Z RWY 21L

LOC I-DIQ <b>109.1</b>	APCH CRS <b>209°</b>	Rwy ldg 21L <b>10,051</b>	21R <b>10,120</b>
		TDZE <b>1865</b>	<b>1869</b>
		Arpt Elev <b>1869</b>	

(USAF)

NELLIS AFB (KLSV)

DME or RADAR required.

- \* When ALS inop, increase RVR to 40, vis to 3/4 mile.
- \*\* When ALS inop, increase vis to 1 3/8 miles.
- \*\*\* Circling not authorized SE of Rwy 3R-21L.



MISSED APPROACH: Climb to 15,000, intercept LSV TACAN R-210 to 2.5 DME (ROCKX), then climbing right turn heading 043° to intercept LSV R-358 to ARCOE and hold, climb in hold to 15,000. Missed approach not for civil use.

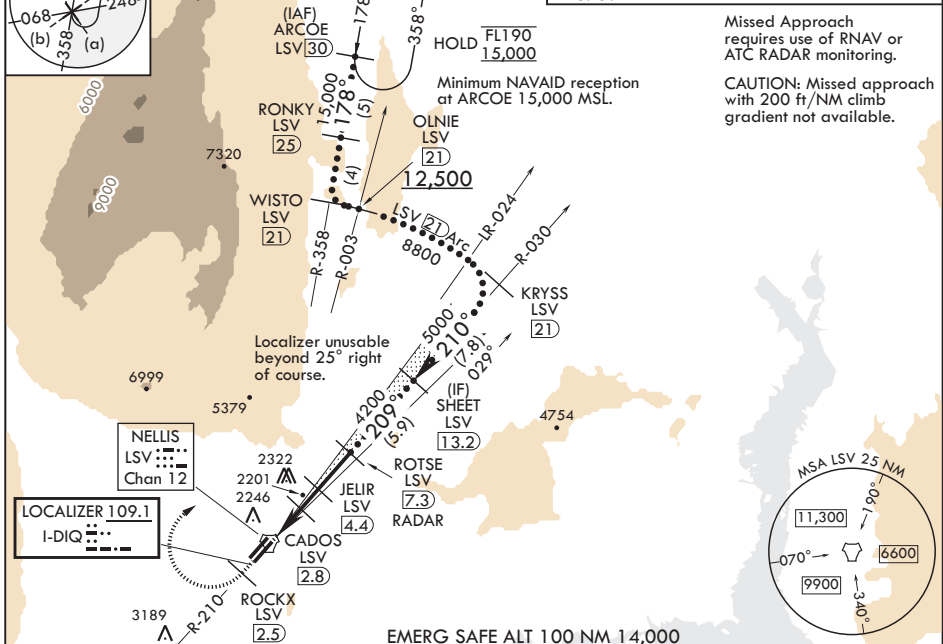
ATIS <b>270.1</b>	APP CON <b>124.95 273.55</b>	TOWER <b>132.55 327.0</b>	GND CON <b>121.8 275.8</b>	CLNC DEL* <b>120.9 289.4</b>
----------------------	---------------------------------	------------------------------	-------------------------------	---------------------------------



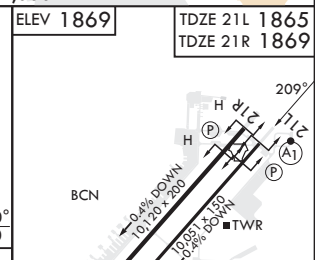
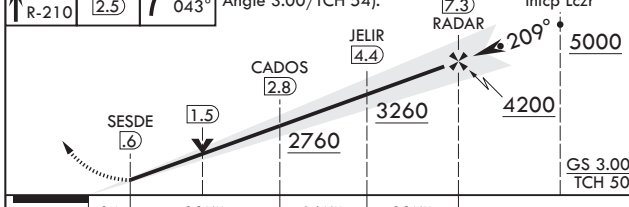
Knots	60	120	180	240	300	360
V/V(fpm)	372	744	1116	1488	1860	2232
Min climb of 372 ft/NM to 9400 - Controlling Obst 5739						

Missed Approach requires use of RNAV or ATC RADAR monitoring.

CAUTION: Missed approach with 200 ft/NM climb gradient not available.



15,000 LSV	ROCKX LSV R-210 [2.5]	VGSI and ILS glidepath not coincident (VGSI Angle 3.00/TCH 54).	ROTSE RADAR [7.3]	SHEET [13.2] Intcp Lczr	ELEV 1869	TDZE 21L 1865 TDZE 21R 1869
------------	-----------------------	---	-------------------	-------------------------	-----------	--------------------------------



0.4	2.2 NM	1.6 NM	2.9 NM
CATEGORY	C	D	E
S-ILS 21L*	2065/24	200	(200-½)
S-LOC 21L**	2360/50	495	(500-1)
SIDESTEP 21R	2380-1 3/8	511	(600-1 3/8)
CIRCLING***	2560-2 691 (700-2)	2840-3 971 (1000-3)	3140-3 1271 (1300-3)

FAF to MAP 6.7 NM					
Knots	120	140	160	180	200
Min:Sec	3:21	2:52	2:31	2:14	2:01

LAS VEGAS, NEVADA

36°14'N - 115°02'W

NELLIS AFB (KLSV)

Amdt 10 10JUL25

# HI-ILS or LOC Z RWY 21L

SW-4, 16 APR 2026 to 14 MAY 2026

SW-4, 16 APR 2026 to 14 MAY 2026