


# HI-TACAN Z RWY 21L

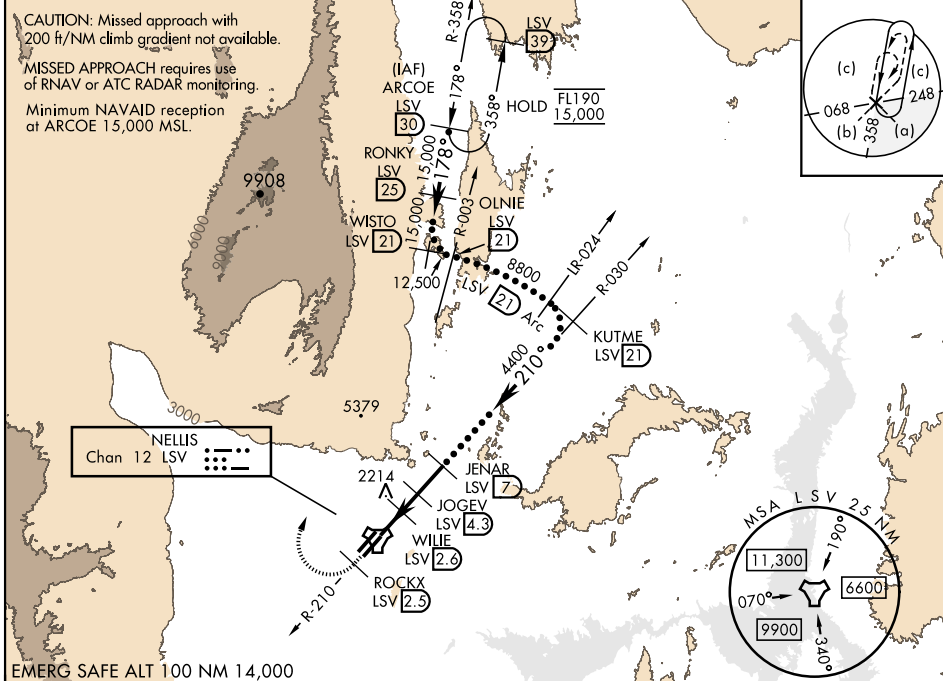
TACAN LSV Chan <b>12</b>	APCH CRS <b>210°</b>	Rwy ldg 21L <b>10,051</b> TDZE <b>1865</b> Arprt Elev <b>1869</b>	Rwy ldg 21R <b>10,120</b> TDZE <b>1869</b>	AL-227 [USAF]	NELLIS AFB (KLSV)
-----------------------------	-------------------------	---	---	---------------	-------------------

**∇** \* When ALS inop, increase CAT CDE vis to 1½ miles.  
**\*\*** Circling not authorized SE of Rwy 3R-21L.

ALSF-1  

 MISSED APPROACH: Climb to 15,000, intercept LSV TACAN R-210 to 2.5 DME (ROCKX), then climbing right turn heading 043° to intercept LSV R-358 to ARCOE and hold, climb in hold to 15,000. Missed approach not for civil use.

ATIS <b>270.1</b>	APP CON <b>124.95 273.55</b>	TOWER <b>132.55 327.0</b>	GND CON <b>121.8 275.8</b>	CLNC DEL <b>120.9 289.4</b>
----------------------	---------------------------------	------------------------------	-------------------------------	--------------------------------

CAUTION: Missed approach with 200 ft/NM climb gradient not available.  
 MISSED APPROACH requires use of RNAV or ATC RADAR monitoring.  
 Minimum NAVAID reception at ARCOE 15,000 MSL.

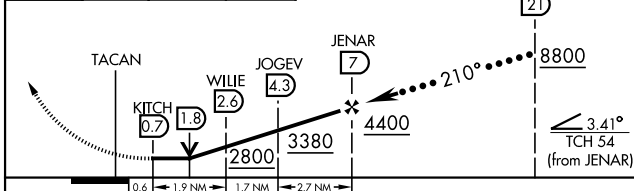


EMERG SAFE ALT 100 NM 14,000

Knots	60	120	180	240	300	360
V/V(fpm)	364	728	1092	1456	1820	2184

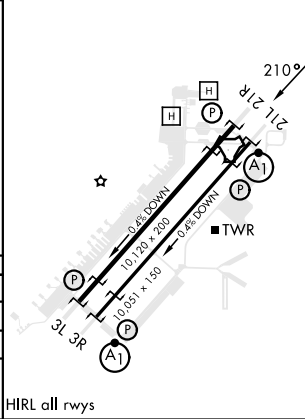
Min climb of 364 ft/NM to 9400 - Controlling Obstacle 5739

ROCKX LSV R-210 15,000  
 ARCOE R-358 30  
 VGS1 and descent angles not coincident (VGS1 Angle 3.00/TCH 54).



CATEGORY	C	D	E
S-21L *	2440-1¼	575 (600-1¼)	
SIDESTEP 21R	2440-1⅝	571 (600-1⅝)	
CIRCLING **	2560-2 691 (700-2)	2840-3 971 (1000-3)	3140-3 1271 (1300-3)

ELEV 1869	TDZE 21L 1865
	TDZE 21R 1869



# HI-TACAN Z RWY 21L

SW-4, 16 APR 2026 to 14 MAY 2026

SW-4, 16 APR 2026 to 14 MAY 2026

HIRL all rwys