

LOC Y RWY 21L

LOC I-DIQ 109.1	APCH CRS 209°	Rwy Ldg 21L 10,051 TDZE 1865 Arpt Elev 1869	Rwy Ldg 21R 10,120 TDZE 1869
---------------------------	-------------------------	--	--

[USAF]

NELLIS AFB (KLSV)

RADAR or DME required. RNAV or RADAR required for missed apch.



MISSED APPROACH: Climb to 8000, intercept the LAS VORTAC R-018 to 10.3 DME (IREEN), then to LAS and hold, continue climb in hold to 8000.

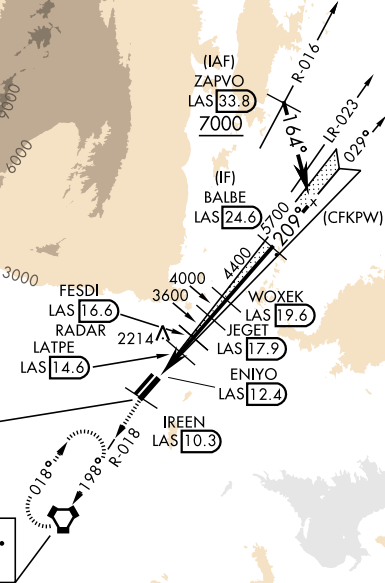
- * When ALS inop, increase vis to 1 1/2 miles.
- ** Circling not authorized SE of Rwy 3R-21L.

ATIS 270.1	APP CON 124.95 273.55	TOWER 132.55 327.0	GND CON 121.8 275.8	CLNC DEL 120.9 289.4
----------------------	---------------------------------	------------------------------	-------------------------------	--------------------------------

Knots	60	120	180	240	300	360
V/V(fpm)	450	900	1350	1800	2250	2700

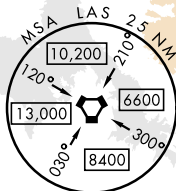
ATC climb of 450 ft/NM to 8000

FOR USE BY NELLIS AFB ASSIGNED AIRCRAFT ONLY

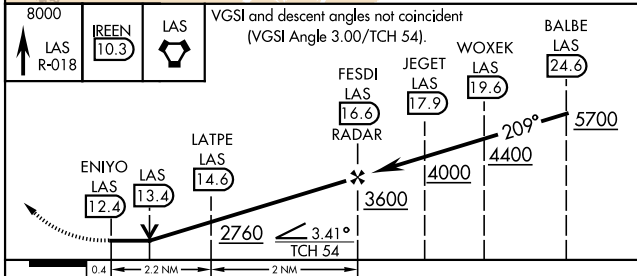


LAS VEGAS VORTAC DME not usable for missed approach holding.

Localizer unusable beyond 25° right of course.

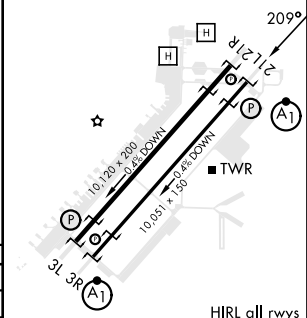


EMERG SAFE ALT 100 NM 14,000



VGSI and descent angles not coincident (VGSI Angle 3.00/TCH 54).

ELEV 1869	TDZE 21L 1865
	TDZE 21R 1869



CATEGORY	C	D	E
S-21L *	2360/50	495 (500-1)	
SIDESTEP 21R	2360-1 3/8	491 (500-1 3/8)	
CIRCLING **	2560-2	2840-3	3140-3
	691 (700-2)	971 (1000-3)	1271 (1300-3)

FAF to MAP 4.2 NM					
Knots	60	90	120	150	180
Min:Sec	4:12	2:48	2:06	1:41	1:24

LOC Y RWY 21L

SW-4, 16 APR 2026 to 14 MAY 2026

SW-4, 16 APR 2026 to 14 MAY 2026