

FORT SILL, OKLAHOMA

# VOR RWY 18

VOR/DME LAW <b>116.85</b> Chan <b>115(Y)</b>	APCH CRS <b>174°</b>	Rwy ldg <b>5002</b> TDZE <b>1188</b> Arprt Elev <b>1188</b>
--	-------------------------	---

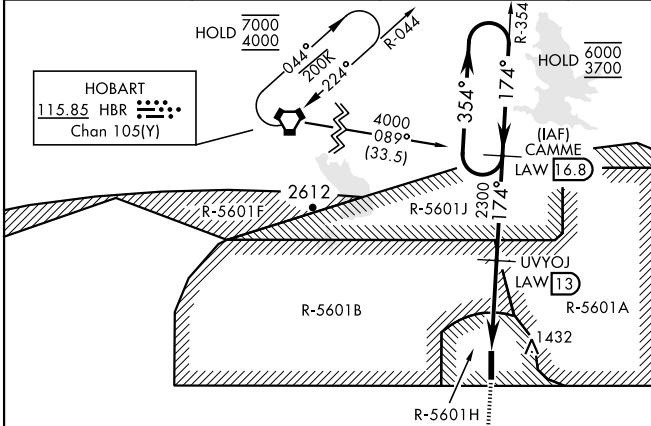
[USA]

HENRY POST AAF (KFSI)

DME required

MISSED APPROACH: Climb straight ahead to 3000 direct to LAW VOR/DME and hold.

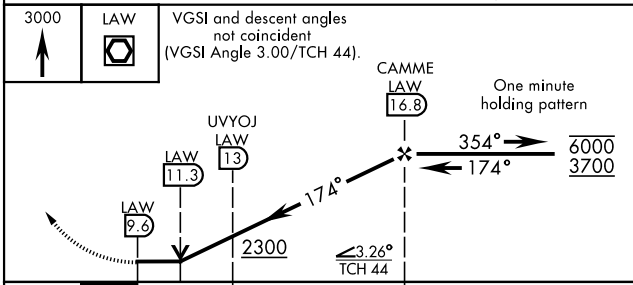
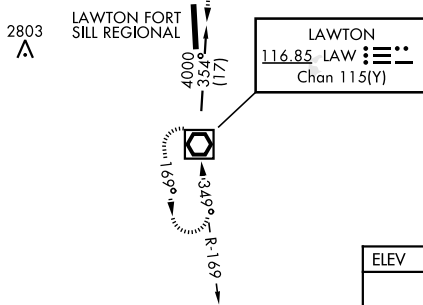
ATIS <b>135.425 354.025</b>	FORT SILL APP/DEP CON <b>120.55 322.4</b>	CTAF <b>124.950</b>	CLNC DEL <b>121.7 279.575</b>	ASR
--------------------------------	--	------------------------	----------------------------------	-----



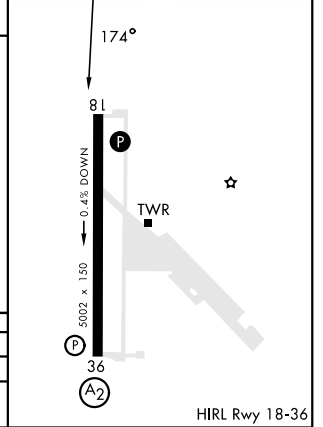
RADAR required for holding above 6000, or speeds greater than 175 KIAS.

Procedure not authorized for arrival on HBR VORTAC airway R-029 CW R-150 without holding at HOBART. ATC clearance required.

When local altimeter setting not received, use Lawton-Fort Sill RGNL altimeter setting.



ELEV	1188	TDZE	1188
------	------	------	------



CATEGORY	A	B	C	D
S-18	1760/55 572 (600-1)		1760-1½ 572 (600-1½)	
CIRCLING	1760-1 572 (600-1)		1820-1¾ 632 (700-1¾)	1920-2¼ 732 (800-2¼)

FORT SILL, OKLAHOMA  
Amdt 3 31OCT24

34° 39' N-98° 24' W

HENRY POST AAF (KFSI)

# VOR RWY 18

SC-1, 16 APR 2026 to 14 MAY 2026

SC-1, 16 APR 2026 to 14 MAY 2026